



**THE CRESCENT, SEAGER PLACE,
GREENWICH SE10**





This fabulous three bedroom, two bathroom seventh floor apartment is located just yards from Deptford Bridge DLR, representing a commuters dream.

The property is bright and spacious with a large, private balcony, open plan lounge, dining and fitted kitchen, two modern, contemporary bathrooms as well as ample storage and three bedrooms, one of which could also be used as a home office.

The property is decorated in neutral tones throughout and is available with no onward chain, early viewings are highly recommended.

- 3 Bedrooms
- 2 Bathrooms (en-suite)
- Large balcony
- 7th Floor modern apartment
- Close to DLR and mainline stations
- No onward chain
- EPC: B

PRICE

OIEO £500,000

GROSS INTERNAL AREA

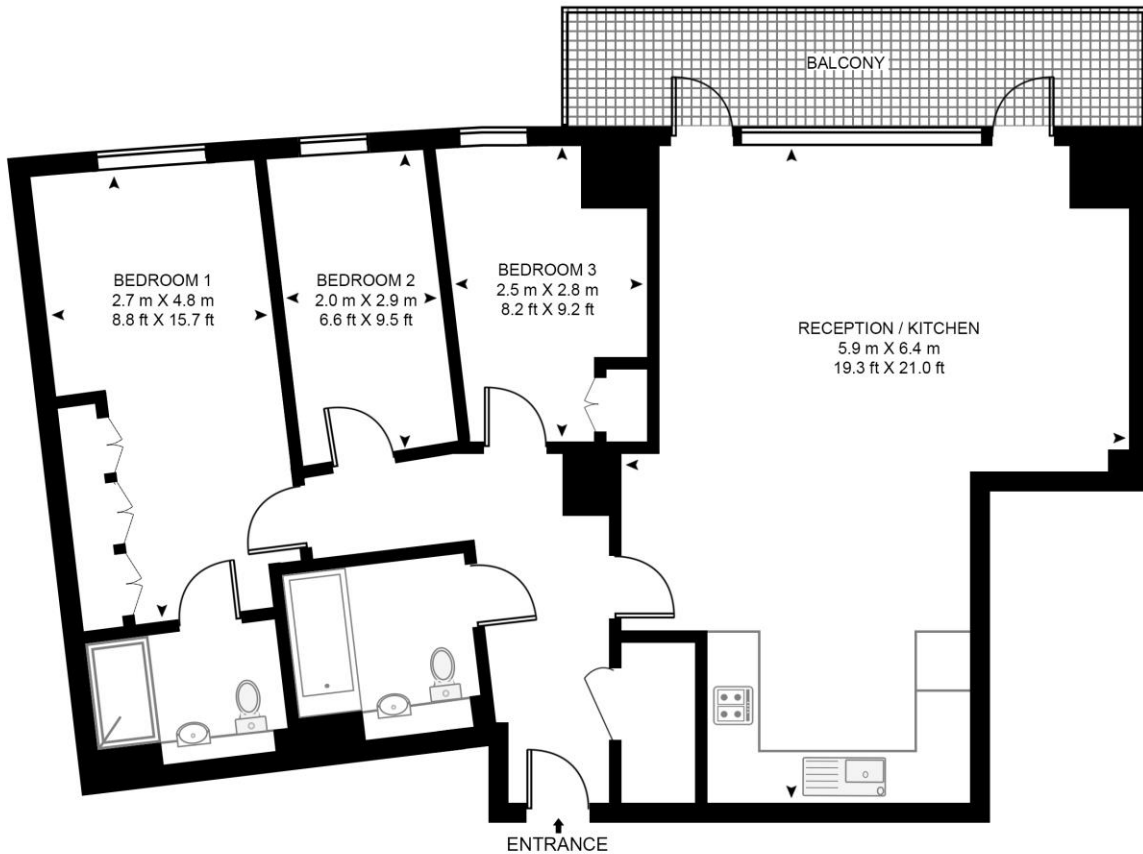
898 sq ft (83.4 sq m)

LOCAL AUTHORITY

London borough of Lewisham

THE CRESCENT, SEAGER PLACE

APPROXIMATE GROSS INTERNAL FLOOR AREA 898 SQ.FT (83.4 SQ.M)



SEVENTH FLOOR

HDVA

This floor plan has been defined by the RICS Code of Measurement. This floor plan and all others are for approximate representative purposes only and upon usage is agreed to as such by the client.

WWW: hdvirtualart.com | TEL: 0203.974.1567 | EMAIL: info@hdvirtualart.com

22 College Approach
Greenwich
London
SE10 9HY

These particulars are for general information only and do not constitute any part of an offer or contract. All statements contained therein are made without responsibility on the part of the vendors or lessors and are not to be relied upon as statement or representation of fact. Intending purchasers or lessees must satisfy themselves, by inspection, or otherwise, as to the correctness of each of the statements or dimensions contained in these particulars..