



## 36 Wharf Road, London N1

Guide price £1,100,000 Leasehold





# Description

A rarely available 3 bedroom apartment in Cooper Building on Wharf Road, N1, well situated for the City of London and Angel.

This modern 3 bedroom apartment on the 9th floor is set over approx. 883 sq ft comprises of a spacious reception, fully fitted kitchen with integrated appliances, large balcony, master bedroom with built-in wardrobes and en suite, second double bedroom with fitted wardrobes, further double bedroom, contemporary bathroom, wood flooring and excellent storage space.

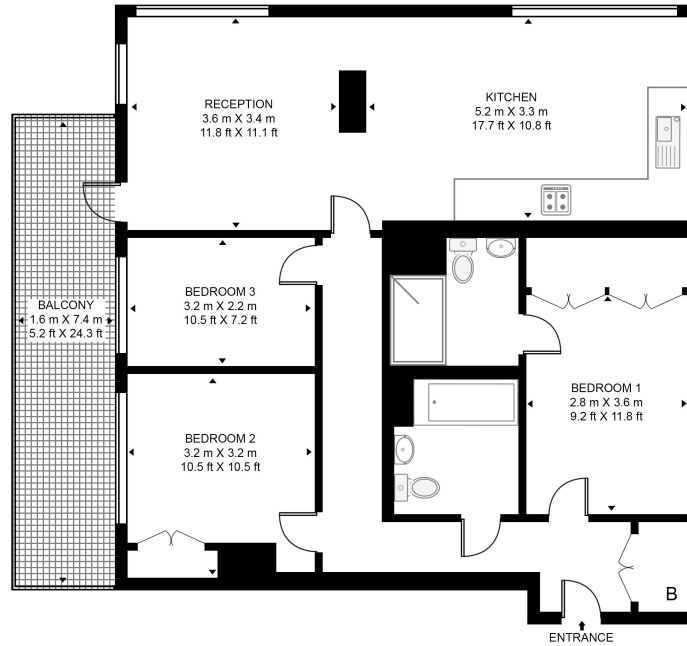
The development benefits from 24 hour concierge and communal gardens which overlook the canal. Cooper Building is approximately 0.5 miles for Old Street Station and conveniently located for the City, Shoreditch and Angel / Upper Street.

- 3 Bedrooms
- 2 Bathrooms
- 9th Floor
- Balcony
- Communal garden
- 24 Hour concierge
- 0.5 miles from Old Street Station
- Approx. 883 sq ft (82 sq m)
- EPC: B



## COOPER BUILDING

APPROXIMATE GROSS INTERNAL FLOOR AREA 883 SQ.FT (82 SQ.M)



NINTH FLOOR



This floor plan has been defined by the RICS Code of Measurement. This floor plan and all others are for approximate representative purposes only and upon usage is agreed to as such by the client.  
WWW: [hdvirtualart.com](http://hdvirtualart.com) | TEL: 0203.974.1567 | EMAIL: [info@hdvirtualart.com](mailto:info@hdvirtualart.com)

City  
25 Walbrook The Walbrook  
Building,  
London EC4N 8AF  
+4420 7337 4000

*Urban living, your way.*

[jll.co.uk/residential](http://jll.co.uk/residential)

© 2019 Jones Lang LaSalle IP, Inc. All rights reserved. All information contained herein is from sources deemed reliable; however, no representation or warranty is made to the accuracy thereof.

