

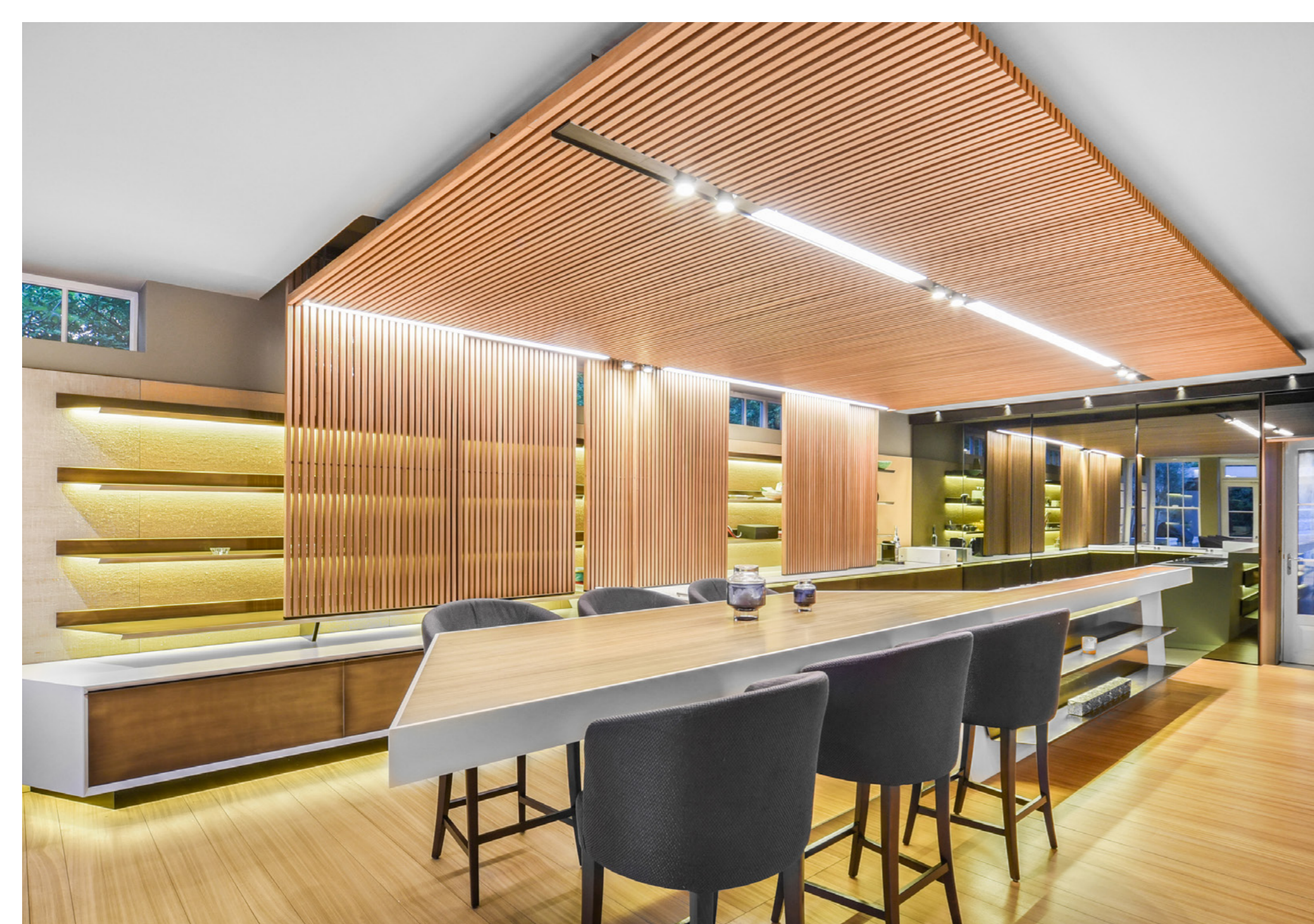


NEW
LODGE
SW6

NEW LODGE · BROOMHOUSE LANE SW6

A substantial and unique six bedroom detached house overlooking Hurlingham Park in Fulham





The house has undergone extensive refurbishment and is finished to the highest of standards. Arranged over three floors, the house offers six double bedrooms all of which are en-suite, formal living room with fireplace, generous sized office room with fireplace, very large open plan kitchen / dining / family room leading to the private opulent courtyard garden. Other benefits include heated swimming pool, gym, sauna and steam room, cinema, further dining room, staff entrance, CCTV and top of the range alarm system. There is also a gated driveway with space for two cars.





- Detached house
- Six double en-suite bedrooms
- Three living rooms
- Cinema, pool, gym
- Private spacious courtyard garden

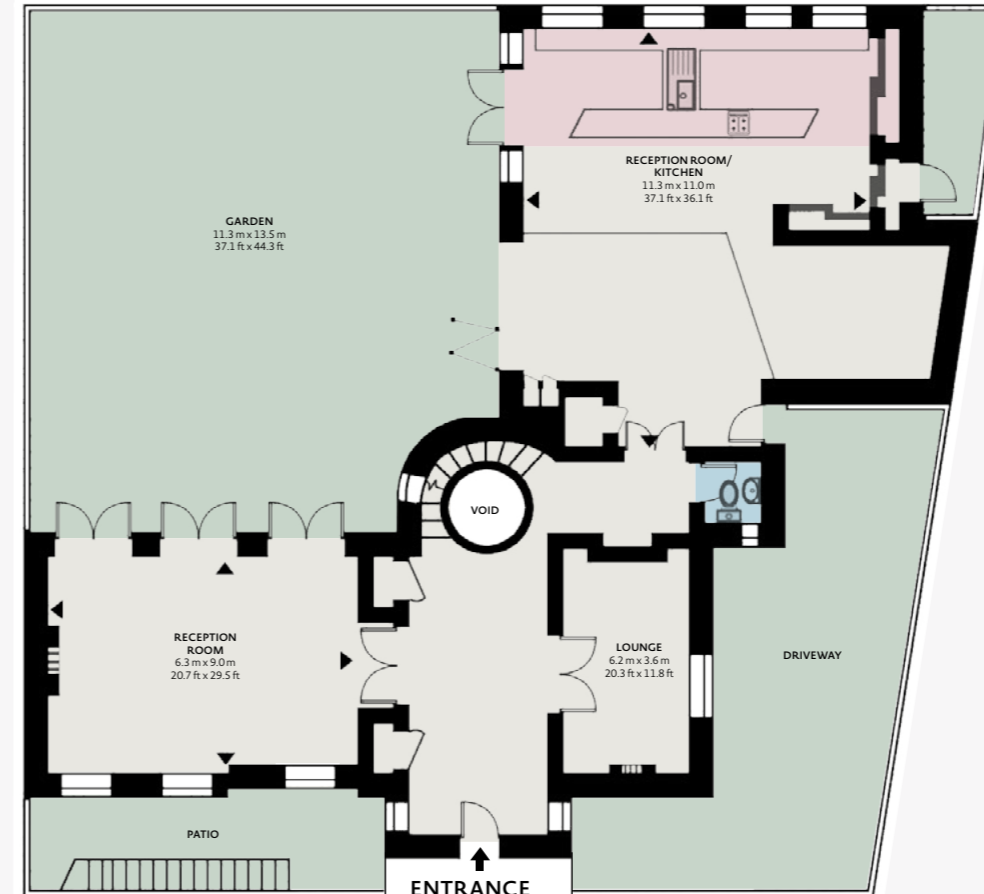
- Gated driveway for two cars
- Views over Hurlingham Park
- Staff quarters with own entrance
- Approx. 9,559 sq ft / 888 sq m
- EPC: C

FREEHOLD
£15,000,000
LONDON BOROUGH
OF HAMMERSMITH
& FULHAM

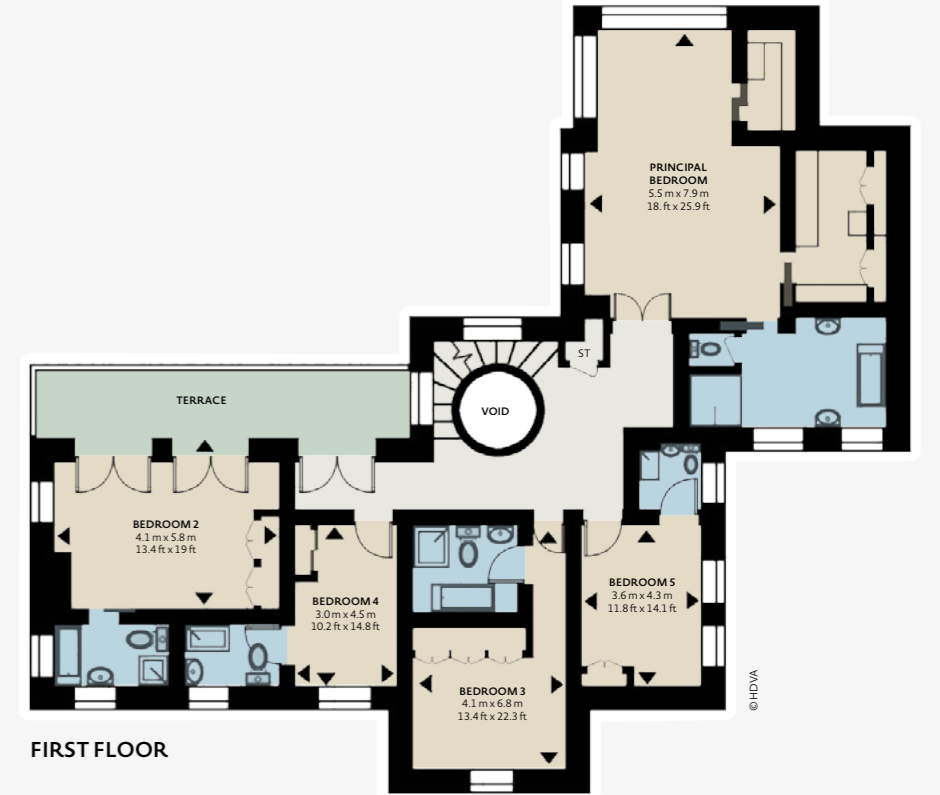




LOWER GROUND FLOOR



GROUND FLOOR



FIRST FLOOR



Approximate Gross
Internal Floor Area
9,524 sqft
884.4 sqm



JLL Kensington

387 Kensington High Street, London W14 9QA

020 3953 7444

jll.co.uk/residential

