



Chelsea Manor Street, London SW3

Price £395 per week - Unfurnished





Description

A modern and spacious studio apartment in this portered building just off the King's Road and close to Sloane Square. The property comprises large studio room with built in wardrobes, fully fitted kitchen and modern bathroom. Wood floors, heating and hot water included and portorage make this property very attractive to all Tenants. Furnished in modern neutral tones throughout.

As well as paying the rent, you may also be required to make permitted payments. Please visit jll.co.uk/fees for details of fees which may be payable when renting a property. If your tenancy does not qualify as an AST, additional fees may apply.

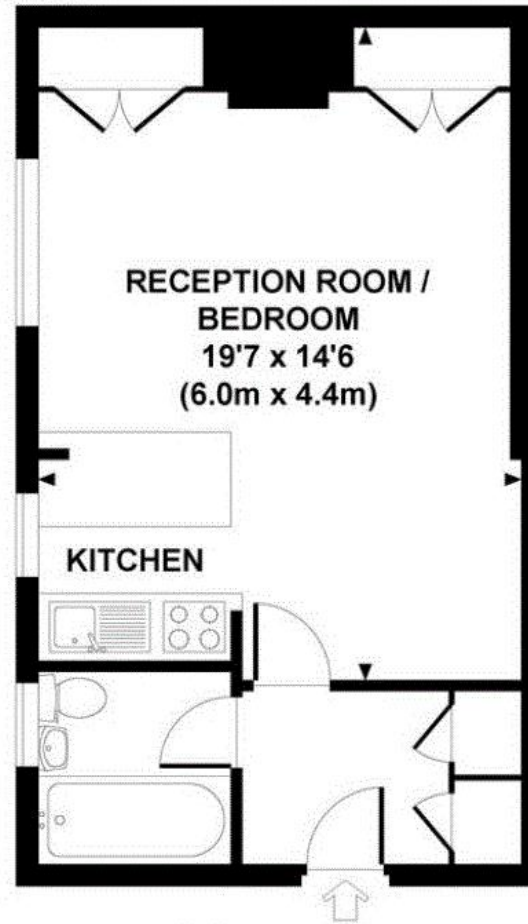
- Large studio apartment
- Kitchen
- Bathroom
- Ground floor
- Furnished
- Wooden floors
- Approx. 387 sq ft (36 sq m)
- EPC: D



Floorplan

sq ft | sq m

Approx. gross internal area
360 Sq Ft. / 33.5 Sq M.



GROUND FLOOR

Chelsea
2 Cale Street,
London SW3 3QU
+4420 7399 5010
lettingschelsea@eu.jll.com

Urban living, your way.

jll.co.uk/residential

© 2019 Jones Lang LaSalle IP, Inc. All rights reserved. All information contained herein is from sources deemed reliable; however, no representation or warranty is made to the accuracy thereof.

