

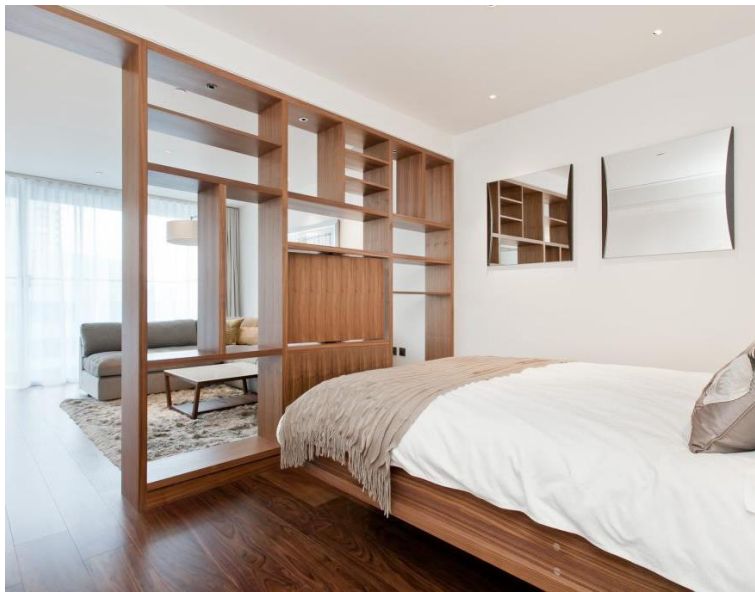


Moor Lane, London EC2Y

Price £550 per week - Furnished







Description

A luxury Galley Suite on the 18th floor of the prestigious Heron development.

This luxury apartment offers a well sized reception area with West facing balcony, partitioned sleeping area with a desk / working space, open plan, fully fitted kitchen, Walnut flooring throughout and luxury shower room. The property has a high specification with comfort cooling, iPod docking system, ceiling speakers and central control panel.

The development is located in the heart of the City of London and is within easy reach of stations such as Bank (0.5 miles) and Moorgate (0.2 miles). The Heron benefits from an on-site gym, exclusive resident's club, 24 hour security and concierge. Offered fully furnished.

We understand that cooling / heating is delivered via a communal system for which separate charges apply.

As well as paying the rent, you may also be required to make the following permitted payments. If your tenancy does not qualify as an AST, additional fees may apply. Please visit jll.co.uk/fees for details of fees which may be payable when renting a property.

- - Studio
- - 1 Bathroom
- - 18th floor
- - West facing balcony
- - 24 hour concierge
- - On-site leisure facilities including gym, pool and cinema
- - 0.2 miles from Moorgate station
- - Approx. 408 sq ft (37.9 sq m)
- - Furnished
- - EPC: C

Floorplan

408 sq ft | 38 sq m

* *Typical Galley Suite*

* *Balconies on selected units*



APPROX. GROSS INTERNAL FLOOR AREA 408 sq. ft / 38.00 sq. m

COMPLIANT WITH RICS CODE OF MEASURING PRACTICE: Floorplan is for illustrative purposes only and is not to scale. Every attempt has been made to ensure the accuracy of the floorplan shown, however all measurements, fixtures, fittings and data shown are an approximate interpretation for illustrative purposes only. Liability for errors, omissions or mis-statement through negligence or otherwise is hereby excluded.

CP CREATIVE
Property Marketing

City
25 Walbrook The Walbrook
Building,
London EC4N 8AF
+4420 7337 4000

Urban living, your way.

jll.co.uk/residential

© 2019 Jones Lang LaSalle IP, Inc. All rights reserved. All information contained herein is from sources deemed reliable; however, no representation or warranty is made to the accuracy thereof.

