



## Fetter Lane, London EC4A

Price £1,100 per week - Furnished







## Description

A stunning 2 bedroom apartment in the exclusive St. Dunstan's Court, a development from Taylor Wimpey.

This luxury 2 bedroom apartment is situated on the 3rd floor and boasts a high specification with comfort cooling to reception and bedrooms, under floor heating, 2 double bedrooms with fitted wardrobes, 2 luxury bathrooms, fitted kitchen with composite stone worktops and Siemens appliances, spacious reception and 3 balconies. The development boasts 24 hour concierge and a communal club area.

St. Dunstan's Court is situated on the border of EC4 and WC2, on Fetter Lane between Holborn and Fleet Street, and moments from Strand. This central location is walking distance to the heart of The City, as well as West End attractions such as Leicester Square and Covent Garden.

We understand that heating, hot water and cooling is delivered via a communal system for which separate charges apply.

Rent is payable on a monthly basis and you may be required to pay more than a month's rent in advance, depending on your circumstances. You will be required to pay a 1 week holding de

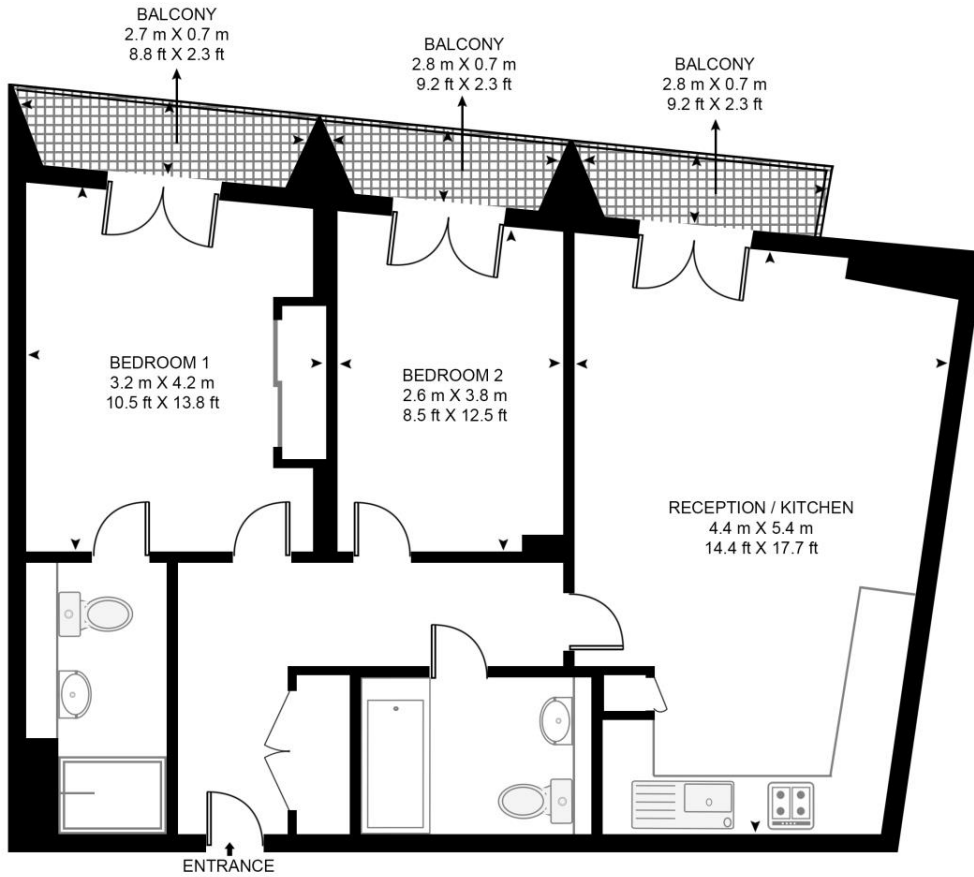
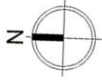
- 2 Bedrooms
- 2 Bathrooms
- 3 balconies
- Fitted kitchen with Siemens appliances
- 24 hour concierge
- 0.3 miles from Chancery Lane Station
- Approx. 750 sq ft (69.7 sq m)
- Furnished
- EPC: B
- Council Tax Band: F

# Floorplan

750 sq ft | 70 sq m

## ST DUNSTAN HOUSE, 133 FETTER LANE

APPROXIMATE GROSS INTERNAL FLOOR AREA 750 SQ.FT (69.7 SQ.M)



### THIRD FLOOR

**HDVA**

This floor plan has been defined by the RICS Code of Measurement. This floor plan and all others are for approximate representative purposes only and upon usage is agreed to as such by the client.

WWW: [hdvirtualart.com](http://hdvirtualart.com) | TEL: 0203.974.1567 | EMAIL: [info@hdvirtualart.com](mailto:info@hdvirtualart.com)

City  
25 Walbrook The Walbrook  
Building,  
London EC4N 8AF  
+4420 7337 4000

*Urban living, your way.*

[jll.co.uk/residential](http://jll.co.uk/residential)

© 2019 Jones Lang LaSalle IP, Inc. All rights reserved. All information contained herein is from sources deemed reliable; however, no representation or warranty is made to the accuracy thereof.

