



Millbank, London SW1P

Guide price £2,300,000 Leasehold





Description

A stunning two bedroom apartment in the brand new Millbank Quarter, 9 Millbank Residences. This spacious apartment is set over approx 1115 Sq ft and comes with one underground car parking space.

Millbank Quarter is the first phase of the highly anticipated 9 Millbank, developed by Berkley Homes. Millbank blends the deep history of the 1920s Grade II 'Imperial Chemical House' with a newly designed purpose built quarter offering exclusive, contemporary living for its residents.

The development benefits from the highest quality leisure facilities including a 24 hour concierge, a pool, spa, cinema, meeting rooms and of course a tranquil garden.

The second floor apartment comprises of a spacious open plan reception, fully fitted kitchen and dining area, master bedroom with separate dressing area and en suite bathroom, second double bedroom, luxury shower room, large balcony accessible from the lounge and both bedrooms, ample storage space.

Living in Westminster also puts you within walking distance of three Royal Parks, upscale shopping at Knightsbridge, Mayfair's Michelin-starred restaurants and the theatres of the West End. Millbank itself is a world-renowned centre of art, home of the Tate Britain gallery and Chelsea College of Art and Design.

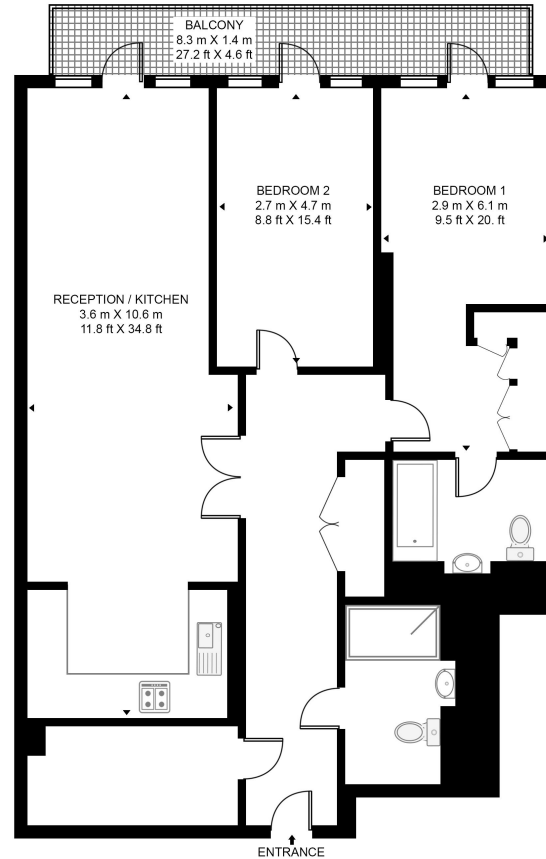
Nearby educational institutions include the historic Westminster School and Francis Holland School, Imperial College London, King's College London and the London School of Economics. Westminster Station is only a mere 0.5 mile walk with St James's Park 0.6 miles away and Pimlico station 0.7 miles.

- 2 Bedrooms
- 2 Bathrooms
- 24 Hour concierge
- Residents leisure facilities
- Includes 1 underground car parking space
- Zone 1
- Approx 1115 Sq Ft
- Leasehold
- EPC: B



MILLBANK QUARTER

APPROXIMATE GROSS INTERNAL FLOOR AREA 1115 SQ.FT (103.6 SQ.M)



SECOND FLOOR



HDVA

This floor plan has been defined by the RICS Code of Measurement. This floor plan and all others are for approximate representative purposes only and upon usage is agreed to as such by the client.
WWW: hdvirtualart.com | TEL: 0203.974.1567 | EMAIL: info@hdvirtualart.com

City
25 Walbrook The Walbrook
Building,
London EC4N 8AF
+4420 7337 4000

Urban living, your way.

jll.co.uk/residential

© 2019 Jones Lang LaSalle IP, Inc. All rights reserved. All information contained herein is from sources deemed reliable; however, no representation or warranty is made to the accuracy thereof.

