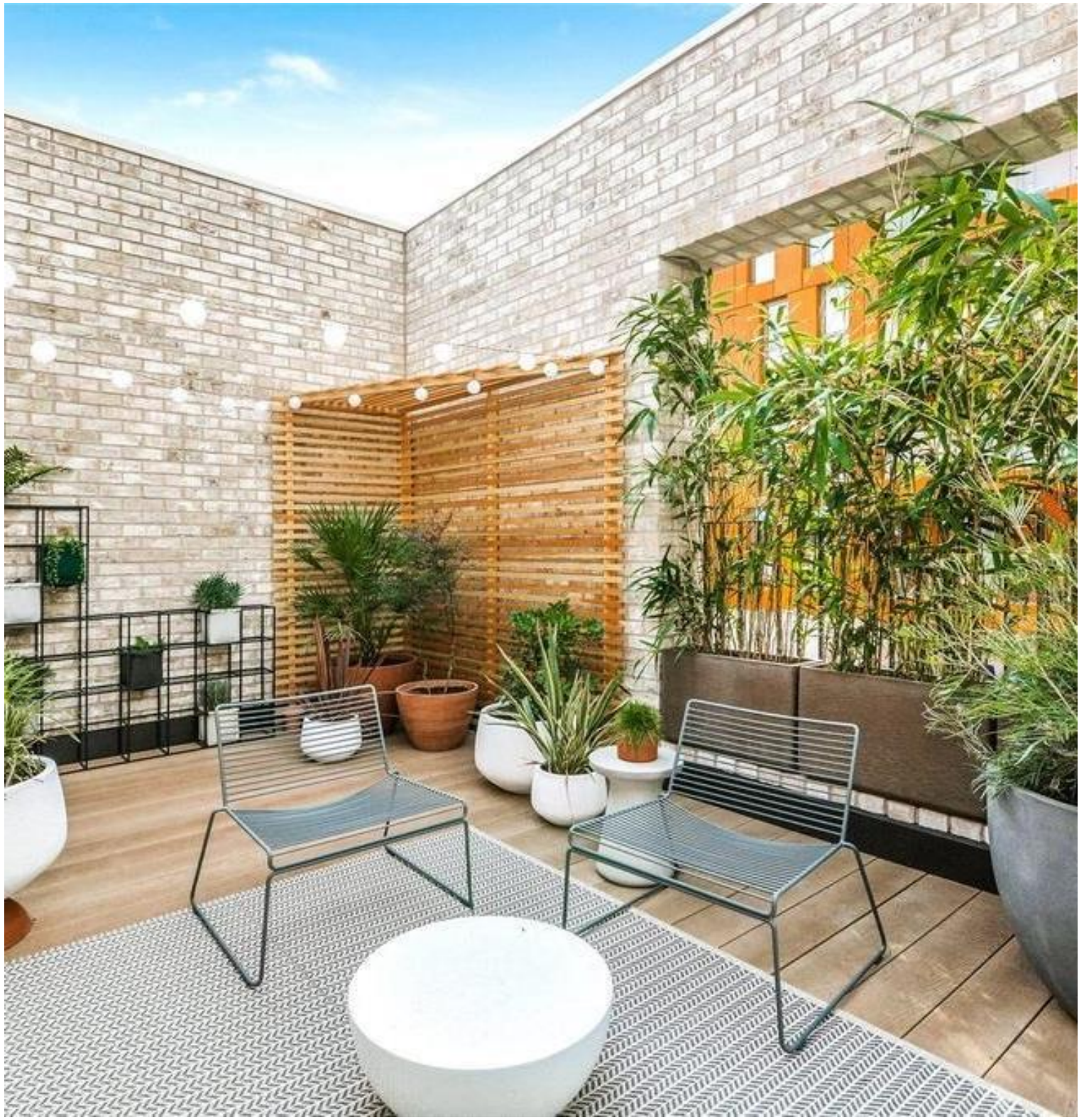


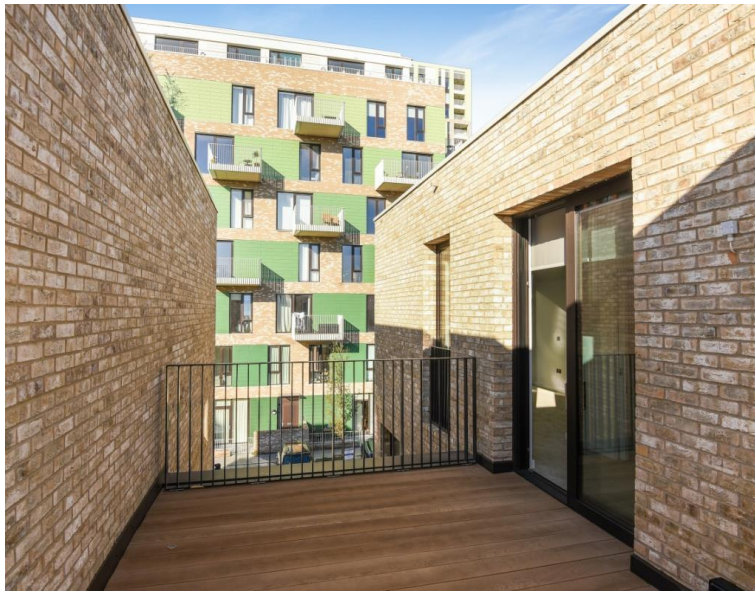


Cyrus Field Street, London SE10

Guide price £925,000 Freehold







Description

JLL are excited to bring to the market this unique and contemporary three bedroom town house within a modern, private development with off street parking located within walking distance of Westcombe Park and Maze Hill mainline stations and close to Central Greenwich with the Thames Path, shops and local amenities.

The accommodation is arranged over three floors and has 1,386 sq ft of living space. The ground floor offers open plan living with a large reception room and fitted kitchen and downstairs cloakroom. Leading up to the first floor with two double bedrooms with built in wardrobes and a separate contemporary family bathroom and the top floor has the master suite with en-suite bathroom, built in wardrobes which all leads out onto a large terrace.

The property is offered to the market with no onward chain, early viewings are highly recommended

The images used are of the development as a whole and not this particular property.

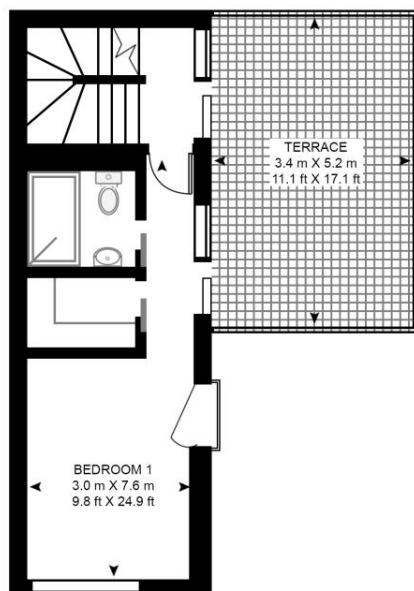
- - 3 Bedrooms
- - 2 Bathrooms + WC
- - Modern townhouse
- - Roof Terrace
- - Parking
- - Beautifully presented throughout
- - Close to transport links
- - No onward chain
- - EPC: B

Floorplan

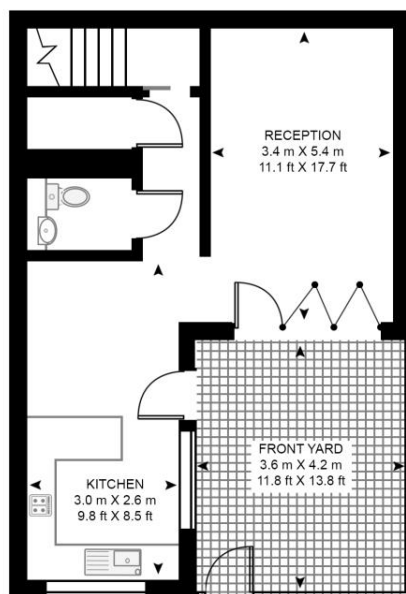
1,386 sq ft | 129 sq m

CYRUS FIELD STREET

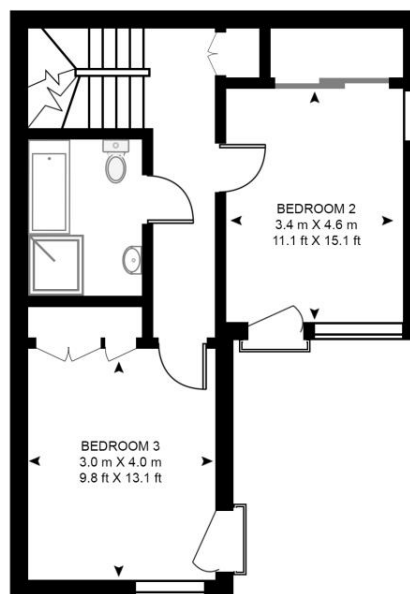
APPROXIMATE GROSS INTERNAL FLOOR AREA 1386 SQ.FT (128.8 SQ.M)



SECOND FLOOR



GROUND FLOOR



FIRST FLOOR

HDVA

This floor plan has been defined by the RICS Code of Measurement. This floor plan and all others are for approximate representative purposes only and upon usage is agreed to as such by the client.

WWW: hdvirtualart.com | TEL: 0203.974.1567 | EMAIL: info@hdvirtualart.com

Greenwich
22 College Approach,
London SE10 9HY
02088589986
lettingsgreenwich@eu.jll.com

Urban living, your way.

jll.co.uk/residential

© 2019 Jones Lang LaSalle IP, Inc. All rights reserved. All information contained herein is from sources deemed reliable; however, no representation or warranty is made to the accuracy thereof.

