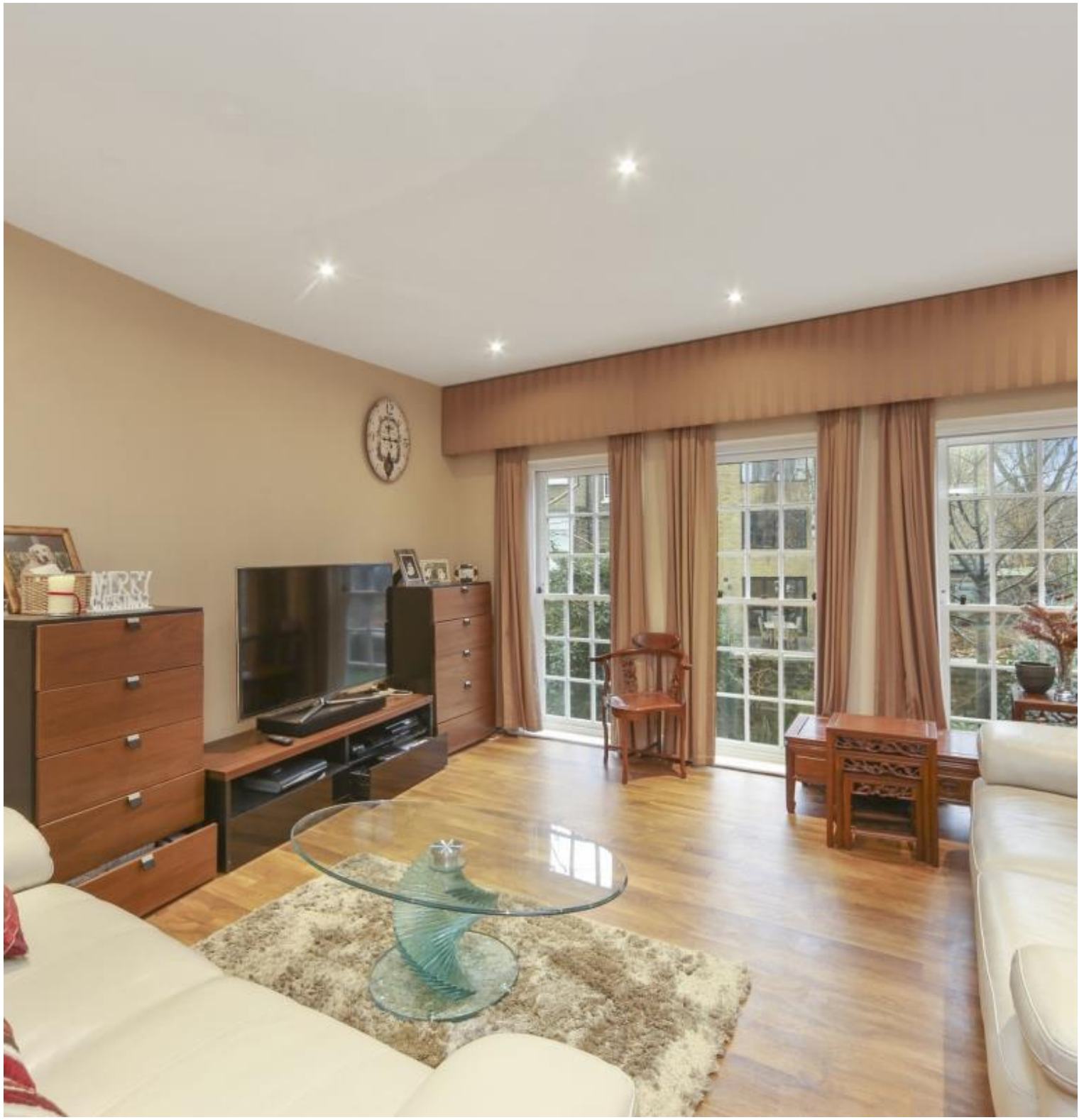




Feathers Place, London SE10

Guide price £1,450,000 Freehold







Description

A spacious family home presented in excellent condition throughout with four bedrooms, well located for Greenwich Park, Greenwich and Cutty Sark DLR stations and Greenwich mainline station. This superb family home is finished to a high standard and briefly comprises, large entrance hallway with ample storage, kitchen dining room with a range of appliances and access out to the private patio garden, cloakroom and bedroom/study. To the first floor is large reception room, further storage and a good size double bedroom. On the second floor are two fabulous bedrooms, one having an en suite bathroom and a further double bedroom and bathroom on the top floor. Additional benefits are a driveway offering off road parking

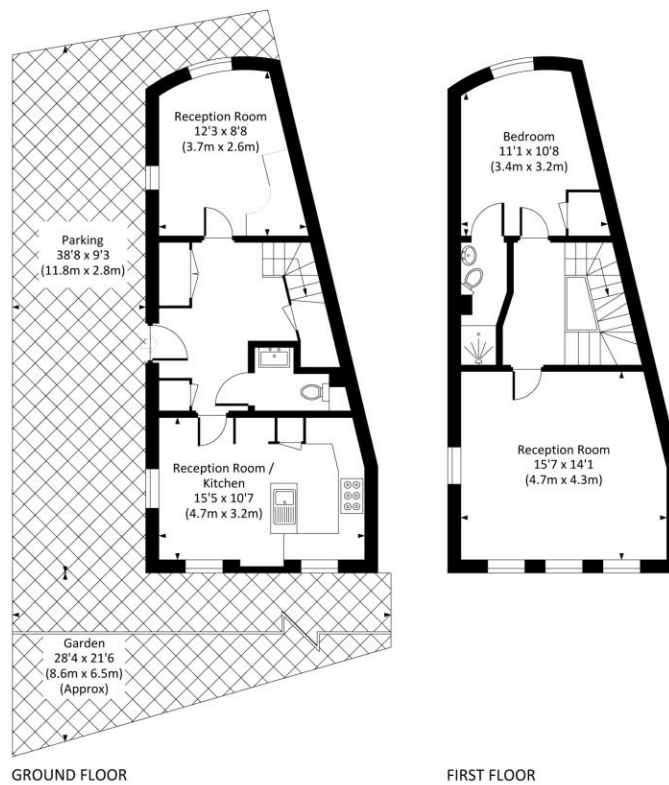
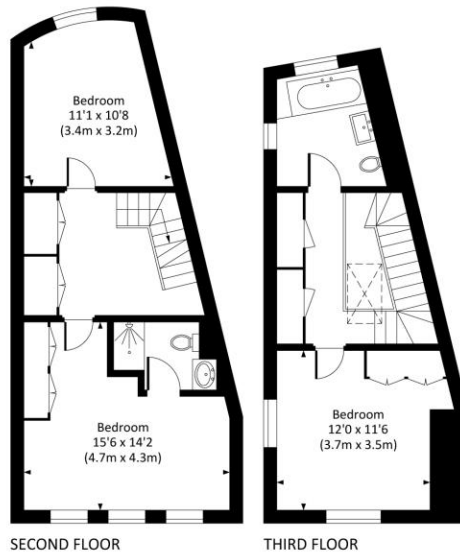
- - 4 Bedrooms
- - 3 Bathrooms
- - Off road parking
- - Greenwich park location
- - Greenwich/Cutty Sark DLR
- - Approx 1681 sq ft (156.2 sq m)
- - No onwards Chain
- - EPC: C

Floorplan

1,714 sq ft | 159 sq m

GREENWICH, SE10

Approx. gross internal area
1714 Sq Ft. / 159.3 Sq M.



All measurements have been made in accordance with RICS code of Measuring Practice which are approximate only and only for illustrative purposes. For the avoidance of doubt, Dowling Jones Design shall not be liable for any reliance on these measurements. © 2022 www.dowlingjones.com 020 7610 9933

Greenwich
22 College Approach,
London SE10 9HY
02088589986
lettingsgreenwich@eu.jll.com

Urban living, your way.

jll.co.uk/residential

© 2019 Jones Lang LaSalle IP, Inc. All rights reserved. All information contained herein is from sources deemed reliable; however, no representation or warranty is made to the accuracy thereof.

