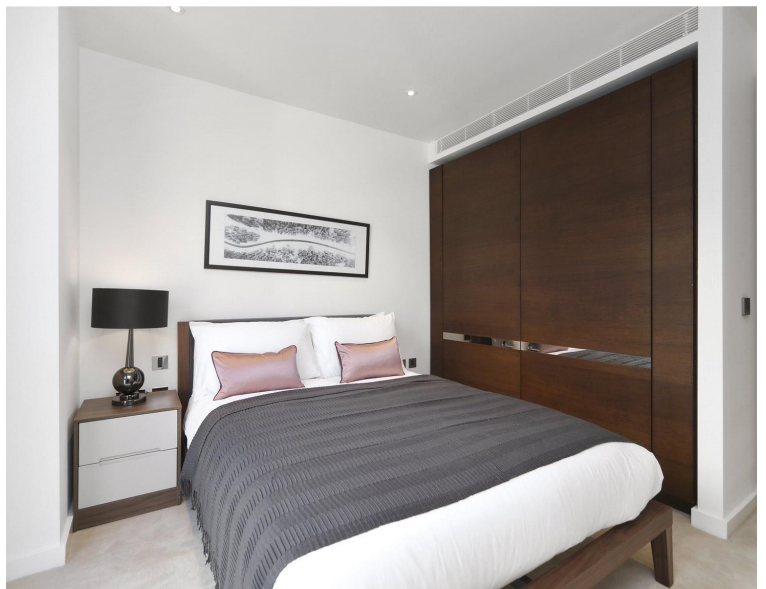


## Chartwell House, London SW10

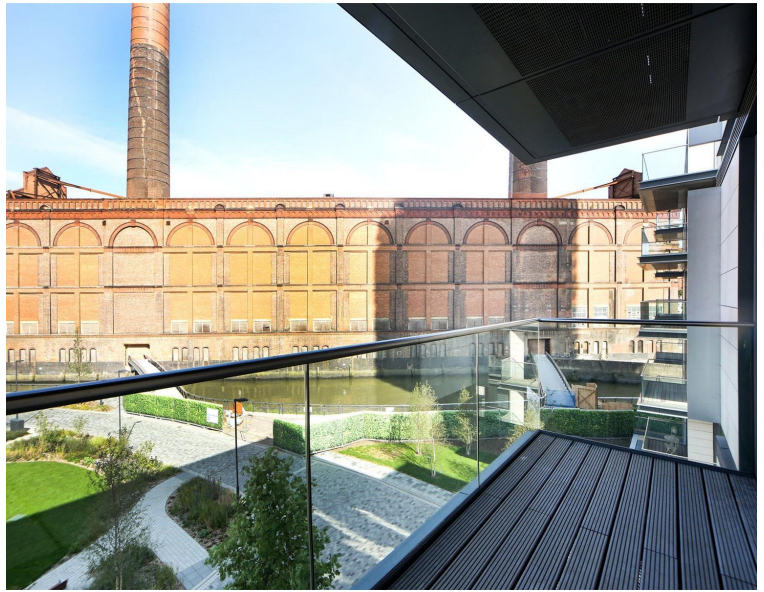
Price £1,250 per week - Furnished











## Description

A brand new stunning three bedroom apartment available on the third floor of a portered block in the new Chelsea Waterfront development. Property comprises three double bedrooms with built in storage, two large bathrooms, open plan kitchen and living room leading to private balcony, and a storage room. The apartment has been incredibly well designed and finished to the highest spec and is set beside Chelsea Harbour on the banks of The River Thames. Offered on a furnished basis and available for immediate occupancy. There are many benefits to the new development such as 24 hour concierge, on-site gym coming soon, and a secure underground parking space.

As well as paying the rent, you may also be required to make permitted payments. Please visit [jll.co.uk/fees](http://jll.co.uk/fees) for details of fees which may be payable when renting a property. If your tenancy does not qualify as an AST, additional fees may apply.

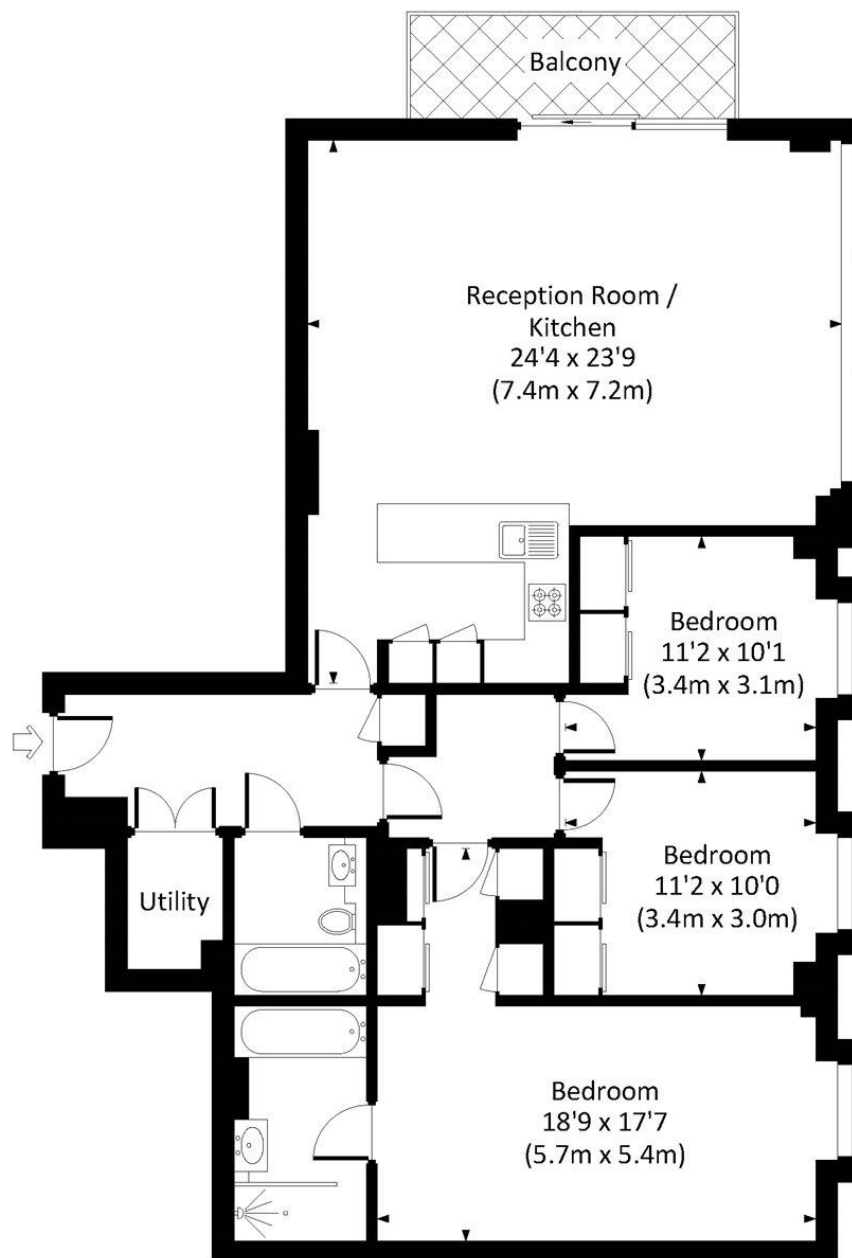
- Three bedrooms
- Two bathrooms
- 24 Hour concierge
- On-site Gym
- Riverside development
- Approx 1308 sq ft (122 sq m)
- Furnished
- EPC: B

# Floorplan

sq ft | sq m

## CHARTWELL HOUSE, SW10

Approx. gross internal area  
1308 Sq Ft. / 121.5 Sq M.



THIRD FLOOR



All measurements have been made in accordance with RICS code of Measuring Practice which are approximate only and only for illustrative purposes. For the avoidance of doubt, Dowling Jones Design shall not be liable for any reliance on these measurements. © 2018 www.dowlingjones.com 020 7610 9933

Kensington  
387 Kensington High Street,  
London W14 8QA  
+4420 7087 5696  
lettingskensington@eu.jll.com

*Urban living, your way.*

[jll.co.uk/residential](http://jll.co.uk/residential)

© 2019 Jones Lang LaSalle IP, Inc. All rights reserved. All information contained herein is from sources deemed reliable; however, no representation or warranty is made to the accuracy thereof.

