

High Street, London E15

Guide price £600,000 Leasehold







Description

This 25th floor, modern two bedroom two bathroom apartment is located in the River Heights development just a short walk from Pudding mill Lane DLR and Stratford underground station.

The property comprises of a spacious open plan living room and fitted kitchen with access to a balcony offering panoramic views across both Canary Wharf and Greenwich. Two double bedrooms both with access onto a second balcony, master with en-suite bathroom and a separate family bathroom.

The property further benefits air conditioning, superb far reaching views. 24hr concierge, residents roof terrace and residential gym.

The property is being offered with no onward chain and early viewings are highly recommended.

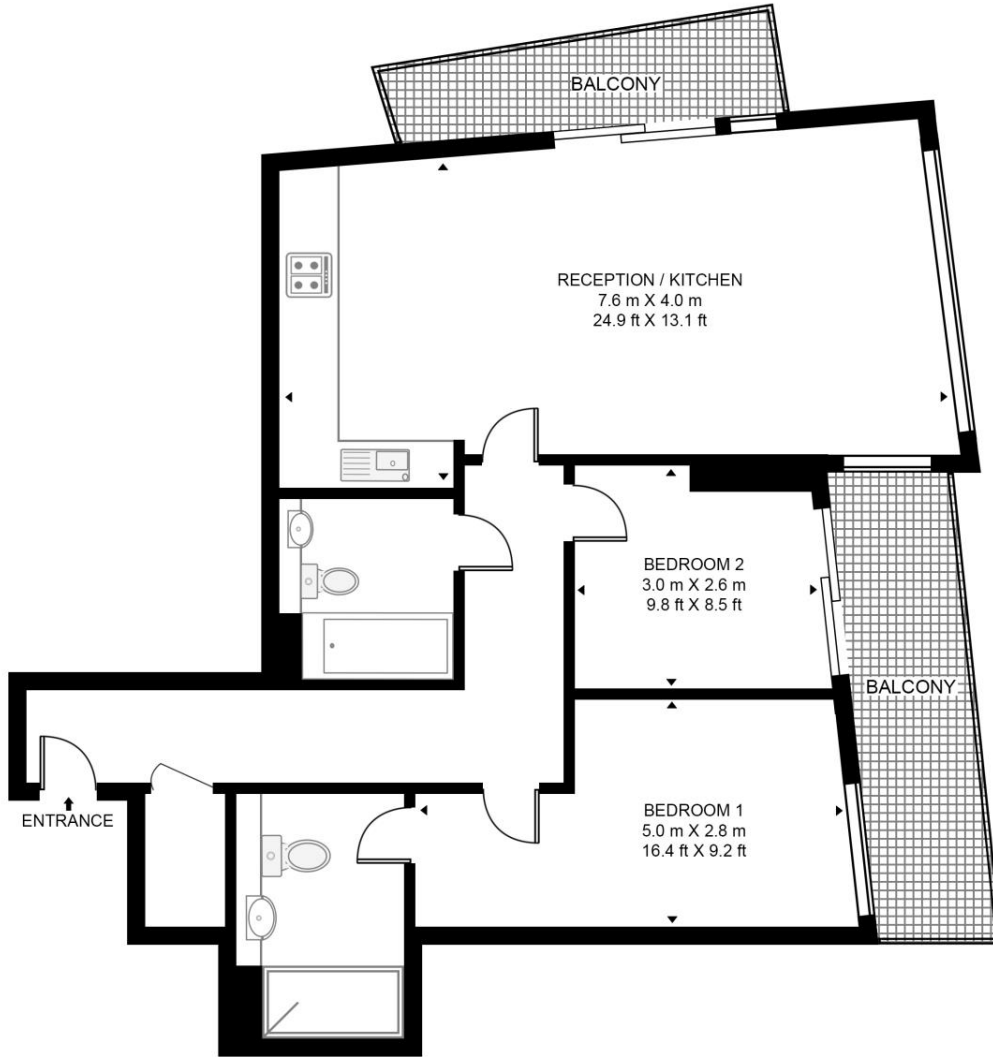
- - 2 Bedrooms
- - 2 Bathrooms
- - 2 Balconies
- - 25th Floor
- - Concierge
- - Residents gym
- - Approx. 752 sq ft (69.9 sq m)
- - 0.4 mile from Pudding Mill Lane DLR station
- - Leasehold
- - EPC: B

Floorplan

752 sq ft | 70 sq m

RIVER HEIGHTS

APPROXIMATE GROSS INTERNAL FLOOR AREA 752 SQ.FT (69.9 SQ.M)



TWENTY FIFTH FLOOR



This floor plan has been defined by the RICS Code of Measurement. This floor plan and all others are for approximate representative purposes only and upon usage is agreed to as such by the client.
WWW: hdvirtualart.com | TEL: 0203.974.1567 | EMAIL: info@hdvirtualart.com

Stratford
5 Station Street,
London E15 1DA
+4420 3147 1500
Lettingsstratford@eu.jll.com

Urban living, your way.

jll.co.uk/residential

© 2019 Jones Lang LaSalle IP, Inc. All rights reserved. All information contained herein is from sources deemed reliable; however, no representation or warranty is made to the accuracy thereof.

