



**BOW ROAD
STRATFORD
LONDON E3**





New to the market becomes available this stunning 1 double bedroom apartment with private terrace meticulously refurbished from head to toe with the finest fixtures and fittings.

Located perfectly on Bow Road you are a 0.2 mile walk to Bow Road Station and just a 50 yard walk to Bow Church DLR, making any commute into London a quick and easy one.

The property boasts being completely stripped and refurbished from head to toe comprising large living/dining room with extra storage room, large double bedroom, ultra modern bathroom suite, sleek kitchen with integrated appliances leading to private terrace area with great levels of storage throughout.

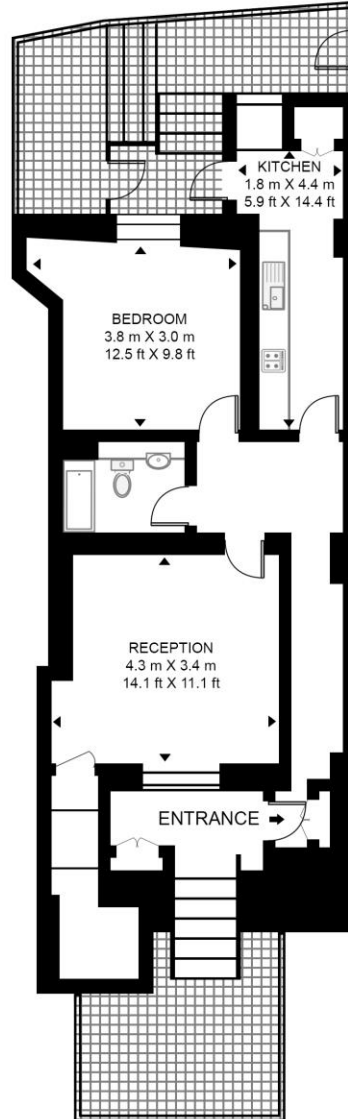
- 1 bedroom
- 1 bathroom
- Brand newly refurbished throughout
- Private terrace
- Close to public transport
- Sought after location
- 697 sq ft (64.8 sq m)
- EPC Rating D

PRICE
OIEO £450,000

GROSS INTERNAL AREA
697 sq ft (64.8 sq m)

BOW ROAD

APPROXIMATE GROSS INTERNAL FLOOR AREA 697 SQ.FT (64.8 SQ.M)



LOWER GROUND FLOOR



HDVA

This floor plan has been defined by the RICS Code of Measurement. This floor plan and all others are for approximate representative purposes only and upon usage is agreed to as such by the client.

WWW: hdvirtualart.com | TEL: 0203.974.1567 | EMAIL: info@hdvirtualart.com

Unex Tower
5 Station Street
London
E15 1DA

These particulars are for general information only and do not constitute any part of an offer or contract. All statements contained therein are made without responsibility on the part of the vendors or lessors and are not to be relied upon as statement or representation of fact. Intending purchasers or lessees must satisfy themselves, by inspection, or otherwise, as to the correctness of each of the statements or dimensions contained in these particulars..