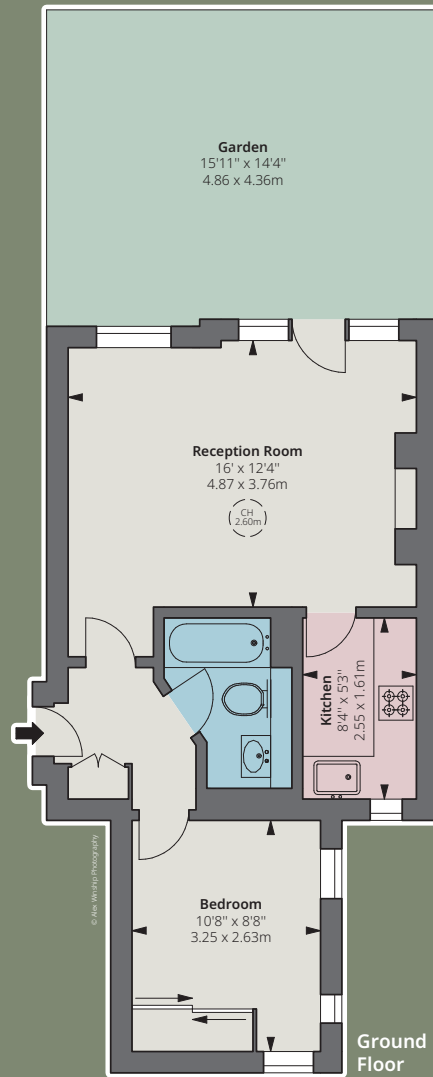




ARUNDEL COURT

JUBILEE PLACE • CHELSEA SW3



Approximate Gross
Internal Area
441 sq ft
40.97 sq m



A charming pied-à-terre situated on the ground floor of this well-known, small 1930s modern block with a caretaker. It has the benefit of a private west-facing patio garden and is moments away from Chelsea Green which is famed for its village atmosphere and quaint retail outlets.

- Entrance hall
- Bedroom
- Bathroom
- Kitchen
- Reception room
- Patio garden
- Communal central heating and hot water
- Caretaker
- Lift

Guide Price:
£725,000

Tenure
Leasehold 125 years

Ground Rent
Peppercorn

Service Charge
Approximately £1,863
for half year to 24/3/22
plus a reserve fund
contribution of £754.25

Local Authority:
Royal Borough of
Kensington and Chelsea

Council Tax
Band E
EPC
Rating D