



## Peartree Way, London SE10

Guide price £470,000 Leasehold







## Description

A spacious, two bedroom apartment, in a modern and contemporary block, moments from the River Thames and the O2 Arena.

The property comprises, an open plan living room/kitchen with integrated appliances and wooden flooring, two double bedroom, ensuite and bathroom with bath and shower. Further benefits include concierge service and is with no onward chain.

Early viewings are highly recommended.

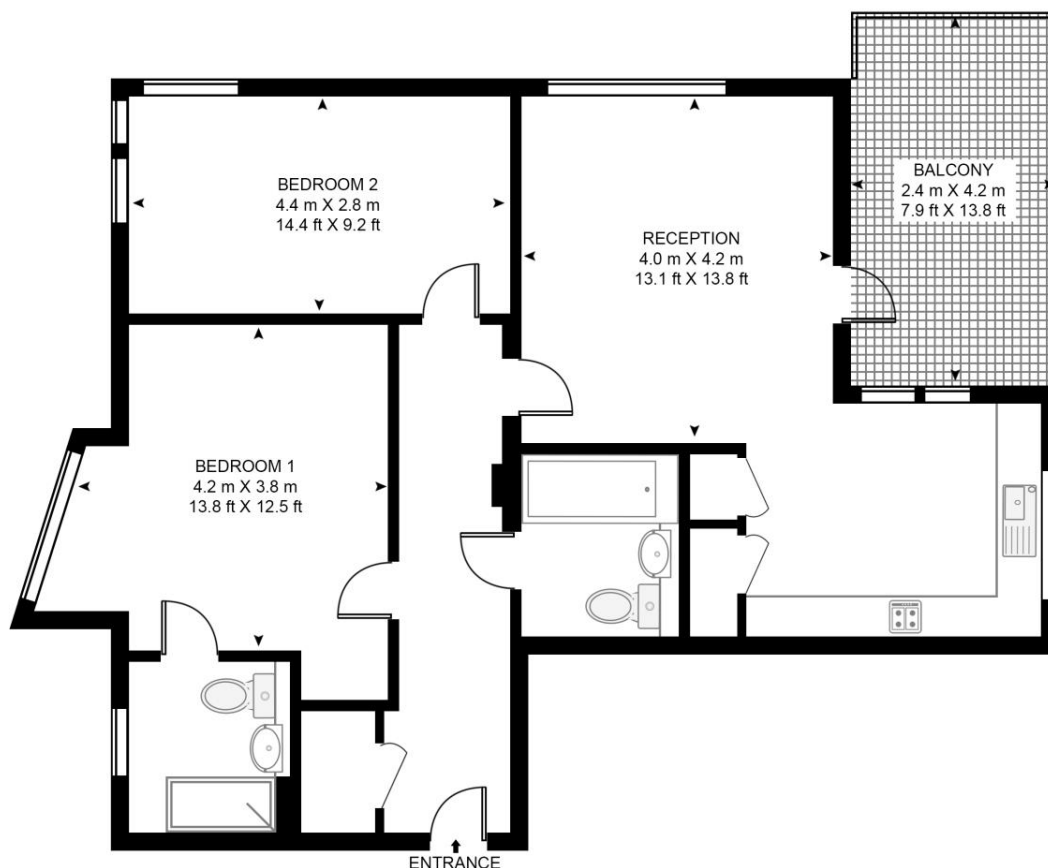
- - 2 Double bedroom
- - 2 Bathroom
- - Modern Apartment
- - Close to the River Thames
- - Greenwich Peninsular location
- - EWS1 Complaint
- - No onward chain
- - 778 Approx Sq Ft (72.3 sq m)
- - EPC: B

# Floorplan

778 sq ft | 72 sq m

## HANKINS HOUSE

APPROXIMATE GROSS INTERNAL FLOOR AREA 778 SQ.FT (72.3 SQ.M)



## THIRD FLOOR

**HDVA**

This floor plan has been defined by the RICS Code of Measurement. This floor plan and all others are for approximate representative purposes only and upon usage is agreed to as such by the client.

WWW: [hdvirtualart.com](http://hdvirtualart.com) | TEL: 0203.974.1567 | EMAIL: [info@hdvirtualart.com](mailto:info@hdvirtualart.com)

Greenwich  
22 College Approach,  
London SE10 9HY  
02088589986  
[lettingsgreenwich@eu.jll.com](mailto:lettingsgreenwich@eu.jll.com)

*Urban living, your way.*

[jll.co.uk/residential](http://jll.co.uk/residential)

© 2019 Jones Lang LaSalle IP, Inc. All rights reserved. All information contained herein is from sources deemed reliable; however, no representation or warranty is made to the accuracy thereof.

