



Waterside Apartments, London N4

Guide price £835,000 Leasehold







Description

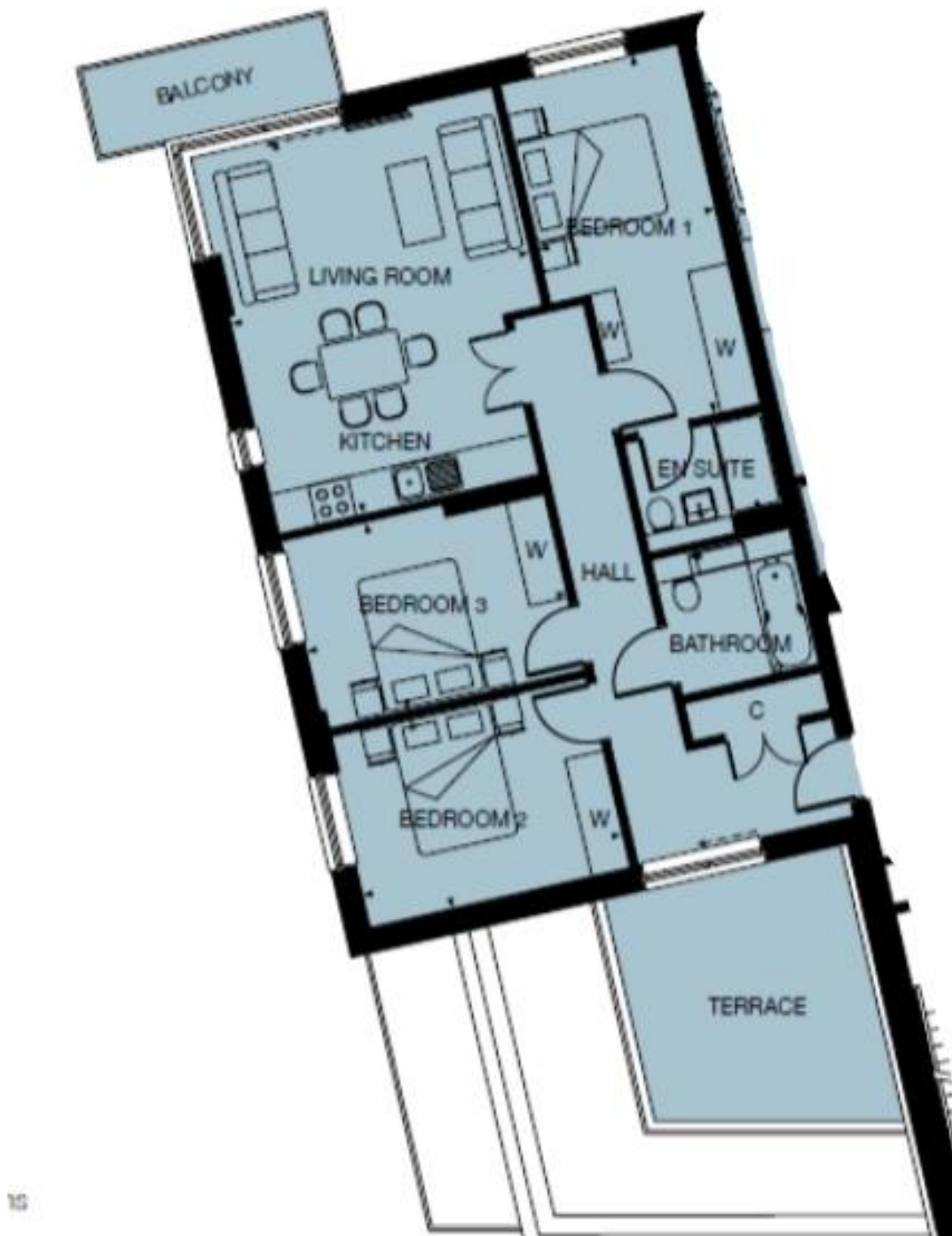
Measuring over 900 square feet internally and naturally bright, this versatile home would make a lovely home for a purchaser. There is a lovely private terrace that is relatively secluded, making this ideal to entertain or relax upon. There are three good size bedrooms, two bathrooms and an additional balcony. There is also the additional benefit of a 24 concierge, an original 999 year lease and secure underground parking.

Waterside Apartments is superbly positioned at the centre of Woodberry Down, making this one of the most sought after locations in the development. It set just by the West Reservoir and communal gardens, making for a very pleasant setting. The development benefits from a range of local amenities including two convenience stores, several eateries and a gastropub. Manor House Station is within easy reach as is Haringay Green Lanes.

- - Top floor
- - Private terrace
- - Delightful views
- - Naturally bright
- - Neutral decor
- - Secure underground parking
- - EPC rating: B
- - Council tax: Band D, Borough of Hackney

Floorplan

sq ft | sq m



Finsbury Park
Woodberry Park,
London N4 2BL
020 7870 6667
lettingsfinsburypark@eu.jll.co

Urban living, your way.

jll.co.uk/residential

© 2019 Jones Lang LaSalle IP, Inc. All rights reserved. All information contained herein is from sources deemed reliable; however, no representation or warranty is made to the accuracy thereof.

