



**AZURE BUILDING,  
GREAT EASTERN ROAD  
LONDON E15**





This high specification modern two bedroom, two bathroom property is located in the Azure Building, a part of the Stratosphere development just 0.2 mile from Stratford Underground station.

The property comprises large entrance hall with built in storage, open plan reception room and fitted kitchen with double doors to balcony with urban views.

Two double bedrooms, master with en-suite shower room and a separate family bathroom.

The property further benefits from underfloor heating and a large communal roof terrace with views across London.

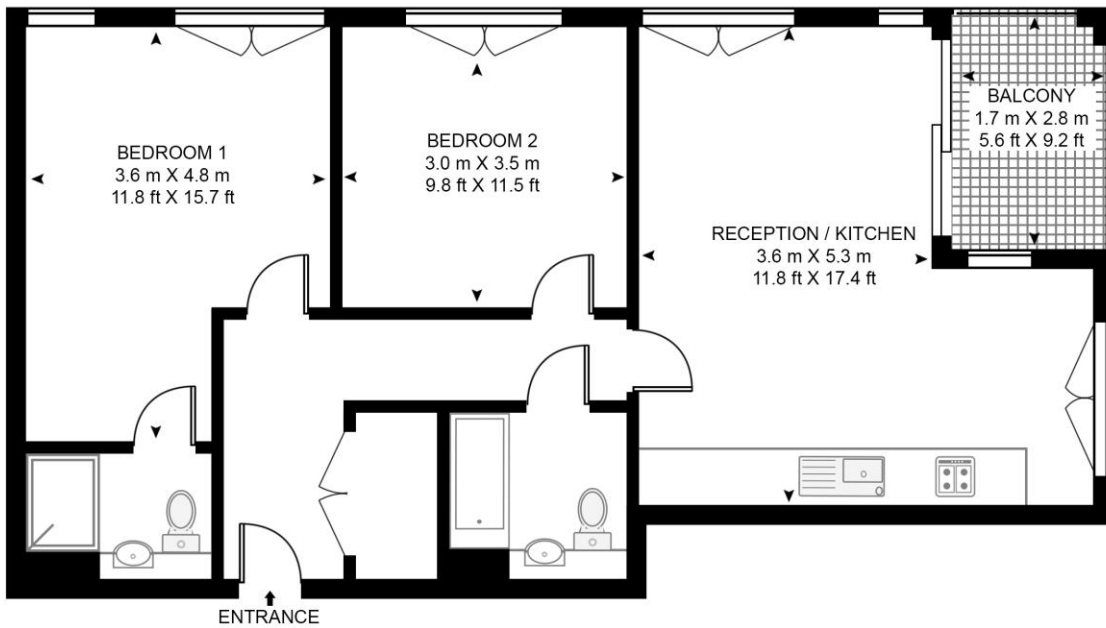
- 2 Bedrooms
- 2 Bathrooms
- 9th Floor modern apartment
- Balcony
- Roof Terrace
- Communal Garden
- 0.2 miles from Stratford underground
- Approx. 748 sq ft (69.5 m)
- EPC:B

**PRICE**  
OIEO £550,000

**GROSS INTERNAL AREA**  
748 sq ft (69.5 sq m)

## AZURE BUILDING

APPROXIMATE GROSS INTERNAL FLOOR AREA 748 SQ.FT (69.5 SQ.M)



### NINTH FLOOR



**HDVA**

This floor plan has been defined by the RICS Code of Measurement. This floor plan and all others are for approximate representative purposes only and upon usage is agreed to as such by the client.

WWW: [hdvirtualart.com](http://hdvirtualart.com) | TEL: 0203.974.1567 | EMAIL: [info@hdvirtualart.com](mailto:info@hdvirtualart.com)

Unex Tower  
5 Station Street  
London  
E15 1DA

These particulars are for general information only and do not constitute any part of an offer or contract. All statements contained therein are made without responsibility on the part of the vendors or lessors and are not to be relied upon as statement or representation of fact. Intending purchasers or lessees must satisfy themselves, by inspection, or otherwise, as to the correctness of each of the statements or dimensions contained in these particulars..