



Courtfield Gardens, London SW5

Price £725 per week - Unfurnished







Description

A wonderful third floor flat (no lift) in this attractive Victorian conversion in Courtfield Gardens. The property consists of master bedroom with en suite bathroom, second double bedroom, shower room, a large reception room and a fully fitted kitchen. Courtfield Gardens is located north of the Old Brompton Road and only moments away from the many shops, restaurants and transport facilities of Gloucester Road.

Please note this property is offered on an unfurnished basis only, any furniture shown in the pictures is not included.

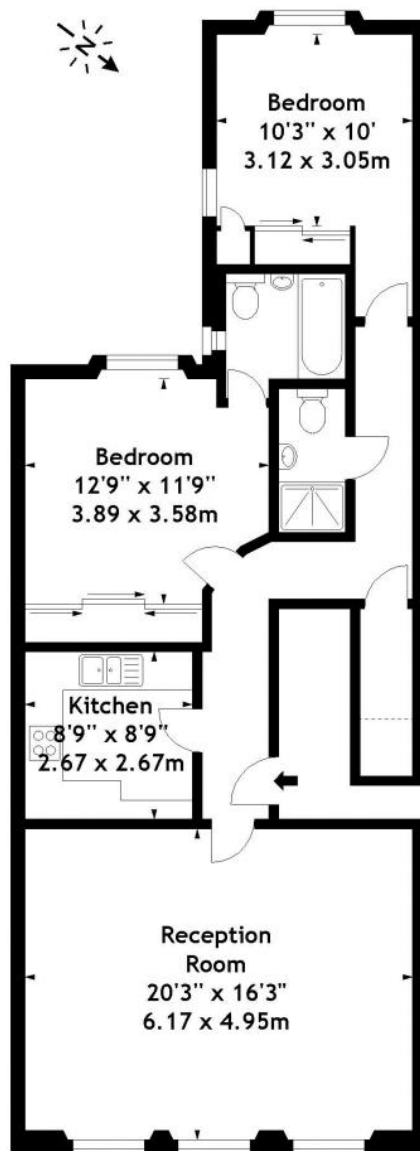
As well as paying the rent, you may also be required to make permitted payments. Please visit jll.co.uk/fees for details of fees which may be payable when renting a property. If your tenancy does not qualify as an AST, additional fees may apply.

- - Master bedroom with en suite bathroom
- - Second double bedroom
- - Shower room
- - Reception room
- - Modern kitchen
- - Unfurnished
- - Approx. 924 sq ft (85 sq m)
- - EPC: C

Floorplan

925 sq ft | 86 sq m

Approx. Gross Internal Area
924 Sq Ft - 85.84 Sq M



Third Floor

Measured in accordance with RICS guidelines. Every attempt is made to ensure accuracy, however all measurements are approximate. This floor plan is for illustrative purposes only and is not to scale.

Knightsbridge
174 Brompton Road,
London SW3 1HP
+4420 7306 1600
lettingsknightsbridge@eu.jll.co

Urban living, your way.

jll.co.uk/residential

© 2019 Jones Lang LaSalle IP, Inc. All rights reserved. All information contained herein is from sources deemed reliable; however, no representation or warranty is made to the accuracy thereof.

