

**Millbank, London SW1P**  
Price £1,300 per week - Furnished







## Description

A beautifully furnished, luxury 2 bedroom apartment located within the prestigious Millbank Residences. Developed by Berkley Homes Millbank offers the highest specification apartments will include 5\* resident amenities.

This property benefits from two equal sized bedrooms, master bedroom with en-suite. Open plan living space with fully integrated kitchen and double height ceilings throughout the property.

As well as paying the rent, you may also be required to make some additional permitted payments. If your tenancy does not qualify as an AST, additional fees may apply. Please visit [jll.co.uk/fees](http://jll.co.uk/fees) for details of fees which may be payable when renting a property.

- Master bedroom with a dressing room and en-suite bathroom
- Further double bedroom
- Modern open plan kitchen with reception/dining room area
- Bathroom
- Classic contemporary design
- Luxury on site facilities
- 24 hour concierge
- 0.5 Miles to Westminster station
- Ground floor
- Approx: 811 sq ft ( 75 sq m)

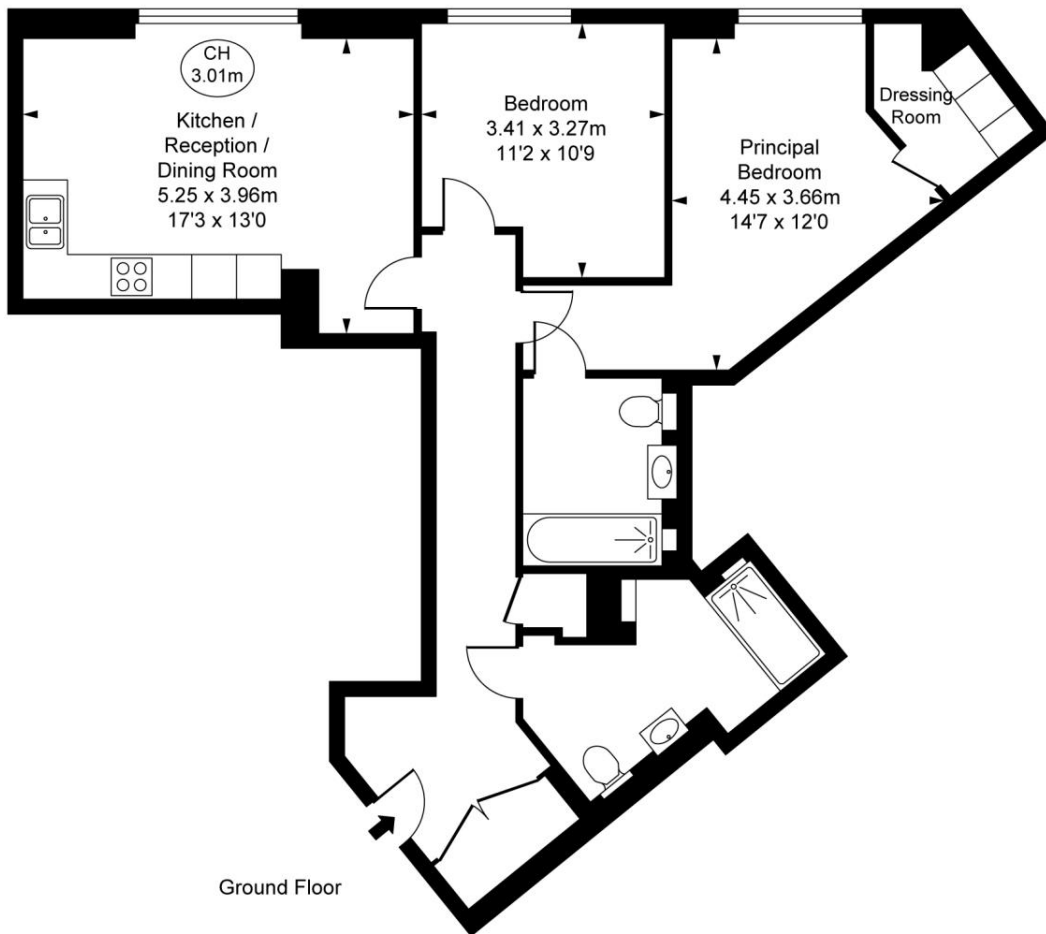
# Floorplan

75 sq ft | 7 sq m

## Millbank Residences, SW1P

Approximate Gross Internal Area  
75.39 sq m / 811 sq ft

( CH = Ceiling Heights )



This plan is not to scale. It is for guidance and not for valuation purposes.  
All measurements and areas are approximate only, and have been prepared in accordance with the current edition of the RICS Code of Measuring Practice.  
© Fulham Performance

Mayfair and Marylebone  
JLL, 13a St George Street,  
London W1S 1FE  
+44 207 399 5550  
tenancymanagement@eu.jll.c

*Urban living, your way.*

[jll.co.uk/residential](http://jll.co.uk/residential)

© 2019 Jones Lang LaSalle IP, Inc. All rights reserved. All information contained herein is from sources deemed reliable; however, no representation or warranty is made to the accuracy thereof.

