



## 2 Michael Road, London SW6

Price £650 per week - Furnished







## Description

A third floor South West facing 1 bedroom apartment with a balcony in the new and exciting Kings Road Park development, SW6. The development offers fantastic on-site resident facilities and is conveniently located for access to Central London.

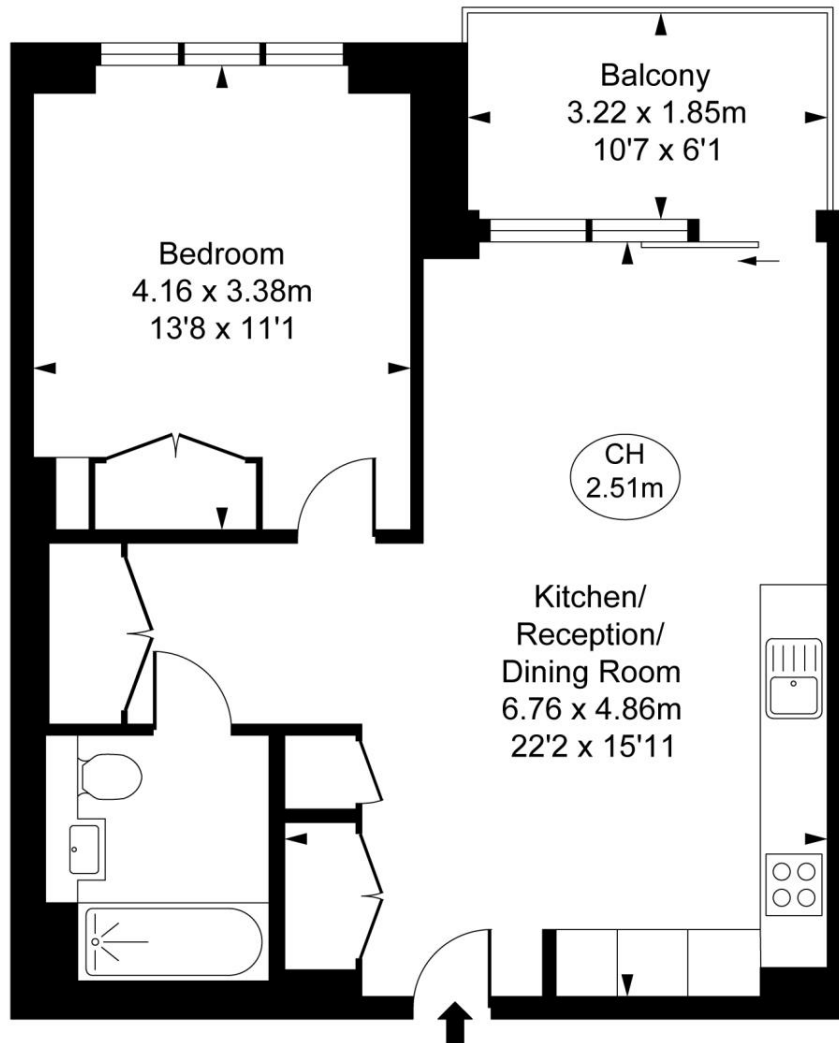
As well as paying the rent, you may also be required to make some additional permitted payments. If your tenancy does not qualify as an AST, additional fees may apply. Please visit [jll.co.uk/fees](http://jll.co.uk/fees) for details of fees which may be payable when renting a property.

- - 25m swimming pool
- - Vitality pool
- - Steam and sauna rooms
- - Golf simulator
- - Games room
- - Gymnasium
- - Fitness studios
- - Treatment rooms
- - 24 hour concierge
- - Private dining room

# Floorplan

561 sq ft | 52 sq m

Hampton House,  
Michael Road, SW6  
Approximate Gross Internal Area  
**52.11 sq m / 561 sq ft**  
( CH = Ceiling Heights )



Third Floor

This plan is not to scale. It is for guidance and not for valuation purposes.  
All measurements and areas are approximate only, and have been prepared in accordance with the current edition of the RICS Code of Measuring Practice.  
© Fulham Performance

Chelsea  
2 Cale Street,  
London SW3 3QU  
+4420 7399 5010  
lettingschelsea@eu.jll.com

*Urban living, your way.*

[jll.co.uk/residential](http://jll.co.uk/residential)

© 2019 Jones Lang LaSalle IP, Inc. All rights reserved. All information contained herein is from sources deemed reliable; however, no representation or warranty is made to the accuracy thereof.

