



Tudway Road, London SE3

Guide price £500,000 Leasehold







Description

This superb penthouse with wrap around balcony with views of Sutcliffe park is located in the desirable Kidbrooke Village development. The property is just a short walk from Kidbrooke mainline station for an easy commute to London Bridge, Charing Cross and Cannon Street.

The property comprises of a large living room open plan to kitchen with floor to ceiling windows and access to a fantastic wrap around terrace. Modern kitchen with white high gloss units and space for dining. Master bedroom with spacious fitted wardrobes and access to the terrace, luxurious ensuite bathroom. Second double bedrooms with access to the terrace. Modern well finished family bathroom.

The property also benefits from secure parking and a concierge service. The property is offered with no onward chain, early viewings are highly recommended

- - 2 Bedrooms
- - 2 Bathrooms
- - Penthouse apartment
- - Wrap around terrace
- - Underground parking
- - Approx 764 sq ft (71 Sq m)
- - No onward chain
- - EPC: B

Floorplan

764 sq ft | 71 sq m

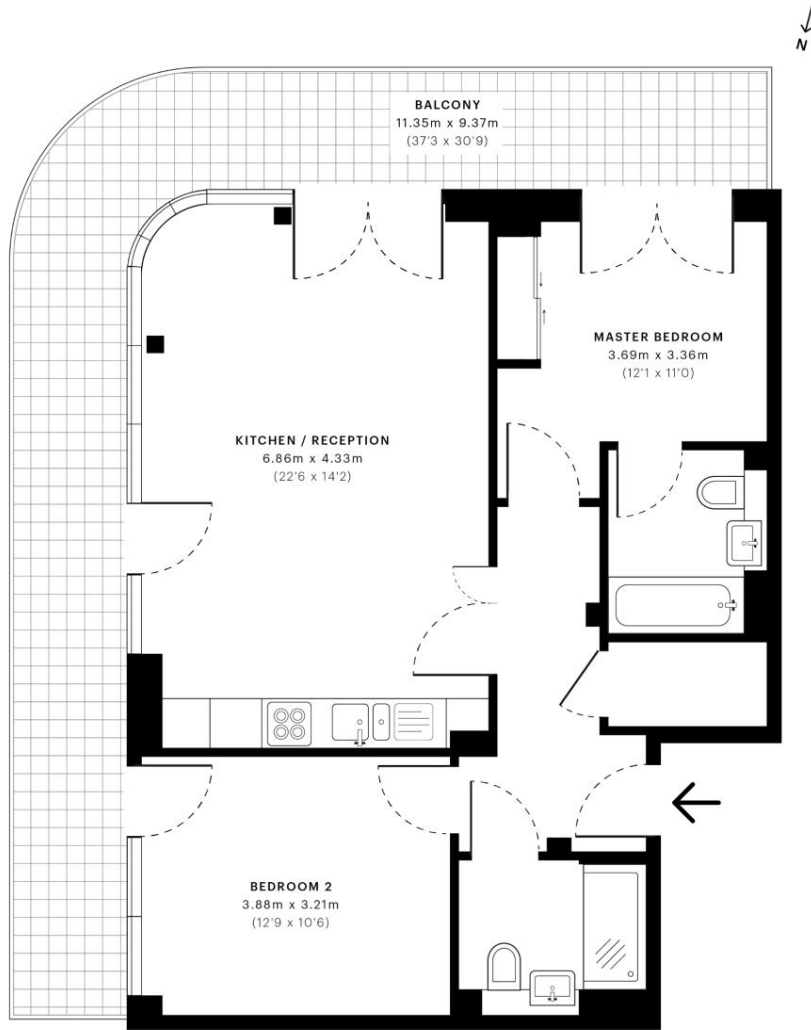


Maltby House, SE3

CAPTURE DATE
06/02/2019

LASER SCAN POINTS
33,330,782

GROSS INTERNAL AREA
71.63 Sqm / 771.03 Sqft



— Fifth Floor

GROSS INTERNAL AREA
The footprint of the property
71.63 Sqm / 771.03 Sqft

NET AREA (INTERNAL)
Excludes walls and external features
69.22 Sqm / 745.08 Sqft

EXTERNAL STRUCTURAL FEATURES
Balconies, terraces, verandas etc.
27.95 Sqm / 300.85 Sqft

RESTRICTED HEAD HEIGHT
Limited use area under 1.9m
0.00 Sqm / 0.00 Sqft



Spec floor plans are produced in accordance with Royal Institution of Chartered Surveyors Property Measurement Standards. If you intend to rely on any measurement in a transaction you should perform your own checks. Plot/Gardens illustrative only and excluded from all area calculations.

IPMS 3B RESIDENTIAL
99.58 Sqm / 1071.88 Sqft

IPMS 3C RESIDENTIAL
97.16 Sqm / 1045.83 Sqft

SPEC ID
5c542ec5c6f3510a1f7302e



Greenwich
22 College Approach,
London SE10 9HY
02088589986
lettingsgreenwich@eu.jll.com

Urban living, your way.

jll.co.uk/residential

© 2019 Jones Lang LaSalle IP, Inc. All rights reserved. All information contained herein is from sources deemed reliable; however, no representation or warranty is made to the accuracy thereof.

