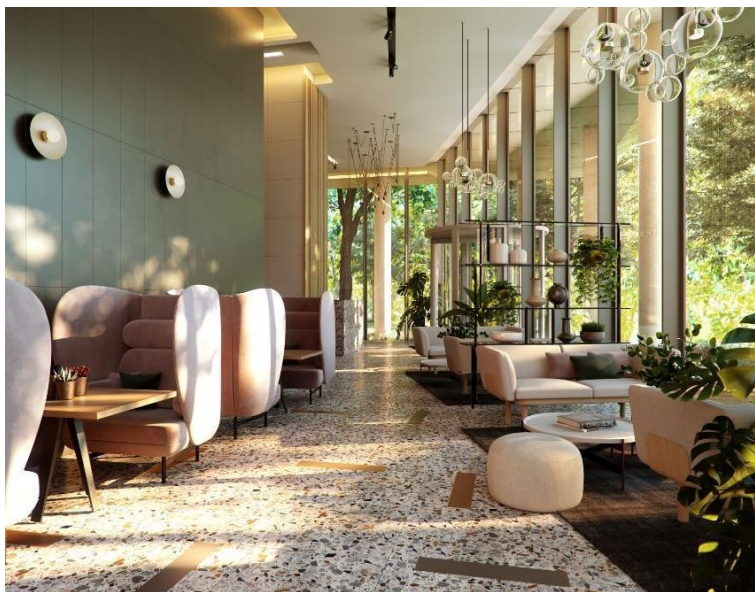




**Brill Place, London NW1**  
Asking price £895,000 Leasehold







## Description

A one bedroom apartment in the iconic new Grand Central development, Kings cross.

The standout tower is conveniently placed for Central London yet situated in a quiet Parkside enclave with two acres of public green space where you can relax and enjoy the benefits of nature.

The apartment offers an open plan reception with fully fitted kitchen, private balcony, bedroom with fitted wardrobes, contemporary bathroom.

King's Cross is one of the capital's best-connected locations with six tube lines, local bus routes, mainline trains across the country and even the Eurostar service for international travel is accessible by the near by St Pancras.

A short walk away the picturesque banks of the Regent's Canal provide access to the world-famous Camden Market and the thriving nightlife scene of Camden, including a number of Jazz Café's and the Roundhouse live music venue.

EPC: TBC, Ground rent: £600pa, Service charge: approx. £5.98 per sq ft, Leasehold: 999 years, Council tax band: TBC

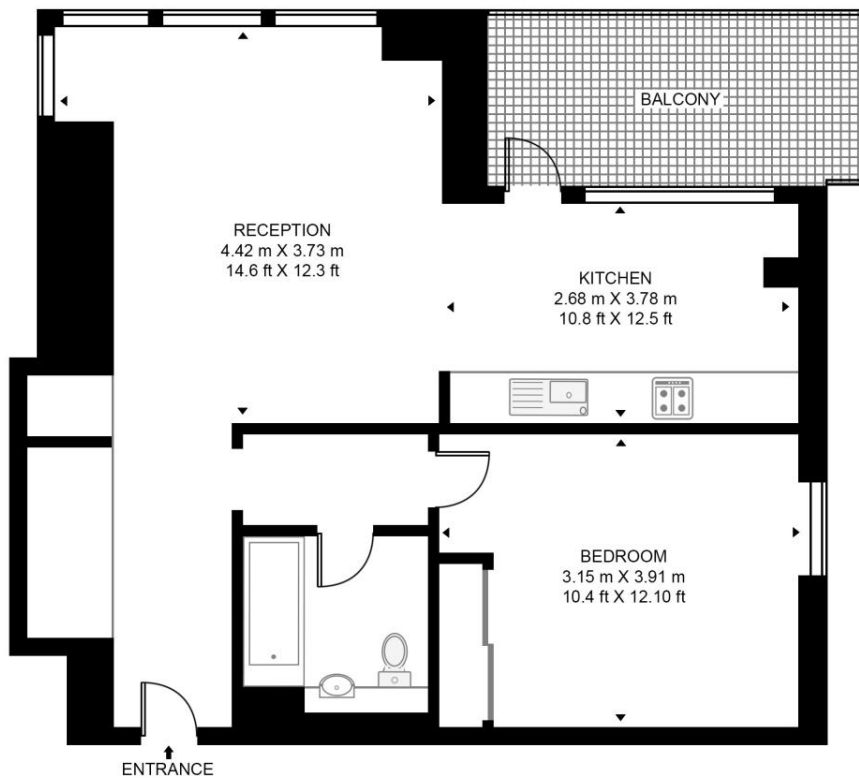
- - 1 Bedroom
- - 1 Bathroom
- - Private balcony
- - Daytime concierge
- - Residents lounge
- - 0.1 Miles to St Pancras station
- - Approx. 591 Sq Ft
- - EPC: TBC

# Floorplan

591 sq ft | 55 sq m

## GRAND CENTRAL APARTMENTS

APPROXIMATE GROSS INTERNAL FLOOR AREA 591 SQ.FT (54.93 SQ.M)



FIFTH FLOOR



This floor plan has been defined by the RICS Code of Measurement. This floor plan and all others are for approximate representative purposes only and upon usage is agreed to as such by the client.  
WWW: [hdvirtualart.com](http://hdvirtualart.com) | TEL: 0203.974.1567 | EMAIL: [info@hdvirtualart.com](mailto:info@hdvirtualart.com)

City  
25 Walbrook The Walbrook  
Building,  
London EC4N 8AF  
+4420 7337 4000

*Urban living, your way.*

[jll.co.uk/residential](http://jll.co.uk/residential)

© 2019 Jones Lang LaSalle IP, Inc. All rights reserved. All information contained herein is from sources deemed reliable; however, no representation or warranty is made to the accuracy thereof.

