



## Draycott Place, London SW3

Price £450 per week - Furnished





# Description

A well presented second floor flat (with lift) in this period building in the heart of Chelsea. The property consists of one large double bedroom, marble bathroom, spacious reception room and a fully fitted, modern kitchen. The flat benefits from wooden floors throughout and an abundance of natural light. Draycott Place is close to all the amenities with plenty of shops, bars and restaurants within walking distance.

As well as paying the rent, you may also be required to make permitted payments. Please visit [jll.co.uk/fees](http://jll.co.uk/fees) for details of fees which may be payable when renting a property. If your tenancy does not qualify as an AST, additional fees may apply.

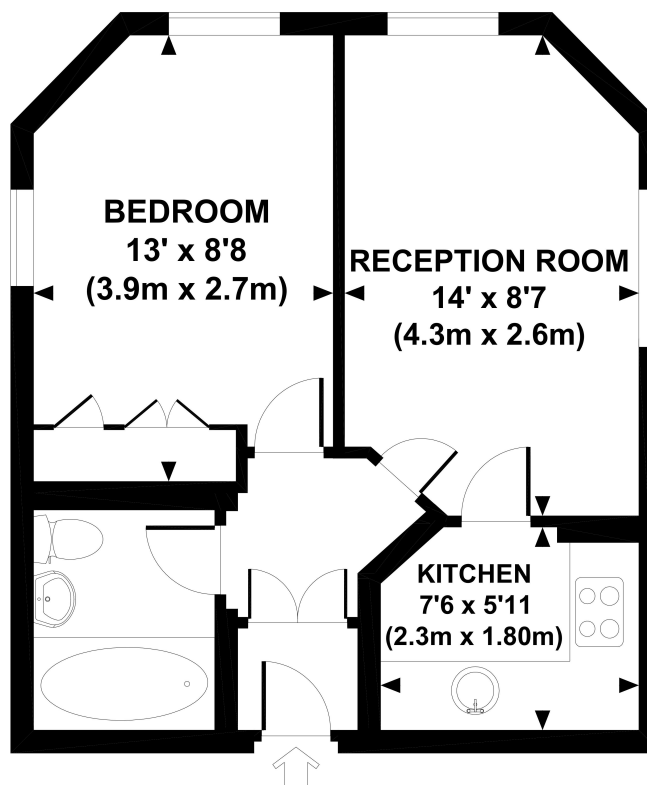


- - 1 Double bedroom
- - 1 Bathroom
- - Reception room
- - Fully fitted kitchen
- - Second floor
- - Lift
- - Furnished
- - Approx. 347 sq ft (32 sq m)
- - EPC: C

# Floorplan

sq ft | sq m

Approx. gross internal area  
347 Sq.Ft. / 32.2 Sq.M.



**SECOND FLOOR**

All measurements are approximate and for illustration purposes only as defined by the RICS Code of Measuring Practice © 2012. Dowling Jones Design www.dowlingjones.com 020 7610 9913

Chelsea  
2 Cale Street,  
London SW3 3QU  
+4420 7399 5010  
lettingschelsea@eu.jll.com

*Urban living, your way.*

[jll.co.uk/residential](http://jll.co.uk/residential)

© 2019 Jones Lang LaSalle IP, Inc. All rights reserved. All information contained herein is from sources deemed reliable; however, no representation or warranty is made to the accuracy thereof.

