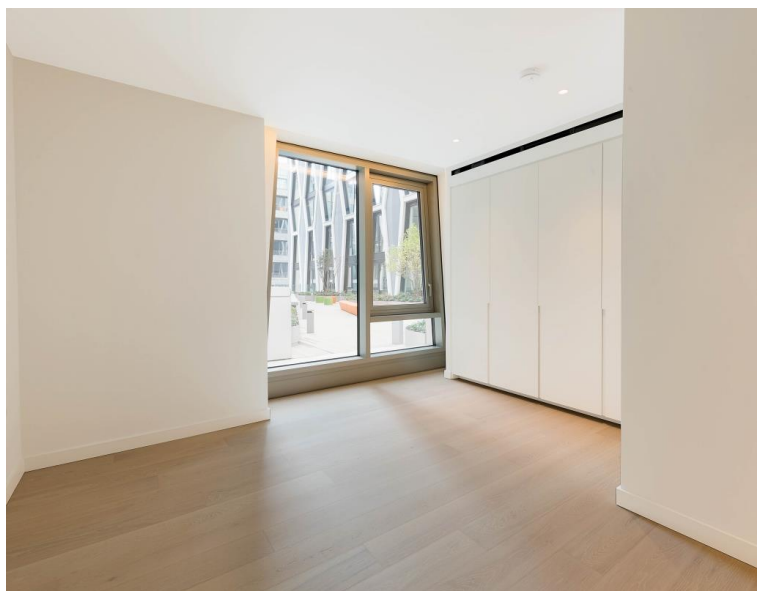
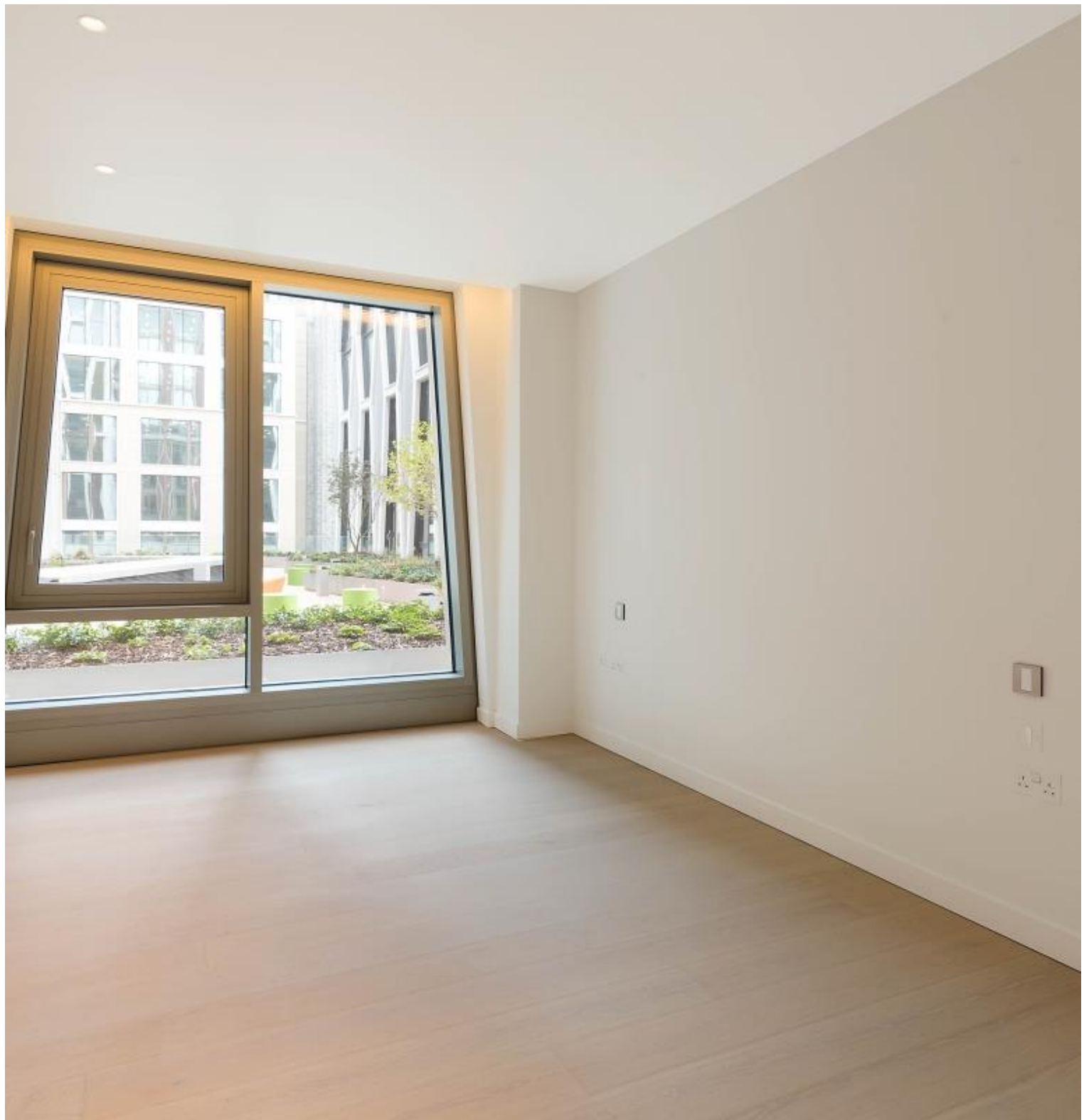
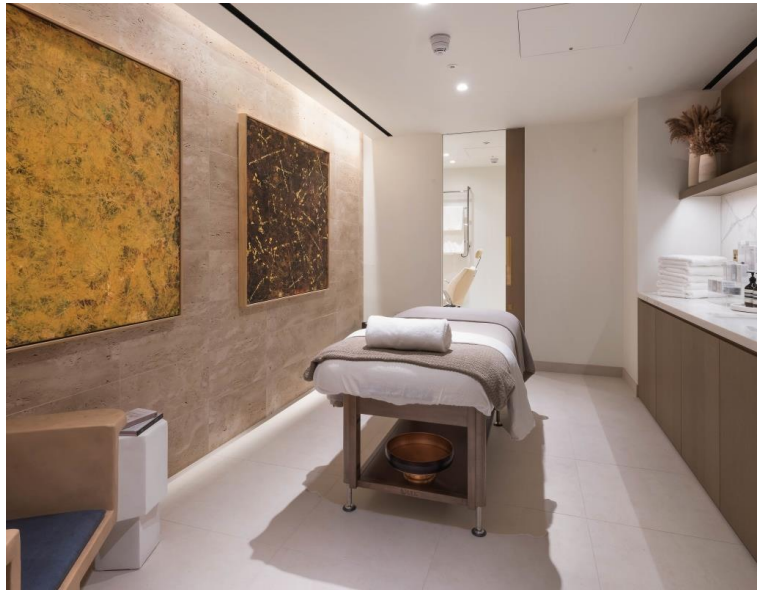
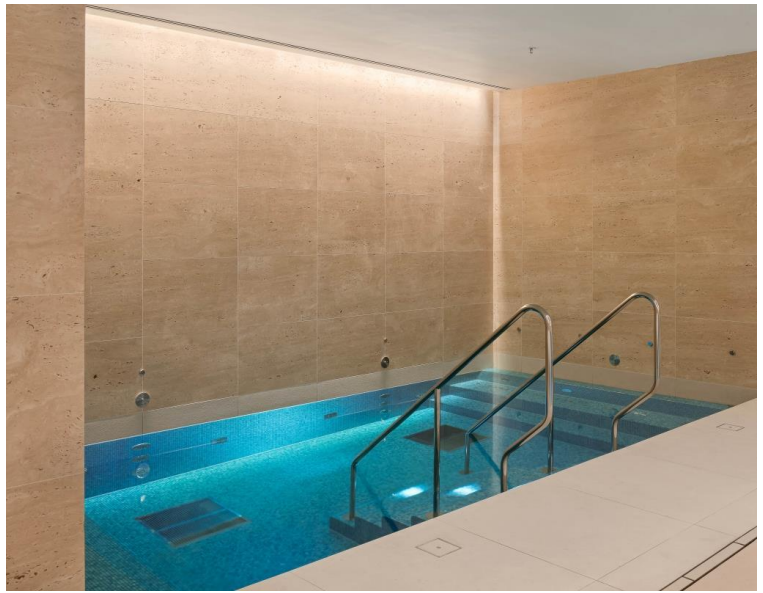


Broadway, London SW1H

Price £2,300 per week - Furnished,
Unfurnished







Description

This two bedroom apartment offers a contemporary interior living space which is flooded with natural light through the unique diamond window frame. The principle rooms have 2.7m floor to ceiling height for a spacious feel, and there is Oak flooring that runs throughout the apartment. The kitchen is designed with integrated Gaggenau and Miele appliances as well as Bardiglio Italian marble worktop finishes. There is plenty of fitted storage in the hallway, inclusive of separate washing and drying machines and the bedrooms have fitted wardrobes too. The bathrooms feature an Italian marble finish, and Corian bath and basin in each of the bathrooms. The apartment benefits from underfloor heating and comfort cooling zoned to principal rooms which can be controlled using a smart panel. Additionally, there are communal gardens connecting each tower on the fourth floor that each resident has access to, as well as rubbish shoots located on each floor for easy waste disposal. The apartment can come on a furnished / unfurnished basis and will be professionally managed by JLL for the duration of any tenancy.

The development benefits from a number of resident facilities such as meeting rooms, games room and screening room. There is a spa which offers two wellness and treatment rooms, a 25m heated indoor pool, a vitality pool, steam room, sauna, g

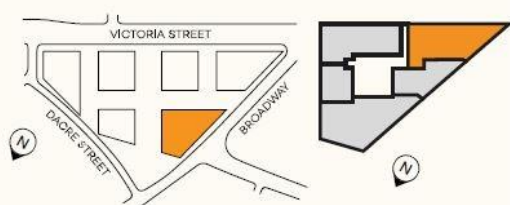
- - 24-hour concierge
- - Gym
- - Pool/Sauna/Steam room
- - Communal gardens
- - Italian marble countertop finishes
- - Underfloor heating and comfort cooling

Floorplan

sq ft | sq m

SANCY WEST SW 4.4

- 2 bedroom apartment
- 4th floor
- 129 sq.m / 1,390 sq.ft



LIVING/DINING/KITCHEN	11.1m x 7.7m	36' 5" x 25' 2"
MASTER BEDROOM	5.1m x 4.8m	16' 8" x 15' 11"
MASTER ENSUITE	2.6m x 1.5m	8' 6" x 4' 11"
BEDROOM 2	5.1m x 3.8m	16' 8" x 12' 6"
SHOWER ROOM	3.1m x 1.8m	10' 4" x 5' 11"
CEILING HEIGHT	2.7m	

DISCLAIMER: Not to scale. All areas are approximate only and you should check with your sales consultant regarding the floorplan and square footage. Computer generated images and predicted views are indicative only. Plans and descriptions are for guidance only and are subject to change.

NORTHACRE
LONDON

THE BROADWAY
WESTMINSTER



Knightsbridge
174 Brompton Road,
London SW3 1HP
+4420 7306 1600
lettingsknightsbridge@eu.jll.co

Urban living, your way.

jll.co.uk/residential

© 2019 Jones Lang LaSalle IP, Inc. All rights reserved. All information contained herein is from sources deemed reliable; however, no representation or warranty is made to the accuracy thereof.

