



Kidbrooke Park Road, London SE3

Guide price £420,000 Leasehold







Description

A spectacular one bedroom apartment on the 5th floor in the newest phase of the Kidbrooke Village development. Located only moments from Kidbrooke mainline rail station and the local amenities.

This stunning apartment offers an abundance of natural light, is spacious throughout and is finished to a high standard. The property briefly comprises entrance hallway with large storage cupboard, one bedroom, modern family bathroom, open plan reception room with dining area leading to a kitchen with a range of integrated appliances including dishwasher.

The property has access to a residents gym and no onward chain.

Early viewings are highly recommended.

- 1 Bedroom
- 1 Bathroom
- Balcony
- 5th Floor modern apartment
- Approx. 567 sq ft (52.63 sq m)
- Beautifully presented throughout
- Modern development
- Resident's gym
- Kidbrooke mainline rail station
- EPC: B

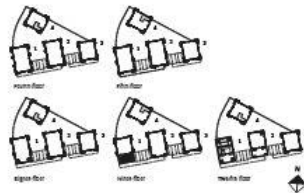
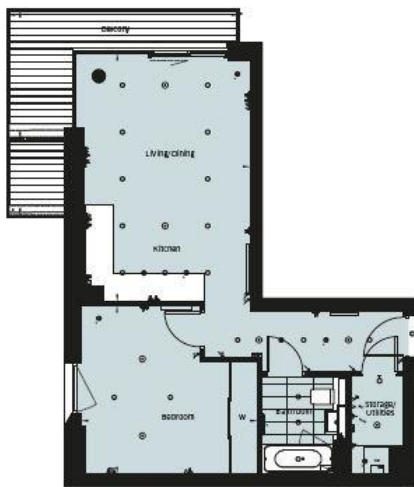
Floorplan

655 sq ft | 61 sq m

THE SQUARE ONE BEDROOM

4th, 5th, 8th, 9th & 12th Floors

Total Area	52.63 SQ M	567 SQ FT
Living/Dining/Kitchen	5908mm x 3905mm	19' 10" x 12' 10"
Bedroom	4130mm x 3868mm	13' 7" x 12' 8"
Balcony	8.15 sq m	88 sq ft
Balcony	10.56 sq m	114 sq ft



Tower 4 Plot Numbers
4.4.2, 4.5.1, 4.8.2, 4.9.1, 4.12.2

- shower room
- living/dining area
- kitchen
- balcony
- bedroom
- bathroom
- storage
- wardrobe
- kitchen
- living/dining area
- bedroom
- bathroom
- storage
- wardrobe

Floorplans shown for The Square are for approximate measurements only. Exact layouts and sizes may vary. All measurements may vary within a tolerance of 5%. The dimensions are not intended to be used for carpet size, appliance size or items of furniture.

THE SQUARE ONE BEDROOM

6th & 10th Floors

Total Area	52.62 SQ M	566 SQ FT
Living/Dining/Kitchen	5908mm x 4090mm	19' 5" x 13' 2"
Bedroom	4130mm x 3868mm	13' 7" x 12' 8"
Balcony	10.56 sq m	114 sq ft



Tower 4 Plot Numbers
4.6.1, 4.10.1

- shower room
- living/dining area
- kitchen
- balcony
- bedroom
- bathroom
- storage
- wardrobe
- kitchen
- living/dining area
- bedroom
- bathroom
- storage
- wardrobe

Floorplans shown for The Square are for approximate measurements only. Exact layouts and sizes may vary. All measurements may vary within a tolerance of 5%. The dimensions are not intended to be used for carpet size, appliance size or items of furniture.

Greenwich
22 College Approach,
London SE10 9HY
02088589986
lettingsgreenwich@eu.jll.com

Urban living, your way.

jll.co.uk/residential

© 2019 Jones Lang LaSalle IP, Inc. All rights reserved. All information contained herein is from sources deemed reliable; however, no representation or warranty is made to the accuracy thereof.

