

**Brill Place, London NW1**  
Price £1,615 per week - Furnished







## Description

Occupying the 19th floor as part of the 'Skyline' collection, this apartment offers spacious open plan living, perfect for entertaining. Entering the open plan living area there is a fully fitted kitchen with an island and breakfast bar, a dining area and a reception area which opens out onto the winter balcony which offers unrestricted views across London. The principal bedroom has large built-in storage and an en-suite with walk in shower. There is a further double bedroom and family bathroom. Both bedrooms lead onto a second winter garden which also offer unrestricted views of London. The apartment has oak wood flooring throughout and is fully furnished.

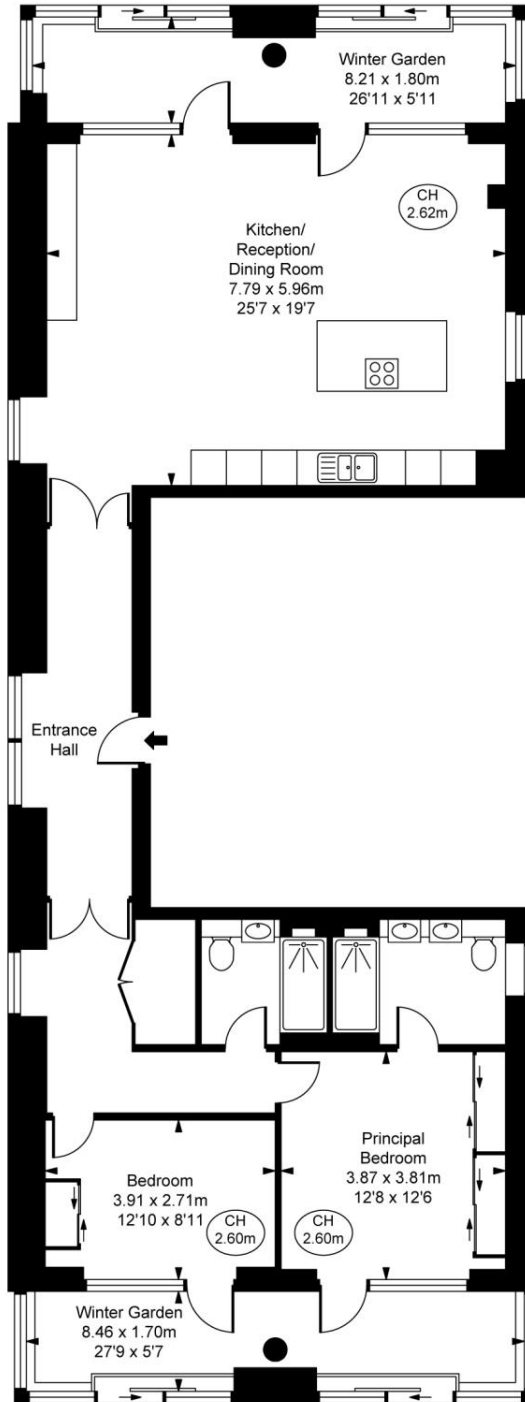
Designed by award-winning architects Stiff + Trevillion and inspired by the linear forms and materials of the railway, this is a building that captures the area's forward-looking spirit and iconic industrial past.

Rent is payable on a monthly basis and you may be required to pay more than a month's rent in advance, depending on your circumstances. You will be required to pay a 1 week holding deposit following a successful offer. Utility bills, council tax, telephone line and broadband are not included in the rent. As well as paying the rent, you may also be required to make some additional permitted payments. If your tenancy does not q

- Skyline Collection
- Measuring 138sqm / 1487sqft
- 19th Floor
- Dual Aspect Views Across London
- Two Winter Gardens
- Open-Plan Living
- Oak Flooring
- Furnished
- Floor to Ceiling Windows
- Close to Kings Cross / St. Pancras Stations

# Floorplan

1,487 sq ft | 138 sq m



## Grand Central Apartments, NW1

Approximate Gross Internal Area  
138.10 sq m / 1,487 sq ft  
(Including Winter Garden  
27.92 sq m / 301 sq ft)

( CH = Ceiling Heights )



Nineteenth Floor

This plan is not to scale. It is for guidance and not for valuation purposes.  
All measurements and areas are approximate only, and have been prepared in accordance with the current edition of the RICS Code of Measuring Practice.  
© Fulham Performance.

Mayfair and Marylebone  
13a St George Street,  
London W1S 2FQ  
+44 207 399 5550  
mayfair@jll.com

*Urban living, your way.*

[jll.co.uk/residential](http://jll.co.uk/residential)

© 2019 Jones Lang LaSalle IP, Inc. All rights reserved. All information contained herein is from sources deemed reliable; however, no representation or warranty is made to the accuracy thereof.

