



Brill Place, London NW1
Price £875 per week - Furnished







Description

Secure your two-bedroom apartment within Grand Central now. Brand new two-bedroom apartments available to reserve ahead of completion.

Each apartment is finished to the highest standard and compromises and open plan living space, with a stylish and fully integrated kitchen, living area with floor to ceiling windows, two spacious bedrooms with fitted wardrobes, master bedroom with en-suite and a further contemporary bathroom suite with bath and overhead rainfall shower. Each apartment has a private balcony.

Designed by award-winning architects Stiff + Trevillion and inspired by the linear forms and materials of the railway, this is a building that captures the area's forward-looking spirit and iconic industrial past.

Photos are for illustrative purposes only, video are available upon request. Final move dates are subject to completion of each individual property.

As well as paying the rent, you may also be required to make some additional permitted payments. If your tenancy does not qualify as an AST, additional fees may apply. Please visit jll.co.

- Brand New
- 1st Floor
- Private Balcony
- Concierge Service
- Open-Plan Living
- Wooden Flooring
- Furnished
- Floor to Ceiling Windows
- Close to Kings Cross / St. Pancras Stations

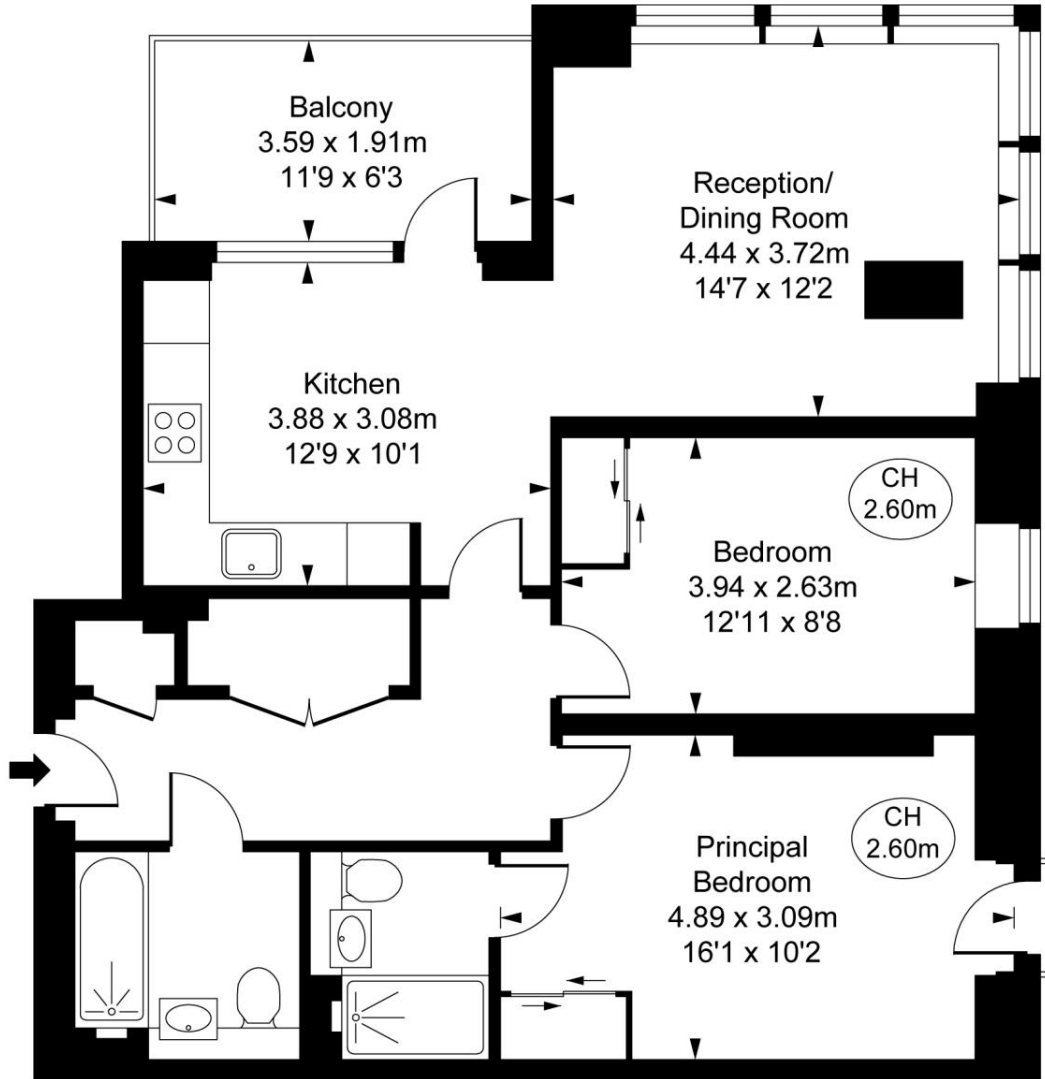
Floorplan

787 sq ft | 73 sq m

Grand Central Apartments, Brill Place, NW1

Approximate Gross Internal Area
73.13 sq m / 787 sq ft

(CH = Ceiling Heights)



First Floor

This plan is not to scale. It is for guidance and not for valuation purposes.
All measurements and areas are approximate only, and have been prepared in accordance with the current edition of the RICS Code of Measuring Practice.
© Fulham Performance

Mayfair and Marylebone
13a St George Street,
London W1S 2FQ
+44 207 399 5550
mayfair@jll.com

Urban living, your way.

jll.co.uk/residential

© 2019 Jones Lang LaSalle IP, Inc. All rights reserved. All information contained herein is from sources deemed reliable; however, no representation or warranty is made to the accuracy thereof.

