



Sedding Street, London SW1X

Price £850 per week - Unfurnished







Description

A unique, immaculately presented studio apartment situated just off Sloane Square. The apartment is bright and modern throughout and comprises a mezzanine bedroom area, one shower room, spacious reception area and an open plan kitchen. Sedding Street is located within easy walking distance of the amenities of Sloane Square, Sloane Street and the Kings Road.

Being a Cadogan Estate tenant offers a number of benefits including no administration, referencing or inventory fees, a dedicated 24 hour emergency service, access to the Cadogan Concierge and access to beautiful communal gardens and tennis courts by application.

As well as paying the rent, you may also be required to make permitted payments. Please visit jll.co.uk/fees for details of fees which may be payable when renting a property. If your tenancy does not qualify as an AST, additional fees may apply.

- - Mezzanine bedroom
- - One shower room
- - Reception area
- - Open plan kitchen
- - Ground floor
- - Unfurnished
- - Approx. 575 sq ft (53 sq m)
- - EPC: D

Floorplan

575 sq ft | 53 sq m

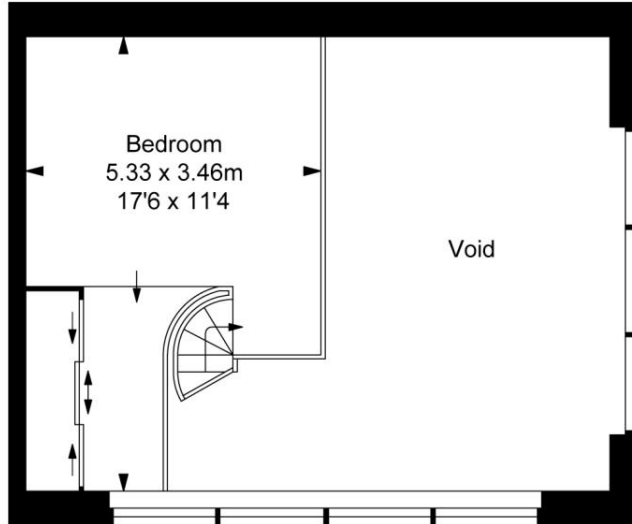
Sedding Studios, Sedding Street, SW1X

Approximate Gross Internal Area
52.80 sq m / 568 sq ft
(Excluding Void)

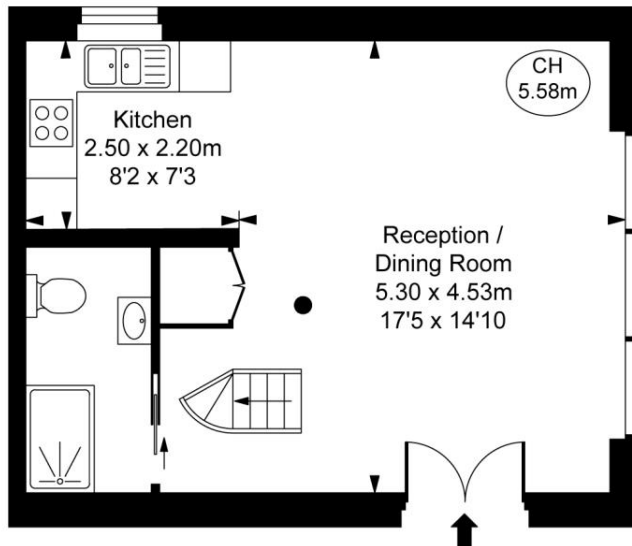


(CH = Ceiling Heights)

First Floor
Approximate Gross Internal Area
15.84 sq m / 171 sq ft



Ground Floor
Approximate Gross Internal Area
36.96 sq m / 398 sq ft



This plan is not to scale. It is for guidance and not for valuation purposes.
All measurements and areas are approximate only, and have been prepared in accordance with the current edition of the RICS Code of Measuring Practice.
© Fulham Performance

Knightsbridge
174 Brompton Road,
London SW3 1HP
+4420 7306 1600
lettingsknightsbridge@eu.jll.co

Urban living, your way.

jll.co.uk/residential

© 2019 Jones Lang LaSalle IP, Inc. All rights reserved. All information contained herein is from sources deemed reliable; however, no representation or warranty is made to the accuracy thereof.

