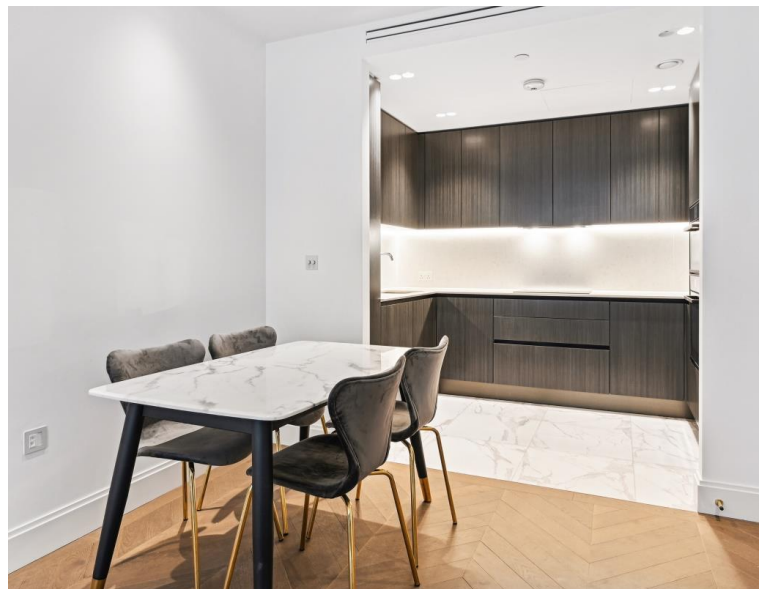




Millbank Quarter, London SW1P

Price £1,100 per week - Furnished, Part
Furnished







Description

This apartment is set on the 1st floor and offers open living with a bright and spacious reception room with an open-plan fully fitted kitchen, a principal bedroom with dressing area and ensuite bathroom, a second double bedroom and a family bathroom. The apartment is offered furnished and has wooden flooring throughout the hallway and reception with carpet in the bedrooms for extra comfort.

Milbank Quarter provides residents with the highest quality leisure facilities, including a 24-hour concierge, a state-of-the-art gym, luxurious swimming pool with spa and treatment room, private cinema screening room, meeting rooms.

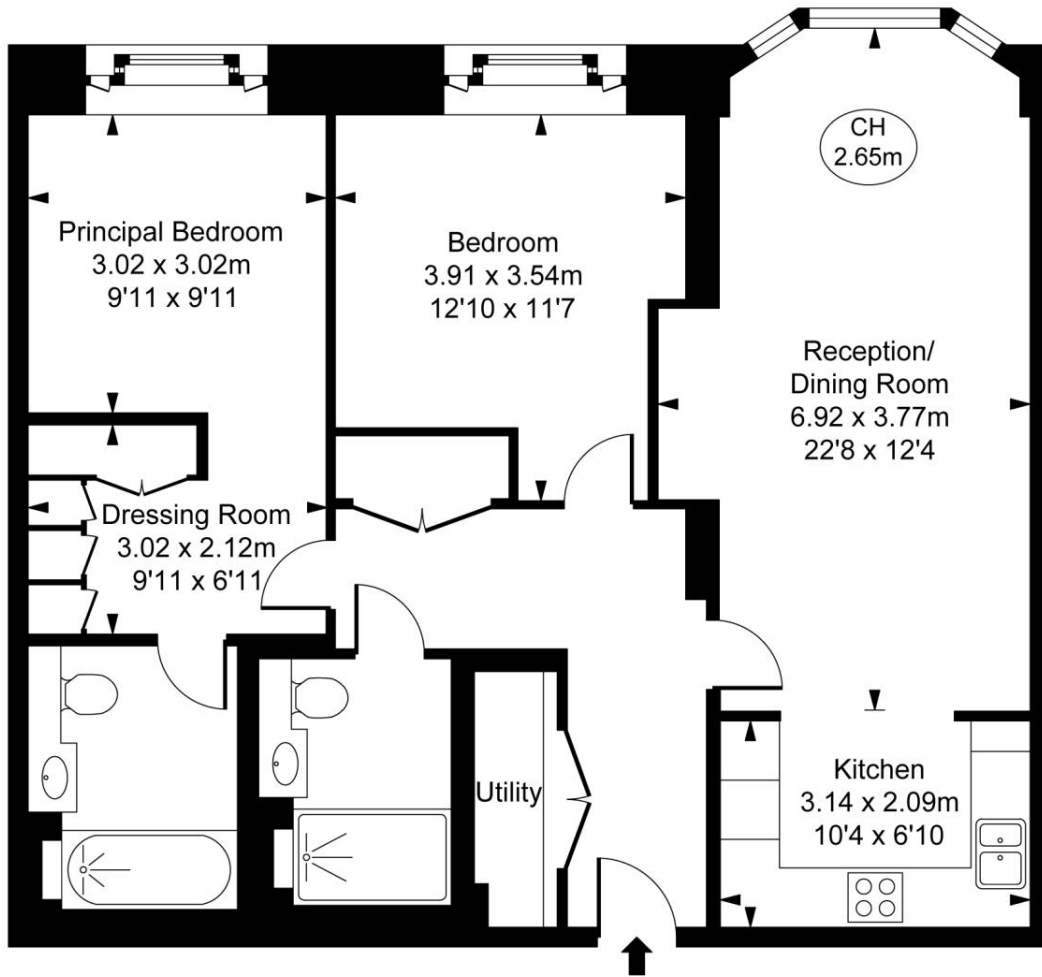
Living in Westminster also puts you within walking distance of three Royal Parks, upscale shopping at Knightsbridge, Mayfair's Michelin-starred restaurants and the theatres of the West End. Millbank itself is a world-renowned centre of art, home of the Tate Britain gallery and Chelsea College of Art and Design. Nearby educational institutions include the historic Westminster School and Francis Holland School, Imperial College London, King's College London and the London School of Economics. Westminster Station is only a mere 0.5 mile walk with St James's Park 0.6 miles away and Pimlico station 0.7 miles.

- Luxury Development
- 24hr Concierge Service
- Open-plan Reception Room
- Residents Gym
- Swimming pool
- Spa
- Screening Room
- Furnished
- Council tax: Band G
- Deposit amount: £6,600.00

Floorplan

914 sq ft | 85 sq m

Millbank,
Westminster, SW1P
Approximate Gross Internal Area
84.90 sq m / 914 sq ft
(CH = Ceiling Heights)



First Floor

This plan is not to scale. It is for guidance and not for valuation purposes.
All measurements and areas are approximate only, and have been prepared in accordance with the current edition of the RICS Code of Measuring Practice.
© Fulham Performance

Mayfair and Marylebone
13a St George Street,
London W1S 2FQ
+44 207 399 5550
mayfair@jll.com

Urban living, your way.

jll.co.uk/residential

© 2019 Jones Lang LaSalle IP, Inc. All rights reserved. All information contained herein is from sources deemed reliable; however, no representation or warranty is made to the accuracy thereof.

