



## Beadon Road, London W6

Asking price £1,650,000 Leasehold









## Description

A bright and spacious three bedroom apartment within a luxury development in Hammersmith. Arranged over the thirteenth floor of Marquis House with excellent skyline views, the apartment benefits from wood floors, state of the art appliances, use of the onsite gym, 24 hour concierge and communal gardens. Property comprises three spacious double bedrooms (one en-suite), 2 bathrooms, living room leading to private balcony and an open plan kitchen.

Residents will benefit from beautiful landscaped gardens, interior designed entrance foyer and private residents gym.

Sovereign Court is perfectly located for access to Hammersmith Broadway servicing Piccadilly, District, Hammersmith and City and Circle lines.

- 3 Bedrooms
- 2 Bathrooms
- Private balcony
- 24 Hour concierge
- Gym and communal gardens
- Approx 1255 sq ft (117 sq m)
- EPC: B

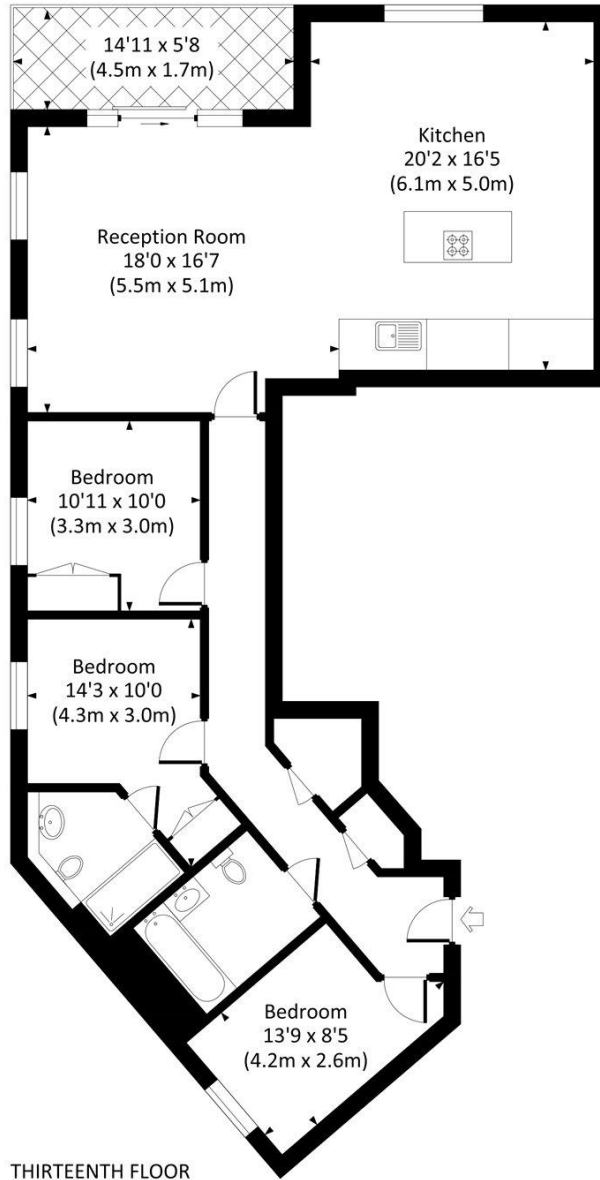



# Floorplan

1,255 sq ft | 117 sq m

## BEADON ROAD, W6

Approx. gross internal area  
1255 Sq Ft. / 116.6 Sq M.



 All measurements have been made in accordance with RICS code of Measuring Practice which are approximate only and only for illustrative purposes. For the avoidance of doubt, Dowling Jones Design shall not be liable for any reliance on these measurements. © 2018 www.dowlingjones.com 020 7610 9933

Kensington  
387 Kensington High Street,  
London W14 8QA  
+4420 7087 5696  
lettingskensington@eu.jll.com

*Urban living, your way.*

[jll.co.uk/residential](http://jll.co.uk/residential)

© 2019 Jones Lang LaSalle IP, Inc. All rights reserved. All information contained herein is from sources deemed reliable; however, no representation or warranty is made to the accuracy thereof.

