



Park Street, Fulham SW6

Guide price £16,000,000 Leasehold







Description

Introducing this incredibly rare and unique Penthouse with one of the best views in London. Set over the top two floors of Chelsea Creek Tower and comprising approx. 5,541 sq ft of internal space, panoramic views across London and a generously sized roof terrace with dining area and hot tub.

This beautifully presented Penthouse has been finished to the highest of standards throughout and benefits from spacious living areas with floor to ceiling windows allowing for an abundance of natural light. All bedrooms come with en suite bathrooms and walk-in wardrobes. The staff area offers a separate kitchen, utility room and bedroom en suite. (The property offers separate entrances for residence and staff).

Parking is available with a rare lockable garage (large enough for two cars) and located within the main underground parking at the tower. Further facilities include 24-hour concierge, gym, spa and indoor pool.

This desirable Chelsea Creek development is located near Chelsea Harbour, moments from the River Thames and is considered one of London's most prestigious dockside developments.

- 5 Bedroom
- 5 Bathroom
- Penthouse
- Huge outside space
- Hot Tub
- Garage
- Approx. 5541 sq ft (515 sqm) internal space
- EPC C

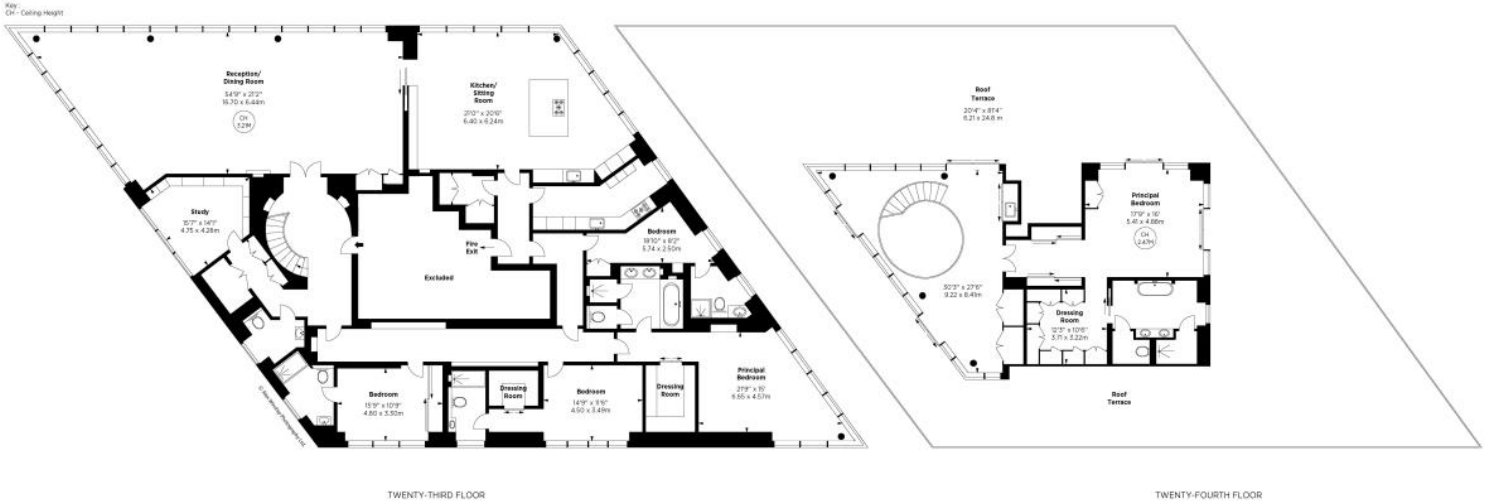
Floorplan

5,441 sq ft | 506 sq m

Chelsea Creek Tower, SW6

APPROX. GROSS INTERNAL AREA *
5541 Sq Ft - 514.83 Sq M

This floorplan is for GUIDANCE ONLY and NOT FOR VALUATION purposes.



ALEX WINSHIP
Architect

Chelsea
2 Cale Street,
London SW3 3QU
+4420 7399 5010
lettingschelsea@eu.jll.com

Urban living, your way.

jll.co.uk/residential

© 2019 Jones Lang LaSalle IP, Inc. All rights reserved. All information contained herein is from sources deemed reliable; however, no representation or warranty is made to the accuracy thereof.

