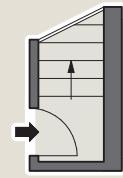


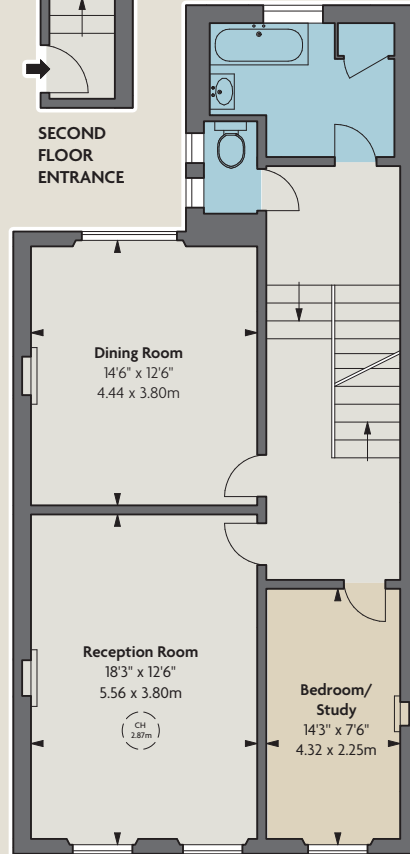
# Gledhow Gardens

SOUTH KENSINGTON SW5

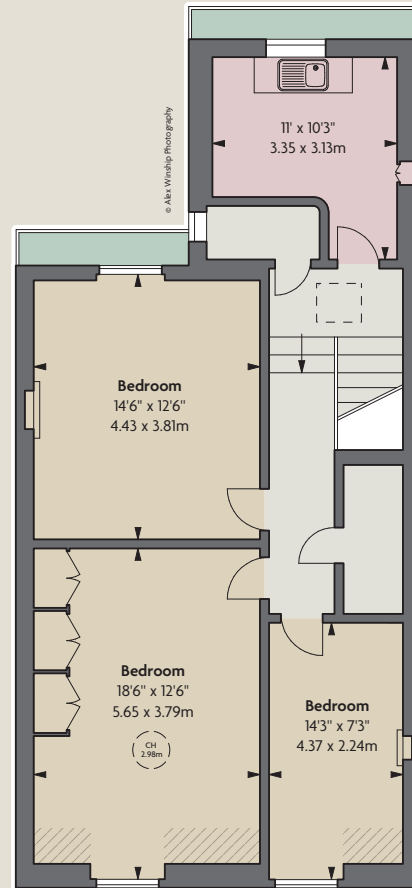




SECOND FLOOR ENTRANCE



THIRD FLOOR



FOURTH FLOOR

APPROXIMATE GROSS INTERNAL AREA  
1,624 sq ft / 150.87 sq m



An unmodernised third and fourth floor maisonette (no lift) with huge potential to create a very comfortable family flat. It has the added benefit of garden views both at the front and rear of the building.

Gledhow Gardens is located just north of The Old Brompton Road and near to Gloucester Road tube station. It has easy access out to the West via the M4 and is situated in a very tranquil position mid-way between Earls Court and Gloucester Road.

#### ACCOMMODATION

- 3/4 Bedrooms
- Bathroom
- Cloakroom
- Kitchen
- Spacious entrance hall and landing
- 2/3 Reception rooms

#### TERMS

Guide Price: £1,450,000

Tenure: Leasehold, 977 years remaining (999 years from 08/10/2001)

Service Charge: 20% of outgoings.

Currently £3,990.80 pa plus £2,000 pa into a reserve fund

Ground Rent: Peppercorn

Council Tax: Band G

EPC: G