



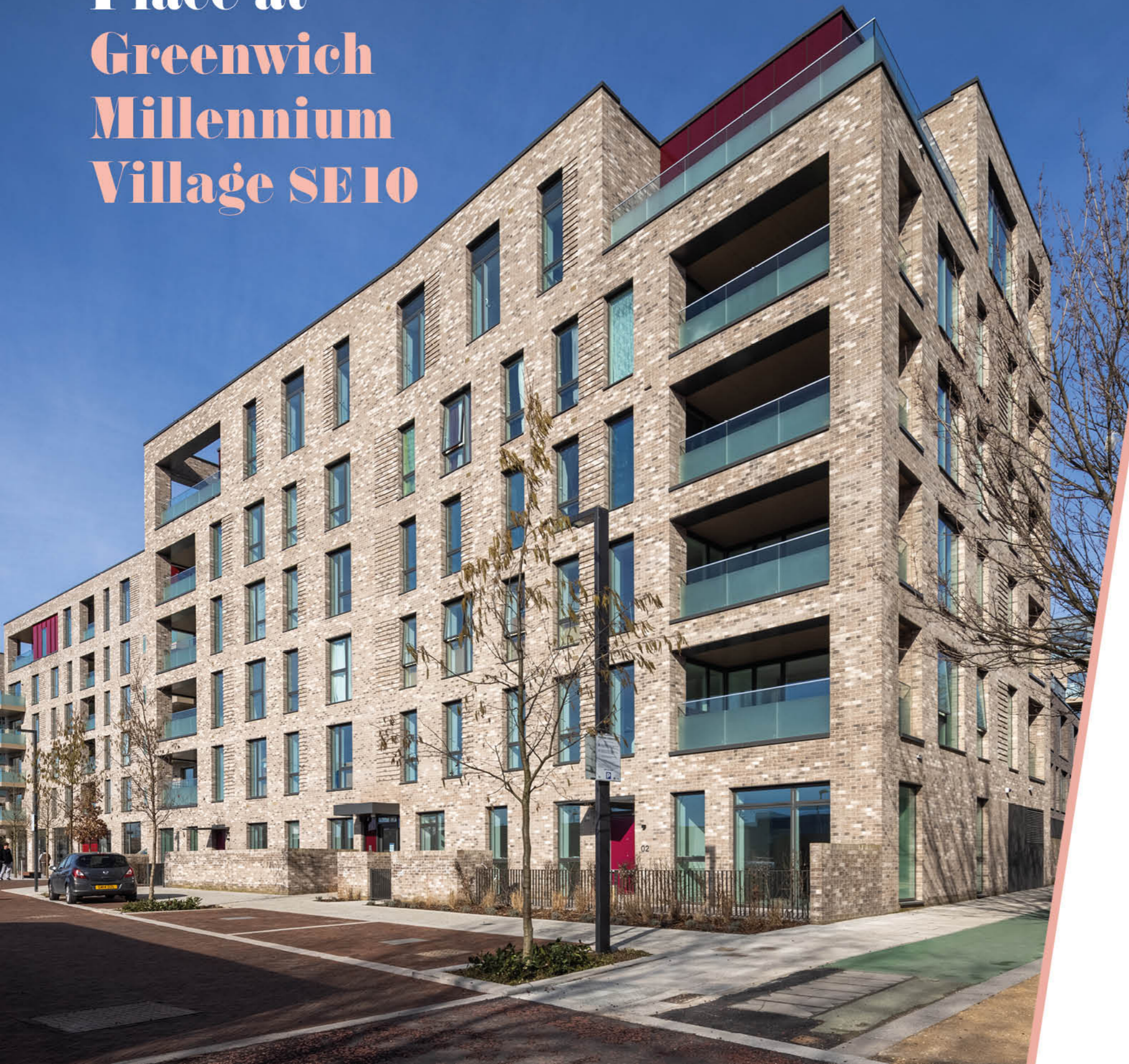
Parkside Place at Greenwich Millennium Village SE10

A collection of **one and two
bedroom shared ownership
apartments**

by **One Housing**

 Part of
Riverside

Parkside Place at Greenwich Millennium Village SE10



The Greenwich Peninsula will always be famous for the Millennium celebrations and the O2 Centre. Now it has the Parkside Place Greenwich Millennium Village too, a collection of stunning one and two bedroom apartments, all available for shared ownership. With an ecology park on your doorstep and the ExCel Centre across the river, this is the perfect place to enjoy Greenwich's contemporary lifestyle.

A village designed around you

Parkside Place Greenwich Millennium Village offers shops, open spaces and play areas, medical facilities and schools, creating a thriving new community for London. The bold architecture and design has created homes that let the light flood in and provide a sense of freedom and space. Each kitchen is streamlined with integrated appliances, and each property benefits from an outside space. The neutral décor of each apartment invites you to make your design mark on your new home.

Every building in the Village has been built to the latest eco-standards (saving you money on your fuel bills) and offers private outside spaces where you can relax.

This is a location where you can enjoy the best of London with everything you need close at hand.

**Modern urban
living in an iconic,
historical, riverside
location**



Greenwich Living



Greenwich is a beautiful, historic part of town and there's so much to see and do without even leaving the peninsula. More than just a music and sports venue, the O2 offers a wonderful choice of shops, restaurants and bars, not to mention a thrilling rooftop climb. There's also a peninsula yacht club, golf driving range, park that's perfect for picnics, raised path along the river full of artworks and events, together with the teeming wetlands and meadows of the ecology centre.

Greenwich Park

The park offers some of the most famous views in London – enjoyed by the whole world during the 2012 games – and is also home to the historic Royal Observatory and Meridian Line which originally made Greenwich a household name across the globe.

The grand buildings of the Old Royal Naval Cottage are an imposing way for the town to meet the river and, behind, you can explore our naval heritage in the National Maritime Museum and the remarkable art and history of Queen Anne's House. There's also the Cutty Sark to climb aboard and discover.

Head into town

Greenwich offers a highly regarded theatre, choice of cinemas, excellent choice of pubs and a thriving market, open all week, and filled with crafts and collectables. It's well catered for, with a range of tempting food stalls when you feel peckish.

Shopping / Retail Park

Greenwich Shopping Park is the dominant Out of Town retail offer on Bugsby Way, a convenient and friendly shopping destination. It offers a high quality diverse range of retailers including Lidl, Wilko, Hobbycraft, Boots, Decathlon, JD Sports and Starbucks. Surrounding occupiers include Sainsbury's, M&S, Primark, Next and Mothercare.



UNDERGROUND		North Greenwich Station 1.0 mile	Canary Wharf Station 2 mins	Stratford Station 8 mins	Bank Station 9 mins	Shoreditch High Street 16 mins	Embankment Station 19 mins	King's Cross St. Pancras 28 mins
CYCLE		O2 Arena 3 mins	North Greenwich Station 4 mins	Cutty Sark 6 mins	Greenwich Park 7 mins	Charlton Station 8 mins	Woolwich Common 12 mins	Canary Wharf 18 mins
RIVER BUS		North Greenwich & Pier 1.1 mile	Canary Wharf 12 mins	Tower Bridge Pier 20 mins	London Bridge 25 mins	Waterloo Pier 35 mins	Embankment Pier 42 mins	

The rest of London is round the bend

Whether you work in Canary Wharf or the City, South London or the West End, this is a great base. From nearby North Greenwich underground station (Jubilee Line) which is a 19 minute walk, Canary Wharf is just a few stops away, and Bank can be reached in around 10 minutes.

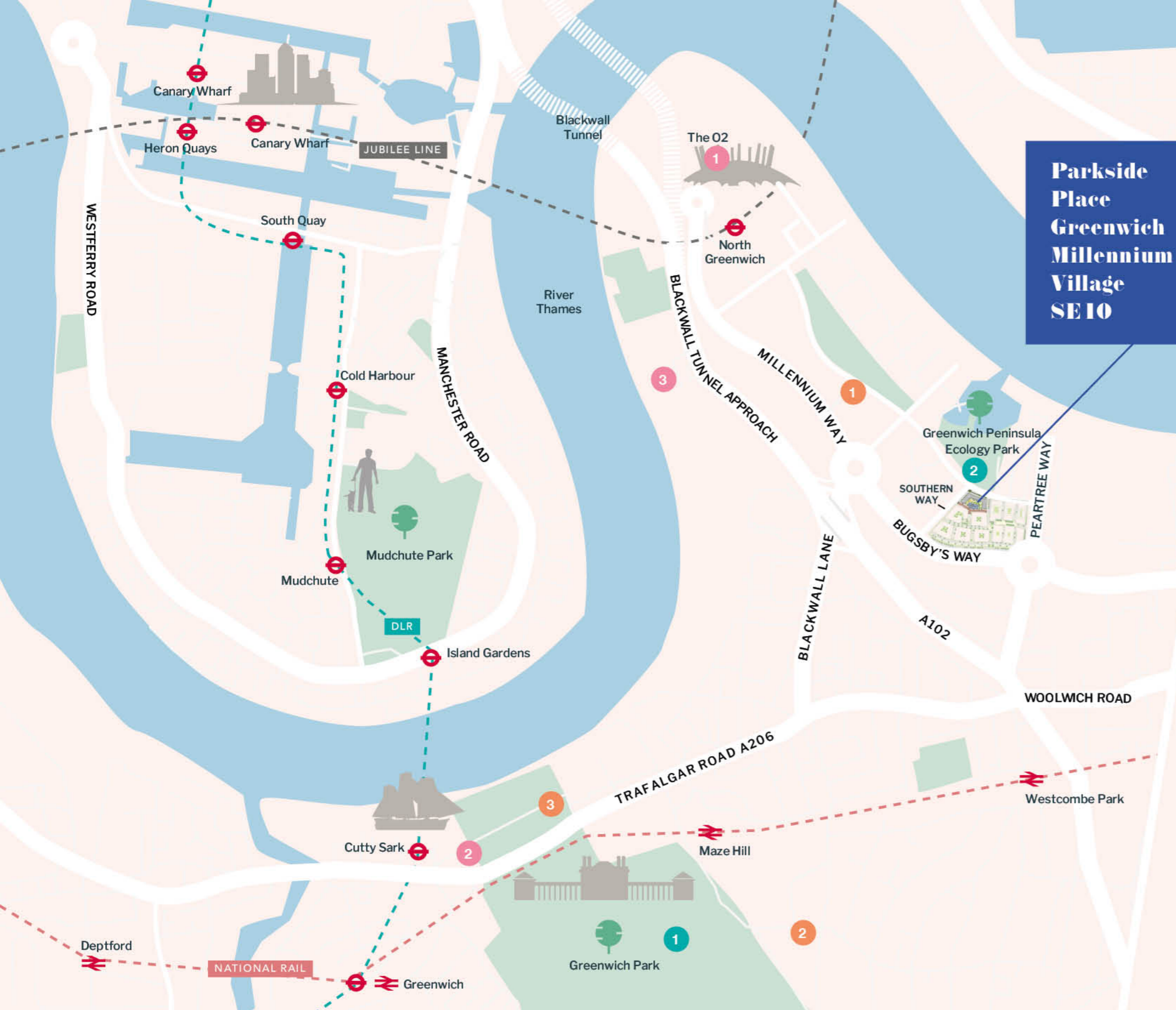
Take to the water

But there are also far more attractive ways to travel. The River Bus from Greenwich Pier will have you docking at Embankment in 42 minutes while the Emirates Air Line offers stunning views as you cross the river by cable car. This is a great part of London to own a bike, with a whole range of cycle paths in the area. Beware of the hill though.

Surrounding areas

With excellent education options, from pre-nursery right up to a local university, a choice of beautiful outside spaces, a fabulous range of shops, restaurants and entertainment, this is a great part of London to choose for your next home. You'd be round the bend to live anywhere else.





On the map

Entertainment

- 1 The O2 Centre is just a 3-minute drive or bus away, offering world class entertainment as well as hosting a wide range of sporting and music events. It's a venue to over 20 bars and restaurants in addition to a bowling alley and a cinema, and is also accessible by the Emirates Air Line, a cable car over the River Thames with a stunning vista of the London skyline.
- 2 Greenwich Market, home to over 120 established and diverse food and art stalls at any one time, all right around the corner.
- 3 Greenwich Peninsula Golf Range, one of London's premier driving ranges with views over the entire hub of the city only a 5-minute walk away.

Education

- 1 Parkside Place Greenwich Millennium Village has its own nursery and primary school, although there are a large number of high ranked ones in the nearby area, all within a 15-minute radius by car.
- 2 In terms of secondary schools, The John Roan, adjacent to Greenwich Park is a very popular secondary school choice for many residents of Greenwich, being one of the oldest and largest state schools in the country, and is only a 10 minute drive away from the development.
- 3 The University of Greenwich is prestigious and very well-established, drawing in students from around the world due to their strong history and links with the rest of the London universities.

Green Spaces

- 1 Greenwich Park, only a 10-minute walk away boasts a total of 183 acres in area overlooking the River Thames. Popular spots inside the park include the Royal Observatory, the National Maritime Museum, the several feature gardens as well as tennis, cricket and boating facilities.
- 2 Greenwich Peninsula Ecology Park, situated right on your doorstep, includes two lakes and hours' worth of walks inside this lush woodland right in the heart of London.



**Parkside
Place at
Greenwich
Millennium
Village
SE10**



Sleek & Modern Specification

General

- Flush solid core internal doors finished in white
- Anodised aluminium ironmongery
- Carpet in all bedrooms
- Karndean vinyl flooring to kitchen, living/dining room and hallways
- Built-in wardrobes to master bedroom
- Audio and visual Door entry system

Kitchen

- Contemporary polar white kitchen units with under-unit lighting
- Grey laminate worktops with matching upstands and stainless steel splashback
- Stainless steel single bowl sink
- Contemporary chrome mixer tap
- Integrated fridge/freezer
- Integrated dishwasher
- Stainless steel oven and hob
- Stainless steel cooker chimney hood



Bathroom

- Ceramic wall and floor tiles to all bath/shower rooms
- Contemporary white sanitaryware
- Chrome plated, water fall ceiling shower with an additional hand-held shower
- Chrome monobloc mixer to wash basin
- Glass shower screen to bath
- Heated chrome towel rail
- Shaver socket
- Mirror fitted above wash basin to full size of aperture

Heating & Electrical

- Washer/dryer contained within service cupboard
- Master phone socket with digital/broadband capability to living room and all bedrooms
- SKY+ capability in living room and bedroom 1
- Low energy downlights to the bathroom and en-suite
- Low energy pendant lighting to living areas
- Smoke alarms

The specification is the anticipated specification but may be subject to change as necessary and without notice. Photograph is indicative of the quality and style of the specification. Specification is not intended to form part of any contract or warranty unless specifically incorporated in writing into the contract.



Site Plan

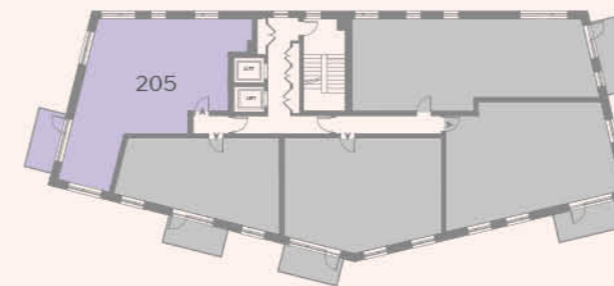


The site plan has been prepared with all due care for the convenience of the intending purchaser. However, the information contained herein is a preliminary guide only. Ground levels and other variances are not shown.

Plot Locator



Block 301

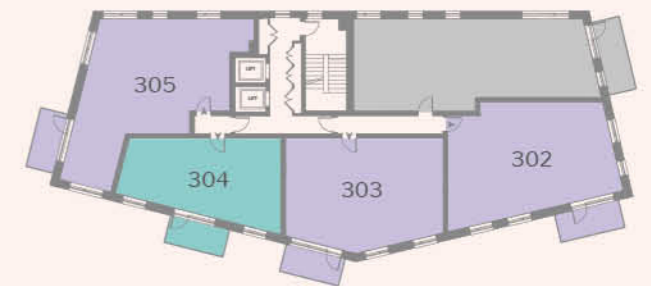


Second Floor

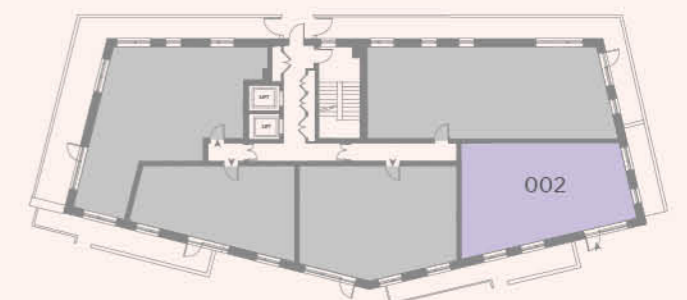
KEY

- One Bedroom apartments
- Two Bedroom apartments

Block 301



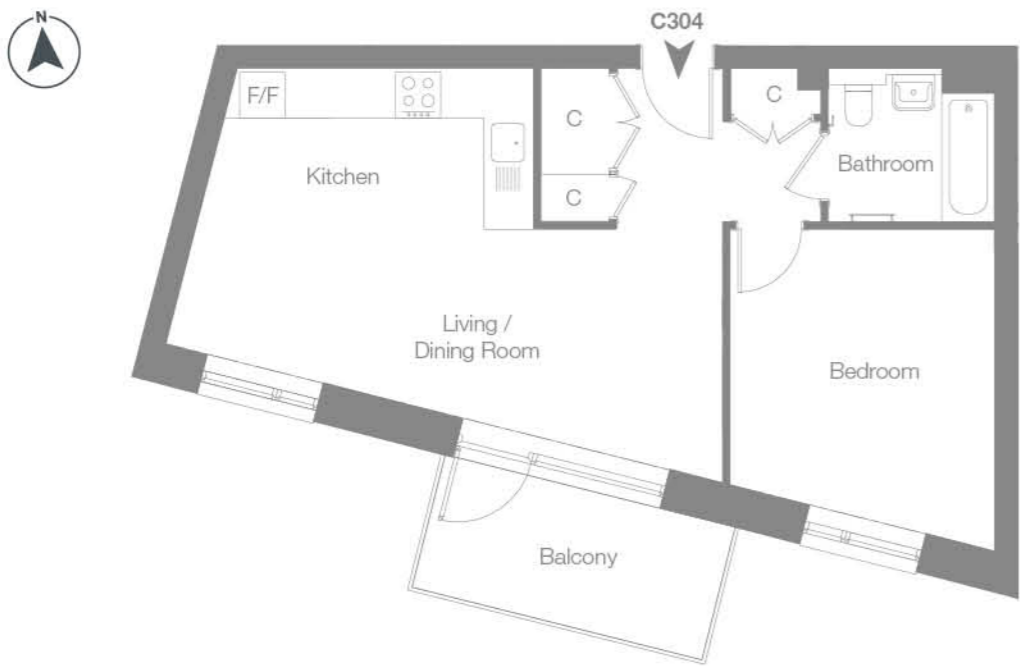
Third Floor



Ground Floor

One Bedroom Apartment

Block 301 | Plot 304 | Third Floor



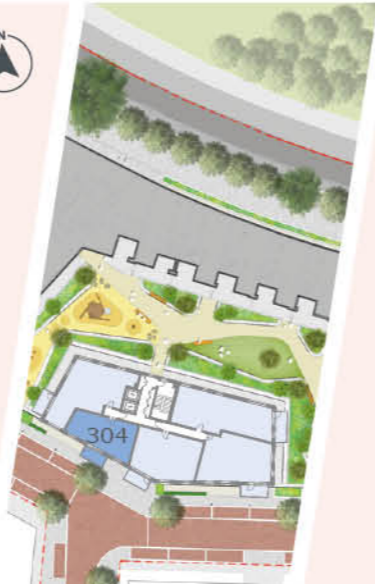
DIMENSIONS

Kitchen / Living / Dining Room	6.90m x 4.39m	22' 7" x 14' 4"
Bedroom	3.71m x 3.50m	12' 2" x 11' 5"
Total Area	54 sq.m.	576 sq.ft.

KEY

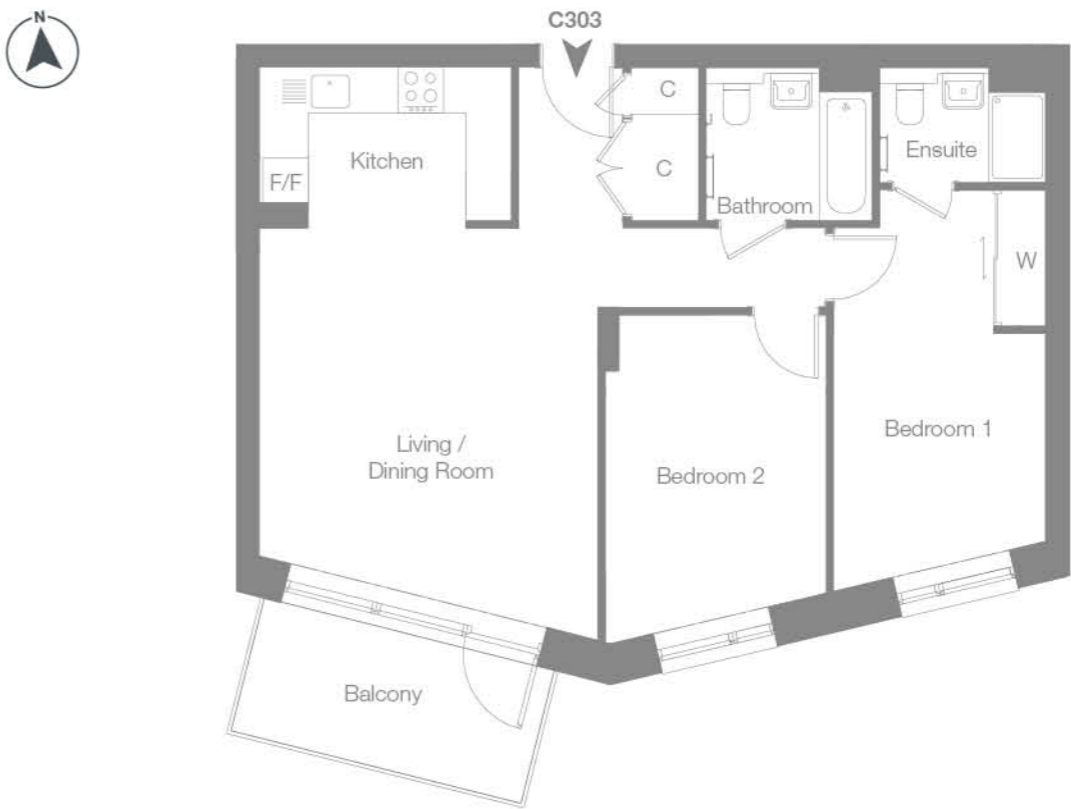
- F/F Fridge/Freezer
- C Cupboard
- B Boiler

Floor plans are not to scale and are indicative only. Location of windows, doors, kitchen units and appliances may differ. Doors may swing in the opposite direction to that shown on selected [apartments/houses]. Dimensions, which are taken from the indicated points of measurement, are for guidance only and are not intended to be used to calculate space for items of furniture. Total areas are provided as gross internal areas and are subject to variance. Please speak to our Sales Consultant for further information.



Two Bedroom Apartment

Block 301 | Plot 303 | Third Floor



DIMENSIONS

Living / Dining Room	4.86m x 4.48m	15' 11" x 14' 8"
Kitchen	3.33m x 2.02m	10' 11" x 6' 7"
Bedroom 1	5.10m x 2.81m	16' 8" x 9' 2"
Bedroom 2	4.00m x 2.91m	13' 1" x 9' 6"
Total Area	73 sq.m.	784 sq.ft.

KEY

- F/F Fridge/Freezer
- C Cupboard
- B Boiler

Floor plans are not to scale and are indicative only. Location of windows, doors, kitchen units and appliances may differ. Doors may swing in the opposite direction to that shown on selected [apartments/houses]. Dimensions, which are taken from the indicated points of measurement, are for guidance only and are not intended to be used to calculate space for items of furniture. Total areas are provided as gross internal areas and are subject to variance. Please speak to our Sales Consultant for further information.



Two Bedroom Apartment

Block 301 | Plot 302 | Third Floor



DIMENSIONS

Kitchen / Living / Dining Room	6.69m x 4.73m	21' 11" x 15' 6"
Bedroom 1	3.10m x 2.83m	10' 2" x 9' 3"
Bedroom 2	3.60m x 3.28m	11' 9" x 10' 9"
Total Area	78 sq.m.	840 sq.ft.

Floor plans are not to scale and are indicative only. Location of windows, doors, kitchen units and appliances may differ. Doors may swing in the opposite direction to that shown on selected [apartments/houses]. Dimensions, which are taken from the indicated points of measurement, are for guidance only and are not intended to be used to calculate space for items of furniture. Total areas are provided as gross internal areas and are subject to variance. Please speak to our Sales Consultant for further information.



KEY

- F/F Fridge/Freezer
- C Cupboard
- B Boiler

Two Bedroom Apartment

Block 301 | Plot 305 | Third Floor
Block 301 | Plot 205 | Second Floor



DIMENSIONS

Living Room	4.28m x 3.51m	14' 0" x 11' 6"
Dining Room	3.49m x 2.97m	11' 5" x 9' 8"
Kitchen	3.34m x 2.46m	10' 11" x 8' 0"
Bedroom 1	4.30m x 3.00m	14' 1" x 9' 10"
Bedroom 2	4.30m x 2.77m	14' 1" x 9' 1"
Total Area	84 sq.m.	900 sq.ft.

Floor plans are not to scale and are indicative only. Location of windows, doors, kitchen units and appliances may differ. Doors may swing in the opposite direction to that shown on selected [apartments/houses]. Dimensions, which are taken from the indicated points of measurement, are for guidance only and are not intended to be used to calculate space for items of furniture. Total areas are provided as gross internal areas and are subject to variance. Please speak to our Sales Consultant for further information.

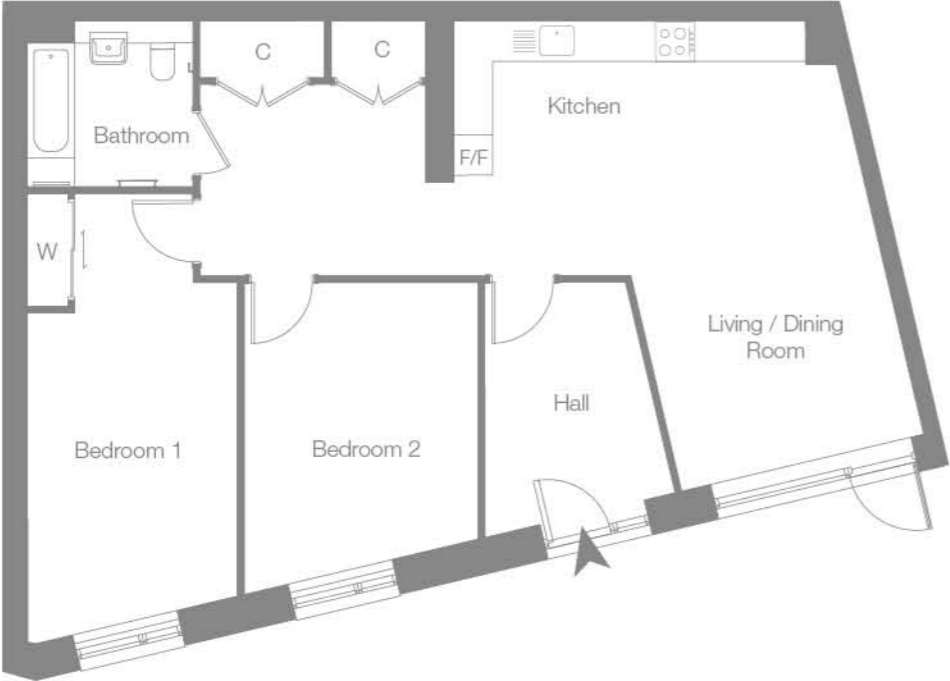


KEY

- F/F Fridge/Freezer
- C Cupboard
- B Boiler

Two Bedroom Apartment

Block 301 | Plot 002 | Ground Floor



DIMENSIONS

Kitchen / Living / Dining Room	6.60m x 3.80m	21' 7" x 12' 5"
Bedroom 1	6.30m x 3.10m	20' 8" x 10' 2"
Bedroom 2	4.20m x 2.90m	13' 9" x 9' 6"
Total Area	74 sq.m.	800 sq.ft.



- KEY**
- F/F Fridge/Freezer
 - C Cupboard
 - B Boiler

Floor plans are not to scale and are indicative only. Location of windows, doors, kitchen units and appliances may differ. Doors may swing in the opposite direction to that shown on selected [apartments/houses]. Dimensions, which are taken from the indicated points of measurement, are for guidance only and are not intended to be used to calculate space for items of furniture. Total areas are provided as gross internal areas and are subject to variance. Please speak to our Sales Consultant for further information.



Parkside Place at Greenwich Millennium Village SE10

by **One Housing**  Part of
Riverside

For more information

020 8821 6425

gmv@onehousing.co.uk

onehousing.co.uk

Marketing Suite Address

Flat 205 McGill House, 3 Needell Road,
London SE10 0WF

The information in this document is indicative and intended to act as a guide only as to the finished product. Accordingly, due to One Housing Group's policy of continuous improvement, the finished product may vary from the information provided. All computer generated images (CGIs) used in this brochure are for illustrative purposes only and are not intended to provide an actual forecast or impression of the measurement, dimensions, layout, placement, context and/or finished finishes of the buildings premises or landscaping within the development, and should not be relied upon as true or accurate. This information does not constitute a contract, or warranty. Dimensions, which are taken from the indicated points of measurement are for guidance only and are not intended to be used to calculate space for items of furniture. Total areas are provided as gross internal areas and are subject to variance. Blackhorse Lane is a marketing name and may not necessarily form part of the approved postal address. All information believed to be correct at the time of going to print. May 2022.

