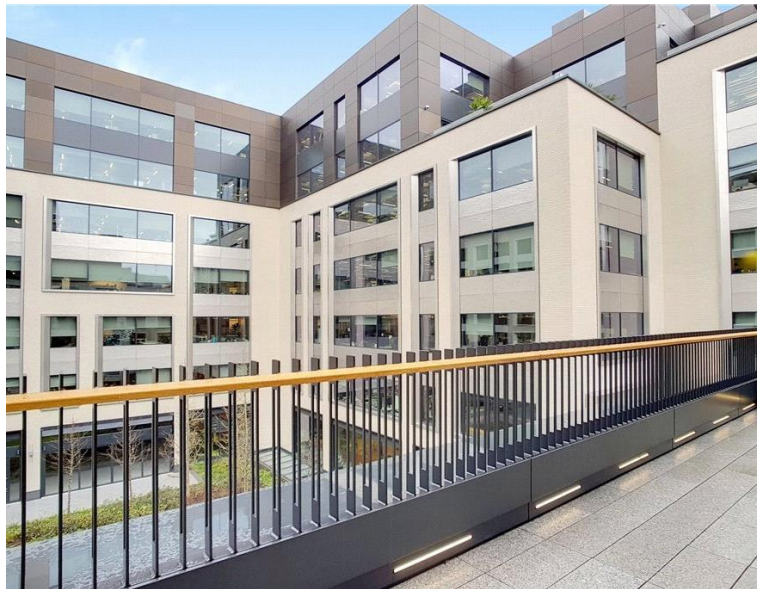
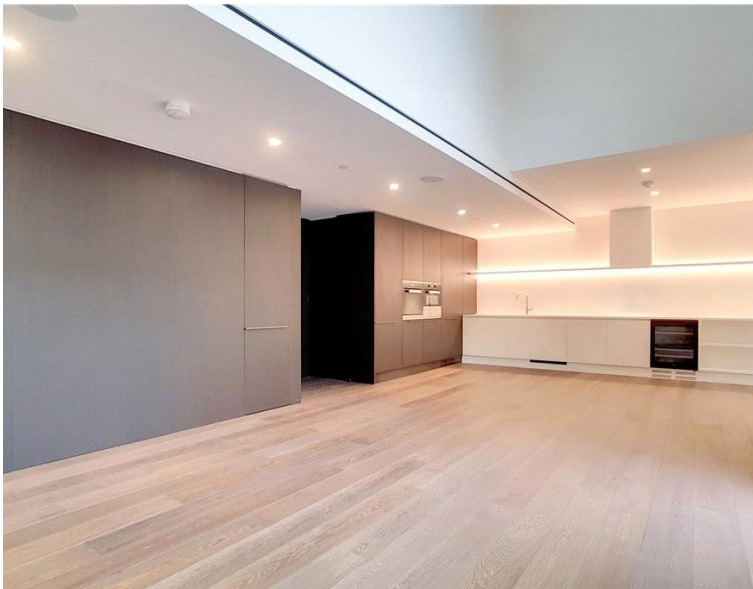
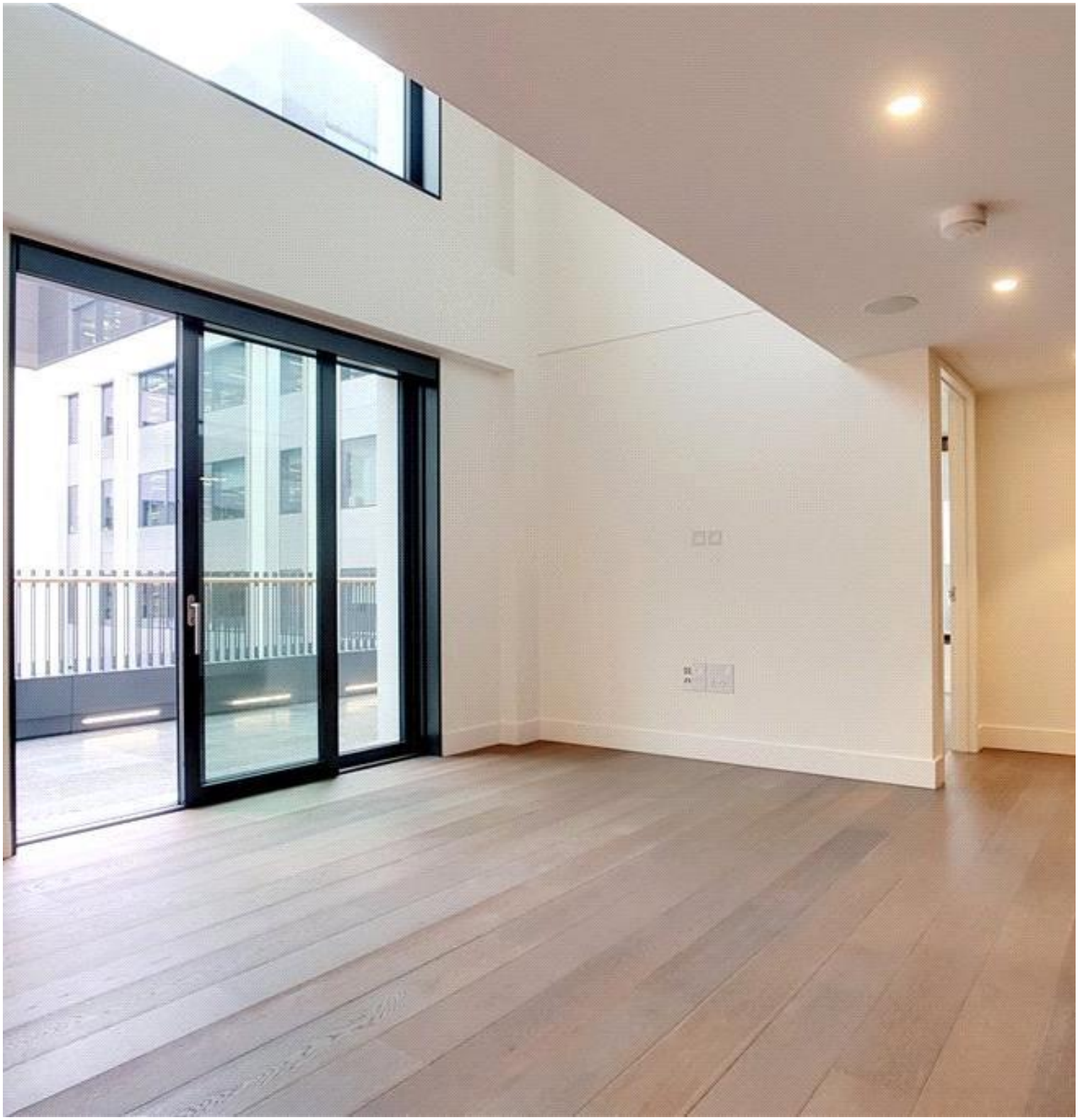


37 Rathbone Place, London W1T

Asking price £3,500,000 Leasehold







Description

On the 3rd and 4th floor this three bedroom duplex apartment with private terrace boasts approx. 1492 sq ft of living space.

The apartment comprises of an open plan reception room with fully fitted kitchen, private terrace, master bedroom with dressing area and en suite bathroom, second double bedroom with fitted wardrobes and en suite bathroom, third double bedroom, separate shower room.

Residents will benefit from a 24 hour concierge, access to beautiful gardens, residents' lounge, wine storage and tasting room, screening room, gymnasium, swimming pool, sauna and steam room. Rathbone Square has been designed to offer a tranquil environment, whilst being ideally located moments from Oxford Street.

Situated in the heart of London's West End, ideal for transport links in and around London, with The City and West London being just 10 minutes away via the underground.

Leasehold: EPC: B, Council Tax band: G, Ground rent: approx. £1000pa, Service charge: approx. £14.65 per sq. ft.

- 3 Bedrooms
- 3 Bathrooms
- Private terrace
- 24 Hour concierge
- Residents gym
- Residents pool and spa
- Residents screening room
- 0.2 mile from Tottenham Court Road station
- Approx. 1,492 sq ft (138 sq m)
- Leasehold

