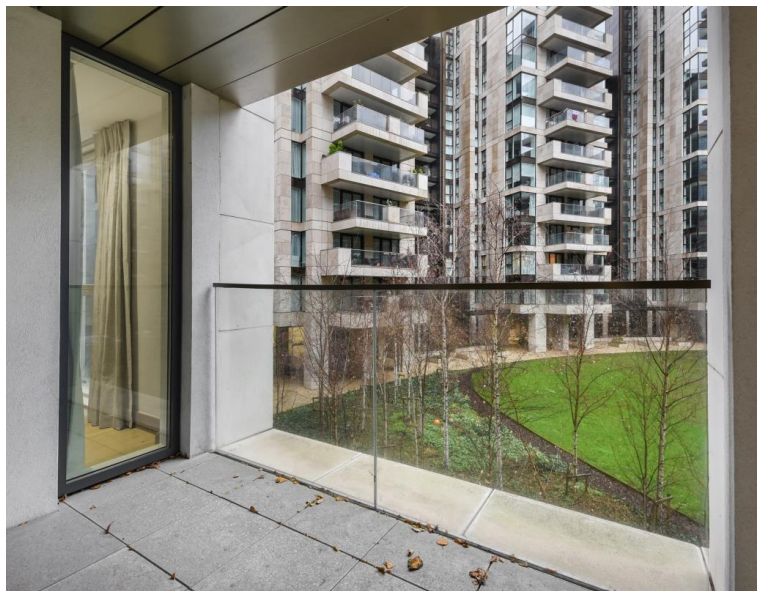


6 Hermitage Street, London W2

Guide price £1,300,000 Leasehold







Description

A two bedroom apartment with Private balcony in the new Paddington Exchange development by Taylor Wimpey.

The second floor apartment is set over approx. 1049 sq ft and comprises of a spacious open plan reception with fully fitted kitchen, private balcony, master bedroom fitted wardrobes and en suite, second double bedroom with fitted wardrobes, family bathroom with additional shower, ample storage.

The development boasts outstanding amenities, including a 24-hour concierge service, beautifully landscaped grounds and a communal roof terrace offering panoramic views across the City.

Paddington Exchange is ideally located within walking distance of Paddington Station for the crossrail and is just minutes away from The West End of London. Transport links servicing London Bridge, The City and London St Pancras are also readily available.

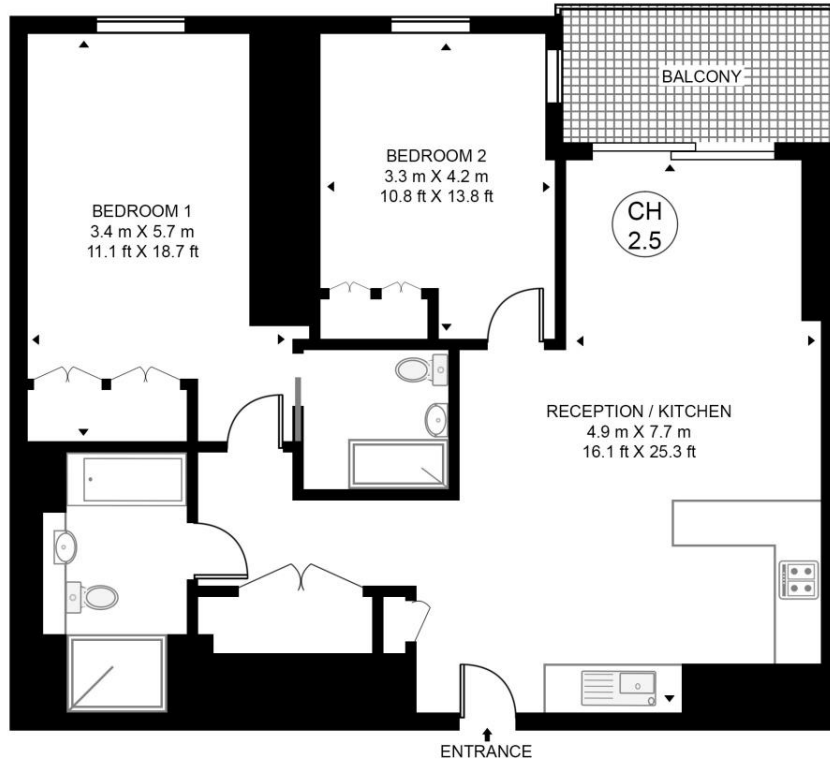
- 2 Bedroom
- 2 Bathroom
- Private Balcony
- 24 Hour concierge
- Residents roof terrace
- EPC: B
- Approx. 1049 sq ft (97.5 sqm)
- Leasehold

Floorplan

1,049 sq ft | 98 sq m

PADDINGTON EXCHANGE, HERMITAGE STREET

APPROXIMATE GROSS INTERNAL FLOOR AREA 1049 SQ.FT (97.5 SQ.M)



SECOND FLOOR



This floor plan has been defined by the RICS Code of Measurement. This floor plan and all others are for approximate representative purposes only and upon usage is agreed to as such by the client.
WWW: hdvirtualart.com | TEL: 0203.974.1567 | EMAIL: info@hdvirtualart.com

City
25 Walbrook The Walbrook
Building,
London EC4N 8AF
+4420 7337 4000

Urban living, your way.

jll.co.uk/residential

© 2019 Jones Lang LaSalle IP, Inc. All rights reserved. All information contained herein is from sources deemed reliable; however, no representation or warranty is made to the accuracy thereof.

