



Tudway Road, London SE3

Guide price £440,000 Leasehold







Description

This spacious two bedroom, two bathroom modern apartment located in the desirable Kidbrooke Village development. Just a short walk from Kidbrooke mainline station for an easy commute to the City, Blackheath for restaurants and local shops.

The property comprises large entrance hall with built in storage, a light and spacious living room with a balcony overlooking green space, space for dining, open plan kitchen with white high gloss units and integrated appliances.

Two double bedrooms, master with built in wardrobes and en-suite bathroom and a separate family bathroom.

The property benefits from no onward chain and a walking distance from Kidbrooke mainline station, early viewings are highly recommended.

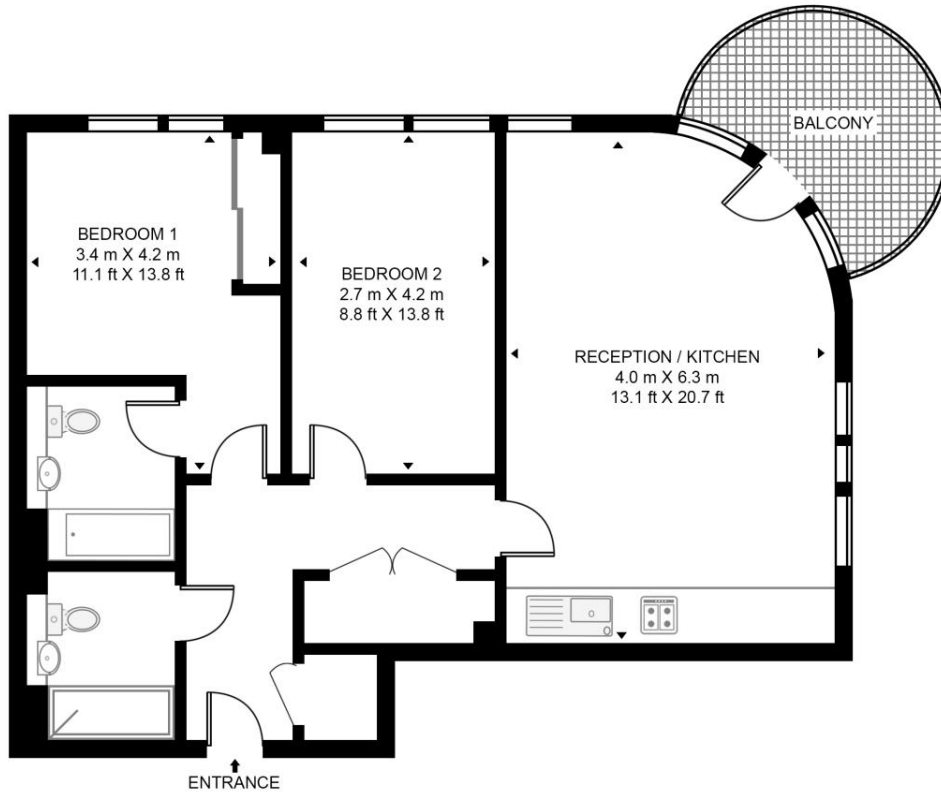
- 2 Double bedrooms
- 2 Bathrooms
- Balcony
- 2nd Floor modern apartment
- Beautifully presented throughout
- Approx. 766 sq ft (71.2 sq m)
- Underground parking
- Walk to Kidbrooke mainline station
- EPC: B

Floorplan

766 sq ft | 71 sq m

MALTBY HOUSE

APPROXIMATE GROSS INTERNAL FLOOR AREA 766 SQ.FT (71.2 SQ.M)



SECOND FLOOR



This floor plan has been defined by the RICS Code of Measurement. This floor plan and all others are for approximate representative purposes only and upon usage is agreed to as such by the client.
WWW: hdvirtualart.com | TEL: 0203.974.1567 | EMAIL: info@hdvirtualart.com

Greenwich
22 College Approach,
London SE10 9HY
02088589986
lettingsgreenwich@eu.jll.com

Urban living, your way.

jll.co.uk/residential

© 2019 Jones Lang LaSalle IP, Inc. All rights reserved. All information contained herein is from sources deemed reliable; however, no representation or warranty is made to the accuracy thereof.

