



Park Mansions, London SW1X

Guide price £2,000,000 Leasehold





Description

This bright and spacious apartment is situated on the fourth floor of a luxury residential building close to Hyde Park. The property benefits from well-proportioned accommodation throughout; comprising of a spacious reception room featuring stunning wooden flooring, a separate stylish modern kitchen, two bedrooms both with en suites and a separate WC.

Park Mansions is located in the heart of Knightsbridge and only seconds away from the delights of Harrods, Harvey Nichols, One Hyde Park and Sloane Street.

- 2 Bedroom
 - 2 Bathroom
 - 4th Floor with lift
 - Amazing location
 - Porter
 - Approx 989 sq ft (92 sq m)
 - EPC rating
-

Floorplan

989 sq ft | 92 sq m

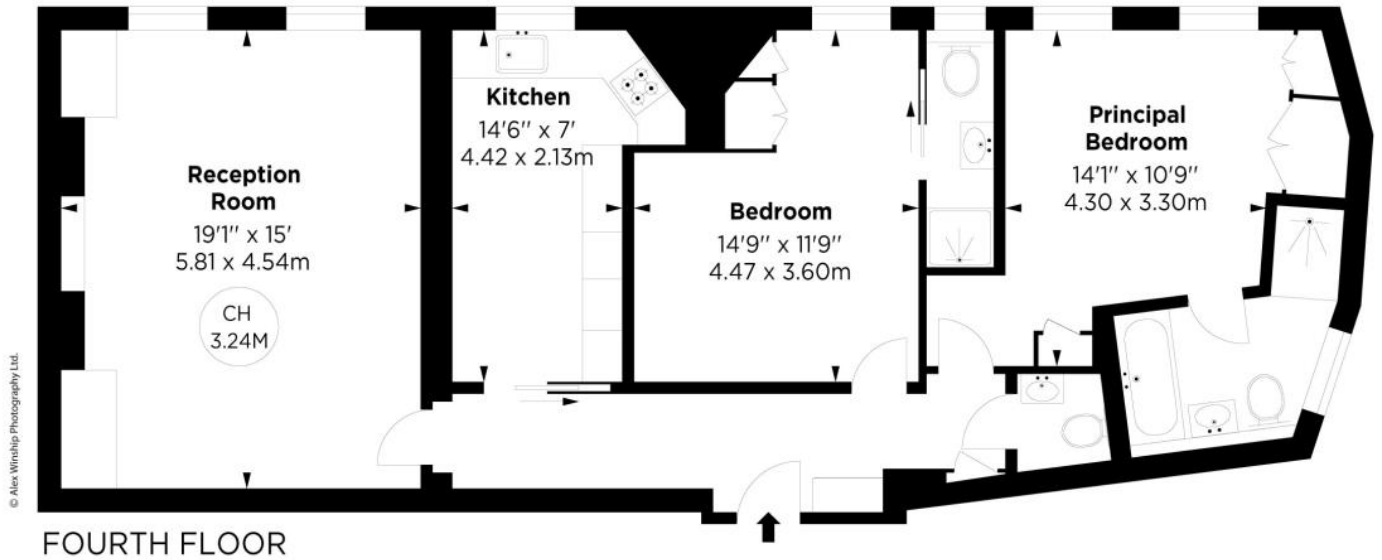
Park Mansions, SW1

APPROX. GROSS INTERNAL AREA *
989 Sq Ft - 91.88 Sq M

This floorplan is for GUIDANCE ONLY and NOT FOR VALUATION purposes.



Key :
CH - Ceiling Height



ALEX WINSHIP
Photography
© Alex Winship Photography Ltd.

*Floorplan for guidance only, not to scale or valuations purposes. It must not be relied upon as a statement of fact. All measurements and areas are approximate and have been prepared in accordance with the current edition of the BLS Code of Measuring Practice.



Knightsbridge
Wood Wharf,
London E14 5GX
+4420 7306 1600
SalesKnightsbridge@eu.jll.co

Urban living, your way.

jll.co.uk/residential

© 2019 Jones Lang LaSalle IP, Inc. All rights reserved. All information contained herein is from sources deemed reliable; however, no representation or warranty is made to the accuracy thereof.

