



## Essex Street, London WC2R

Price £1,385 per week - Furnished







## Description

A stunning 3 bedroom apartment in the exclusive Aldwych Chambers, situated moments from the iconic Strand.

The apartment boasts approximately 1,155 square feet of living space, is offered on a fully furnished basis and comprises open plan living room and kitchen with integrated Miele and Siemens appliances, two bedrooms with large fitted wardrobes, with luxury en-suite bathrooms, one with bath and walk-in shower. The third room can be used as a study or bedroom and there is a third separate bathroom.

The development is located next to the iconic Strand, a short walk (0.6 miles) from Covent Garden and approximately 0.1 mile from Temple Underground station. Aldwych Chambers also benefits from a concierge service and private cinema.

We understand that cooling / heating is delivered via a communal system for which separate charges apply.

As well as paying the rent, you may also be required to make the following permitted payments. If your tenancy does not qualify as an AST, additional fees may apply.

Please visit [jll.co.uk/fees](http://jll.co.uk/fees) for details of fees which may be payable

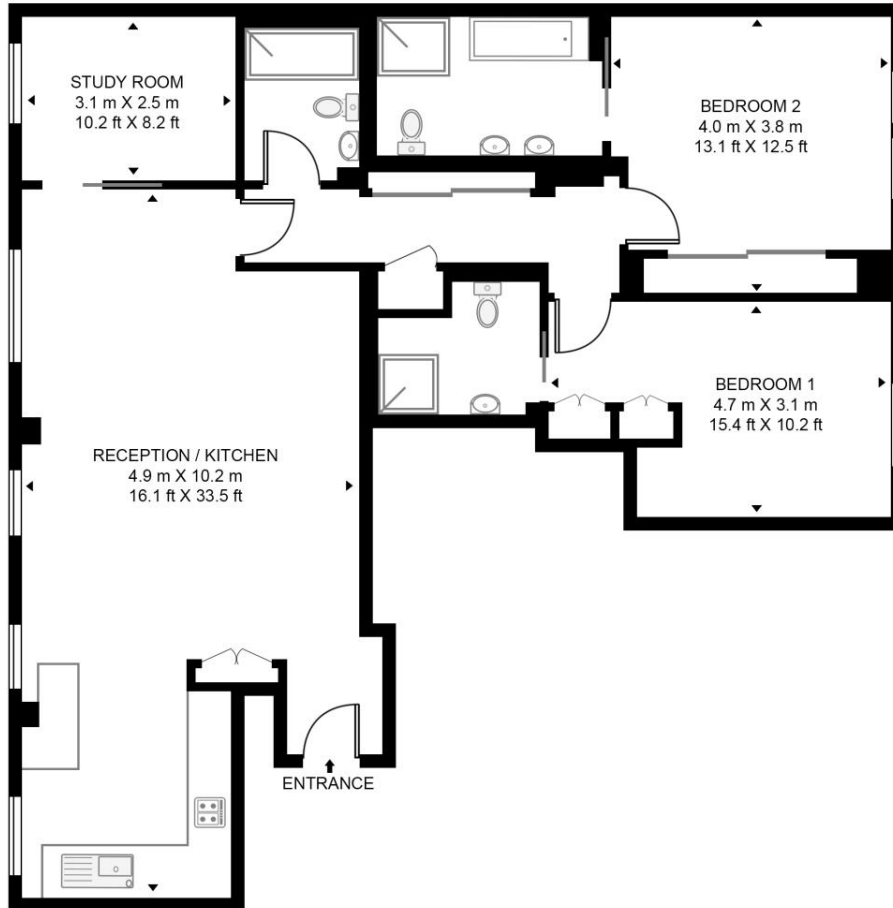
- 3 Bedrooms
- 1 Family Bathroom
- 2 En-suite bathrooms
- 2nd floor
- Open-plan living room
- Private cinema
- 24 hour concierge
- 0.1 miles from Temple station
- Approx. 1,155 Sq ft ( 107 sq m)
- Furnished

# Floorplan

1,155 sq ft | 107 sq m

## ALDWYCH CHAMBERS WC2R

APPROXIMATE GROSS INTERNAL FLOOR AREA 1148 SQ.FT (106.7 SQ.M)



### SECOND FLOOR



This floor plan has been defined by the RICS Code of Measurement. This floor plan and all others are for approximate representative purposes only and upon usage is agreed to as such by the client.

WWW: [hdvirtualart.com](http://hdvirtualart.com) | TEL: 0203.974.1567 | EMAIL: [info@hdvirtualart.com](mailto:info@hdvirtualart.com)

City  
25 Walbrook The Walbrook  
Building,  
London EC4N 8AF  
+4420 7337 4000

*Urban living, your way.*

[jll.co.uk/residential](http://jll.co.uk/residential)

© 2019 Jones Lang LaSalle IP, Inc. All rights reserved. All information contained herein is from sources deemed reliable; however, no representation or warranty is made to the accuracy thereof.

