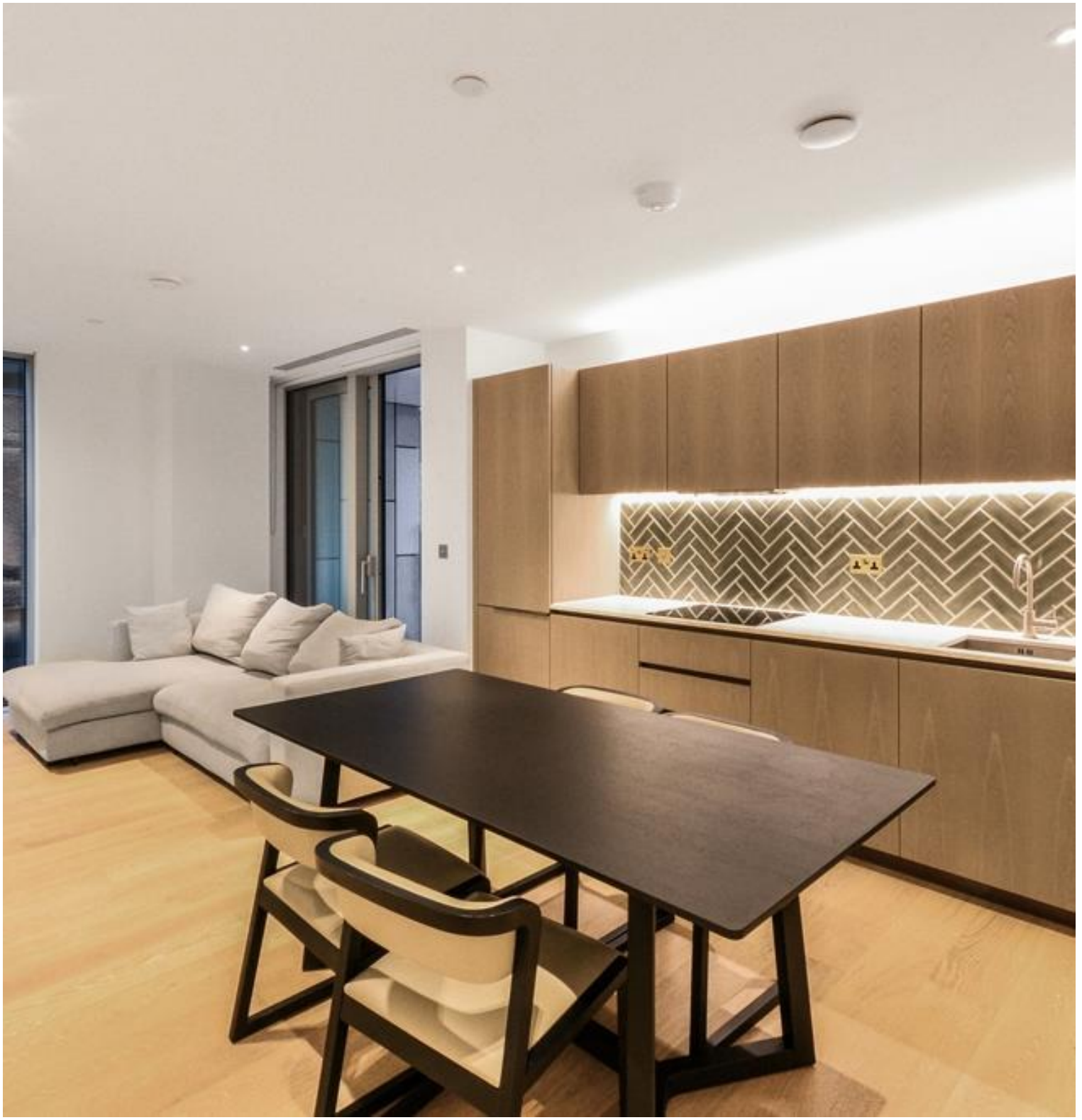


City Road, London EC1V

Guide price £875,000 Leasehold







Description

A spacious 2 bedroom apartment in The Atlas Building, Old Street, EC1.

This stunning apartment boasts a spacious reception area with fully fitted contemporary kitchen, large balcony with South and East facing aspect towards the City, master bedrooms with large fitted wardrobes and en suite bathroom, second double bedroom with fitted wardrobe, luxury bathroom with porcelain finish, wood flooring, excellent storage. Each apartment in the Atlas building also benefits from comfort cooling / heating throughout.

The Atlas Building is next to Old Street station (0.1 mile) and ideally situated for the City, Hoxton, Shoreditch and Angel. The development offers top of the range amenities which includes pool, spa, gymnasium, private cinema room, resident's only business lounge and 24 hour concierge.

Leasehold, EPC: B, Approx. 846 sq ft

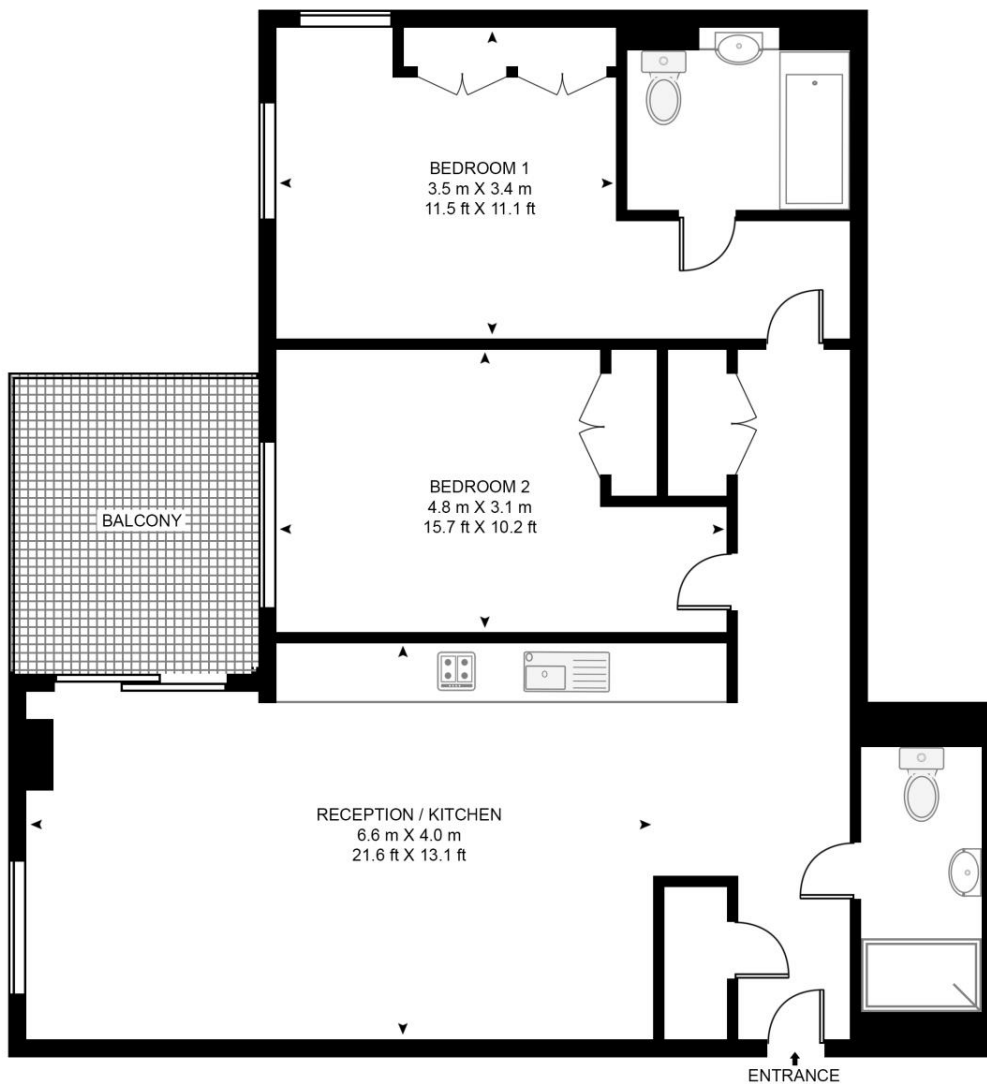
- 2 Bedrooms
- 2 Bathrooms
- Private balcony
- Residents gym
- Residents pool
- Residents spa
- 24 hour concierge
- 0.1 miles from Old Street Station
- Approx. 846 sq ft (78.6 sq m)
- Leasehold

Floorplan

846 sq ft | 79 sq m

ATLAS BUILDING, 145 CITY ROAD

APPROXIMATE GROSS INTERNAL FLOOR AREA 846 SQ.FT (78.6 SQ.M)



SECOND FLOOR

HDVA

This floor plan has been defined by the RICS Code of Measurement. This floor plan and all others are for approximate representative purposes only and upon usage is agreed to as such by the client.

WWW: hdvirtualart.com | TEL: 0203.974.1567 | EMAIL: info@hdvirtualart.com

City
25 Walbrook The Walbrook
Building,
London EC4N 8AF
+4420 7337 4000

Urban living, your way.

jll.co.uk/residential

© 2019 Jones Lang LaSalle IP, Inc. All rights reserved. All information contained herein is from sources deemed reliable; however, no representation or warranty is made to the accuracy thereof.

