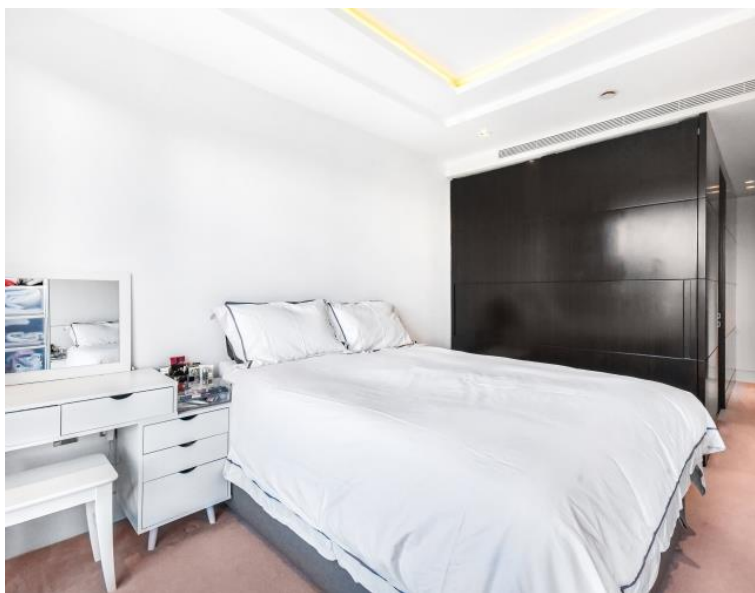




Kensington High Street, London W14

Guide price £1,450,000 Leasehold







Description

A luxury two bedroom apartment in the prestigious 375 Kensington High Street development. Arranged over the 5th floor, the property comprises 2 double bedrooms (one en-suite) , an open plan kitchen and living room, a second bathroom, a storage cupboard and a private balcony.

This apartment has ample living space and enjoys copious light across all rooms. It also comes with a right to park and benefits from a 24 hour concierge as well as resident only leisure facilities including gym, swimming pool, cinema room, business centre and communal gardens.

- 2 Bedroom
- 2 Bathroom
- Comfort cooling
- Residents cinema, gym, spa and pool
- 24hr Concierge
- Private balcony
- One secure parking space included
- Approx 908 sq ft (84 sq m)
- EPC rating: B
- Leasehold approx 990 years

Floorplan

908 sq ft | 84 sq m

WOLFE HOUSE, 389 KENSINGTON HIGH STREET
APPROXIMATE GROSS INTERNAL FLOOR AREA 908 SQ.FT (84.4 SQ.M)



FIFTH FLOOR



This floor plan has been defined by the RICS Code of Measurement. This floor plan and all others are for approximate representative purposes only and upon usage is agreed to as such by the client.
WWW: hdvirtualart.com | TEL: 0203.974.1567 | EMAIL: info@hdvirtualart.com

Kensington
387 Kensington High Street,
London W14 8QA
+4420 7087 5696
saleskensington@eu.jll.com

Urban living, your way.

jll.co.uk/residential

© 2019 Jones Lang LaSalle IP, Inc. All rights reserved. All information contained herein is from sources deemed reliable; however, no representation or warranty is made to the accuracy thereof.

