

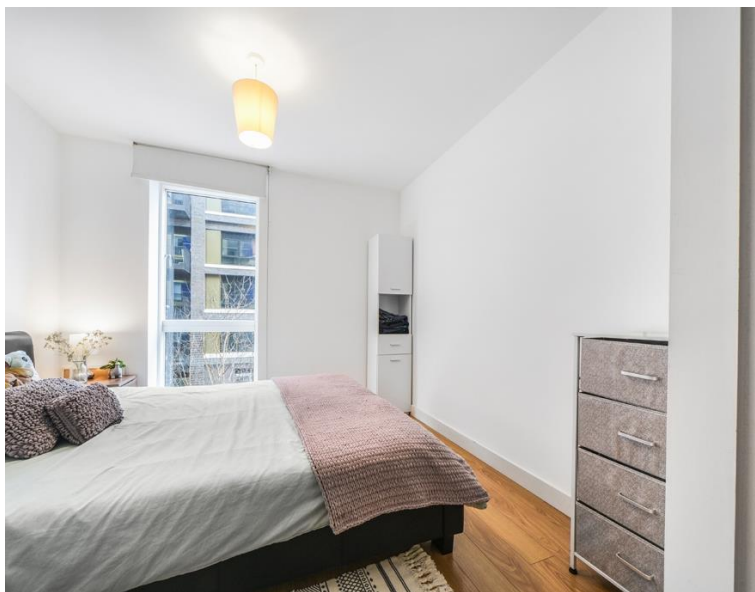
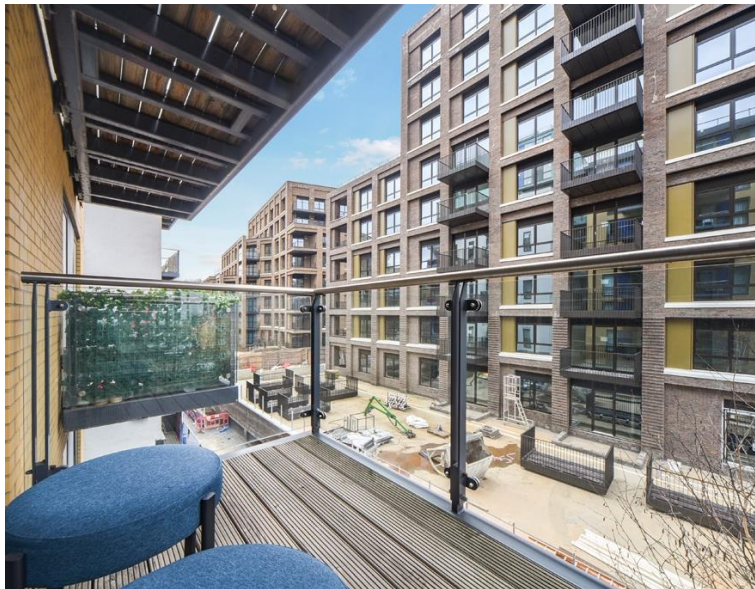


Conington Road, London SE13

Guide price £299,000 Leasehold







Description

A bright one bedroom apartment located on the second floor of the highly sought after Silkworks development, only a stone's throw from Elverson Road DLR and mainline station and also the local Lewisham amenities.

This fantastic apartment offers a great standard of finish and briefly comprises an open plan reception room with a fitted modern kitchen and a range of integrated appliances and access to the private balcony, one double bedroom with a fitted wardrobe, and a great family bathroom.

Further benefits are a 24 hour concierge and access to a residents gym.

No onward chain, early viewings are highly recommended.

The property is offered chain free and early viewings are highly recommended.

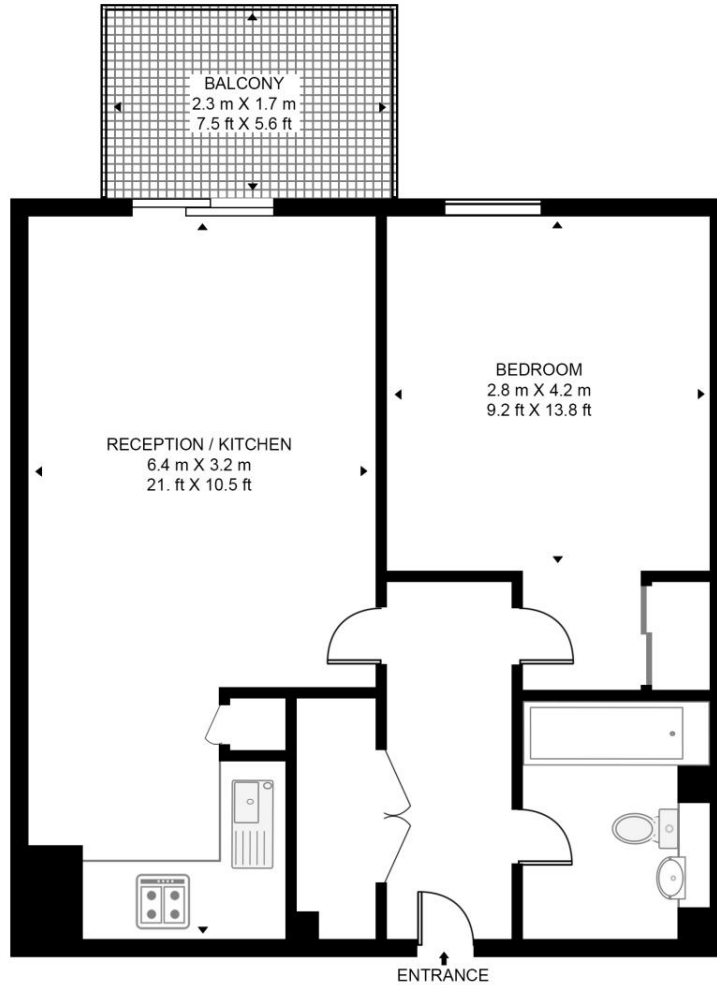
- 1 Bedroom
- 1 Bathroom
- Balcony
- 2nd floor modern apartment
- 24 hour concierge
- Access to residents gyms
- Walk to mainline and DLR
- Approx 428 Sq ft (39.8 sq m)
- No onward chain
- EPC: B

Floorplan

428 sq ft | 40 sq m

ADANA BUILDING, SE13

APPROXIMATE GROSS INTERNAL FLOOR AREA 428 SQ.FT (39.8 SQ.M)



SECOND FLOOR



This floor plan has been defined by the RICS Code of Measurement. This floor plan and all others are for approximate representative purposes only and upon usage is agreed to as such by the client.
WWW: hdvirtualart.com | TEL: 0203.974.1567 | EMAIL: info@hdvirtualart.com

Greenwich
22 College Approach,
London SE10 9HY
02088589986
lettingsgreenwich@eu.jll.com

Urban living, your way.

jll.co.uk/residential

© 2019 Jones Lang LaSalle IP, Inc. All rights reserved. All information contained herein is from sources deemed reliable; however, no representation or warranty is made to the accuracy thereof.

