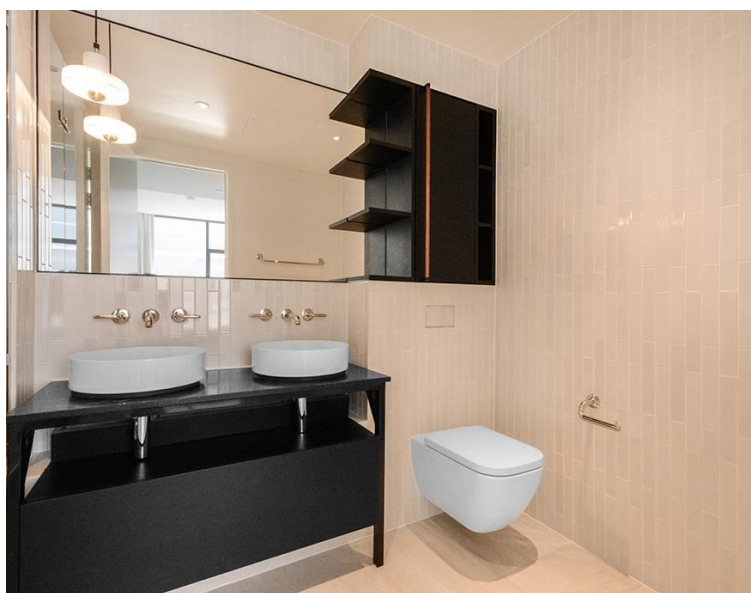
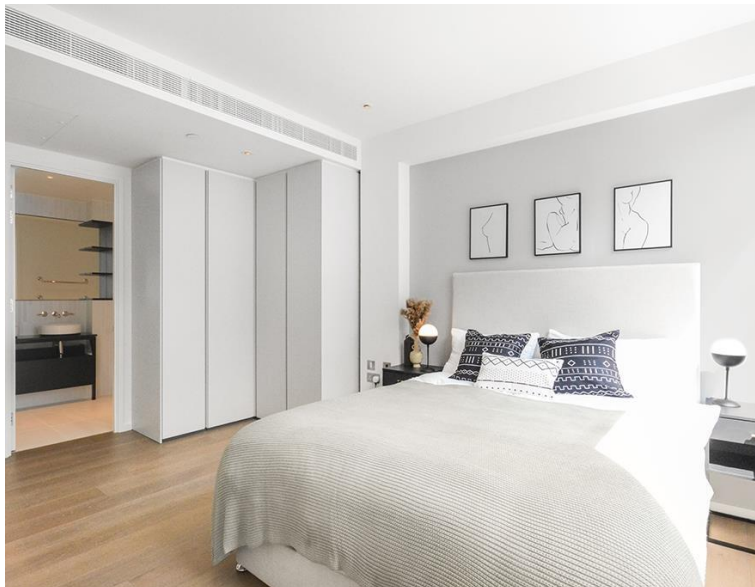


Long Street, London E2
Guide price £1,260,000 Leasehold







Description

A stunning 3 bedroom apartment in Long and Waterson, a luxury development by lazki Group Investments, in the heart of Shoreditch.

This stunning 3 bedroom apartment boasts 3 double bedrooms with large fitted wardrobes to bedrooms 2 and 3, two luxury ensuite bathrooms plus additional guest cloakroom, large reception / living area which can be partitioned into an additional study room, fitted kitchen with Miele appliances, wood flooring and excellent storage space.

Long & Waterson is a luxury development from Izaki Group Investments which boasts a high end specification and amazing on site amenities which include 24 hour concierge, 10,000 sq ft of private landscape, on site gym, spa and private cinema, and private work and meeting place.

The development is well situated for the City of London and is in the heart of Shoreditch, (approx.) 0.3 miles from Hoxton Station, (approx.) 0.6 miles from Old Street Station and (approx.) 0.3 miles from Hoxton Square.

- 3 Bedrooms
- 2 Bathrooms
- 2nd Floor
- Wood flooring
- 10,000 sq. ft. of private landscape split over four levels, including a New York High Line inspire
- Italian designed kitchens by Poliform, Miele appliances and Waterworks ironmongery
- 24-hour concierge
- Library space
- State-of-the-art gym, sauna and treatment room
- Private cinema

Floorplan

1,132 sq ft | 105 sq m

TOTAL AREA*

1,132 sq ft | 105.2 sq m



City
25 Walbrook The Walbrook
Building,
London EC4N 8AF
+4420 7337 4000

Urban living, your way.

jll.co.uk/residential

© 2019 Jones Lang LaSalle IP, Inc. All rights reserved. All information contained herein is from sources deemed reliable; however, no representation or warranty is made to the accuracy thereof.

