

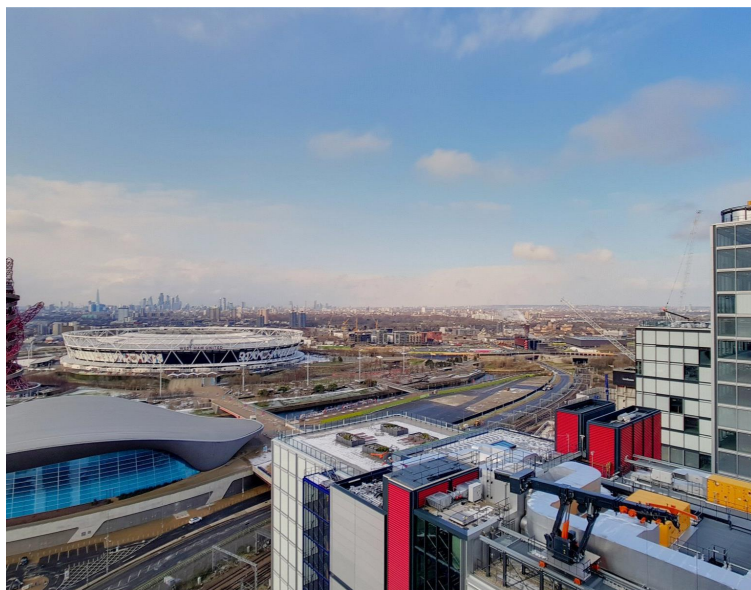


Glasshouse Gardens, London E20

Guide price £525,000 Leasehold







Description

This spacious one bedroom apartment is located on the 22nd floor of Stratford City's most sought after developments. The apartment has fantastic views across the Olympic Park and located in the popular Glasshouse Gardens development offering a 24 hour concierge, residents gym and just a short walk from Stratford underground station for a short commute to the City and Canary Wharf.

Property comprises of a spacious living room with space for dining, door leading to balcony. Modern fitted kitchen with integrated Bosch appliances and grey high gloss units. Large bedroom with grey high gloss built in wardrobes. Luxurious bathroom with mirrored cabinets, rainfall shower and bath.

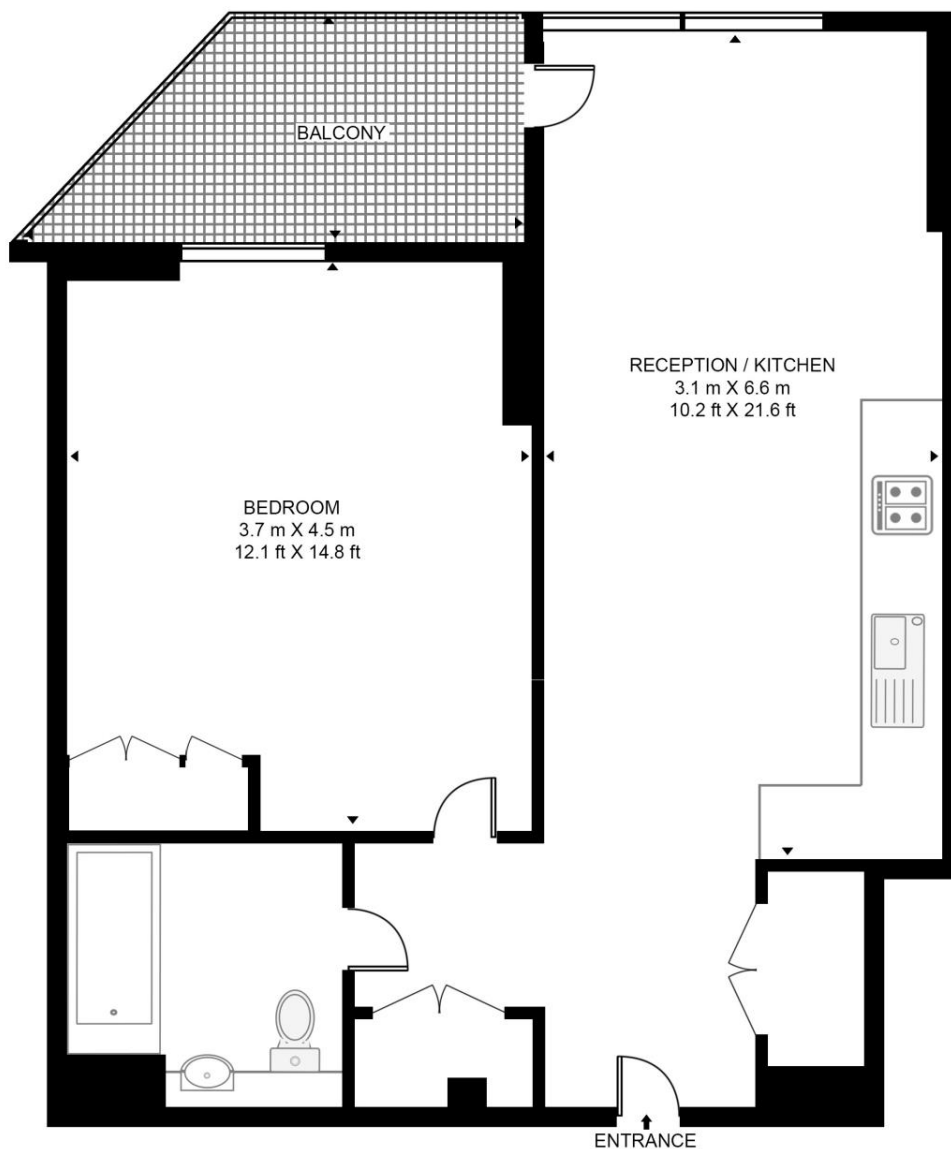
- 1 bedroom
- 1 bathroom
- 22nd floor
- Panoramic views
- 24 hour concierge
- Residents gym
- 0.3 mile to Stratford underground
- Furnished
- Approx 562 sq ft (52.2 sq m)
- EPC B

Floorplan

562 sq ft | 52 sq m

CASSIA BUILDING

APPROXIMATE GROSS INTERNAL FLOOR AREA 562 SQ.FT (52.2 SQ.M)



Stratford
5 Station Street,
London E15 1DA
+4420 3147 1500
Lettingsstratford@eu.jll.com

Urban living, your way.

jll.co.uk/residential

© 2019 Jones Lang LaSalle IP, Inc. All rights reserved. All information contained herein is from sources deemed reliable; however, no representation or warranty is made to the accuracy thereof.

