



Glasshouse Gardens, London E20

Asking price £675,000 Leasehold







Description

Opportunity to purchase within the West Tower of the popular Glasshouse Gardens development in Queen Elizabeth Park, E20.

Situated on the third and comprising of approximately 712 square feet, the property boasts an open-plan kitchen/living area, private balcony, two double bedrooms and one bathroom. This stunning development is set within new landscaped gardens, which overlook the iconic Olympic legacy landmarks of the Stadium, Aquatics Centre and ArcelorMittal Orbit. The development benefits from a gym and 24 hour concierge and is located in Queen Elizabeth Park just a short walk from Stratford station (including Crossrail) and directly opposite Westfield Shopping centre.

Glasshouse Gardens is situated at the gateway to Queen Elizabeth's Transport links servicing, Canary Wharf, the West End and the City.

Early viewings are highly recommended.

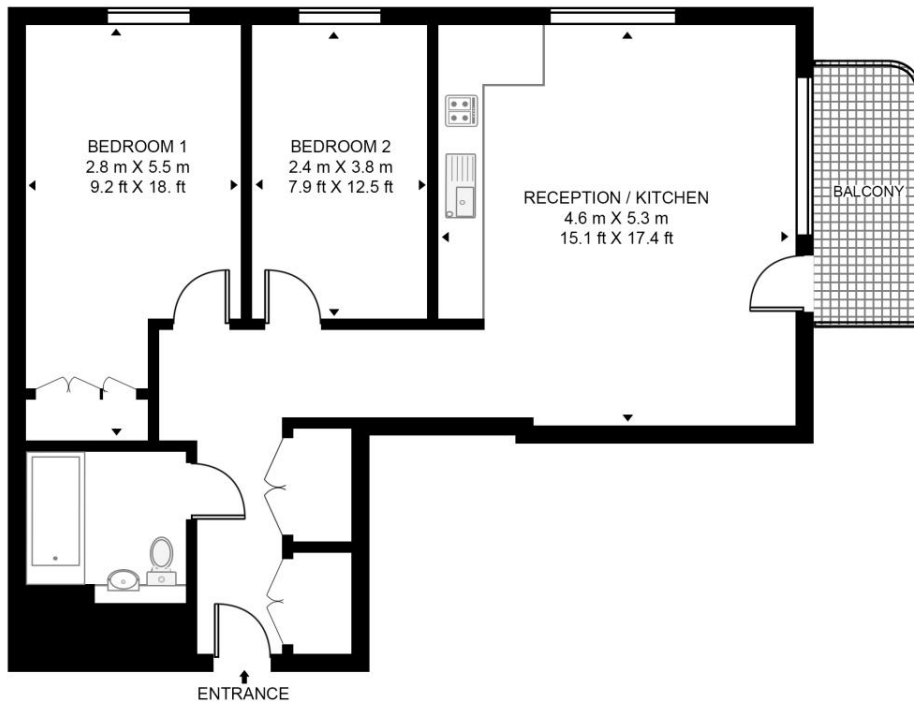
- 2 Double bedrooms
- 1 Bathroom
- Private balcony
- 3rd Floor modern apartment
- Approx. 712 sq ft (66.2 sq m) (internal space)
- Built in storage
- Short walk to Stratford underground station
- Short walk to Westfield's Stratford City
- EPC: B

Floorplan

712 sq ft | 66 sq m

CASSIA POINT, GLASSHOUSE GARDENS

APPROXIMATE GROSS INTERNAL FLOOR AREA 712 SQ.FT (66.2 SQ.M)



THIRD FLOOR



This floor plan has been defined by the RICS Code of Measurement. This floor plan and all others are for approximate representative purposes only and upon usage is agreed to as such by the client.
WWW: hdvirtualart.com | TEL: 0203.974.1567 | EMAIL: info@hdvirtualart.com

Stratford
5 Station Street,
London E15 1DA
+4420 3147 1500
Lettingsstratford@eu.jll.com

Urban living, your way.

jll.co.uk/residential

© 2019 Jones Lang LaSalle IP, Inc. All rights reserved. All information contained herein is from sources deemed reliable; however, no representation or warranty is made to the accuracy thereof.

