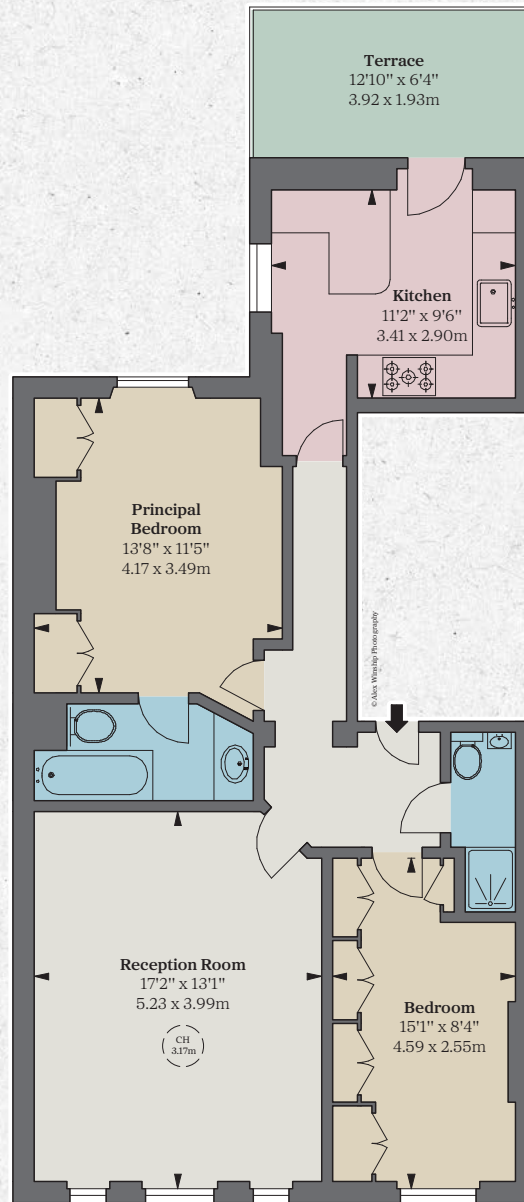




Bina Gardens

LONDON SW5



Second Floor

Approximate Gross Internal Area
784 sq ft / 72.83 sq m



A delightful two bedroom apartment of 784 sq ft / 73 sq m situated on the second floor, with a roof terrace.

The apartment has a reception room with a floor-to ceiling height of 3.17m, separate kitchen leading onto a terrace, two double bedrooms and two bathrooms (one en suite). There is no lift in the building.

Bina Gardens is a quiet street in the Royal Borough of Kensington and Chelsea, just off the Old Brompton Road. South Kensington and Gloucester Road underground stations are a short walk away.

ACCOMMODATION

- 2 Double bedrooms
- 2 Bathrooms (1 en suite)
- Reception room
- Kitchen
- Roof terrace

TERMS

Guide Price: £1,350,000
 Tenure: Leasehold with approximately 84 years remaining (expiring 25/12/2107)
 Service Charge: £2,400 per annum (estimated)
 Ground Rent: £800 per annum (with reviews)
 Local Authority: Royal Borough of Kensington and Chelsea
 Council Tax: Band G
 EPC: D



SUSAN METCALFE
RESIDENTIAL

020 7581 3349

info@susanmetcalfe.com
susanmetcalfe.com



JLL Knightsbridge
knightsbridge@eu.jll.com | 020 7306 1600

JLL Chelsea
chelsea@eu.jll.com | 020 7399 5010

jll.co.uk/residential