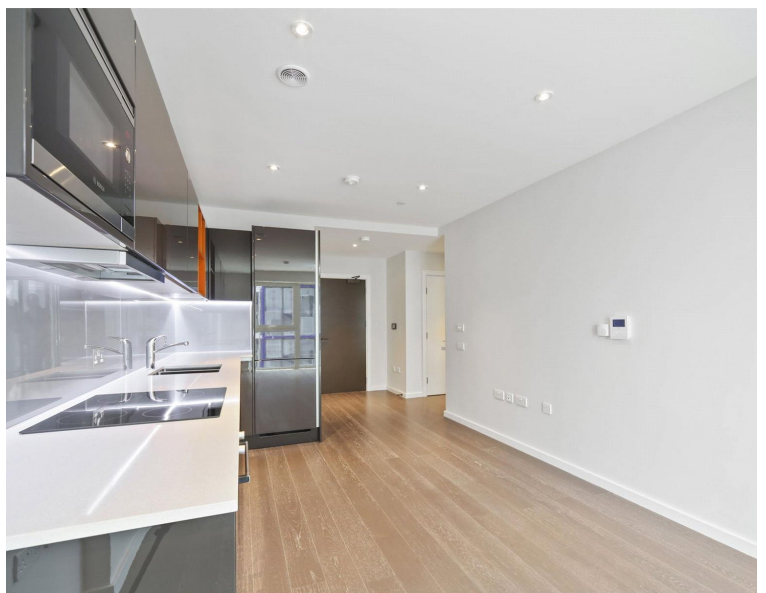
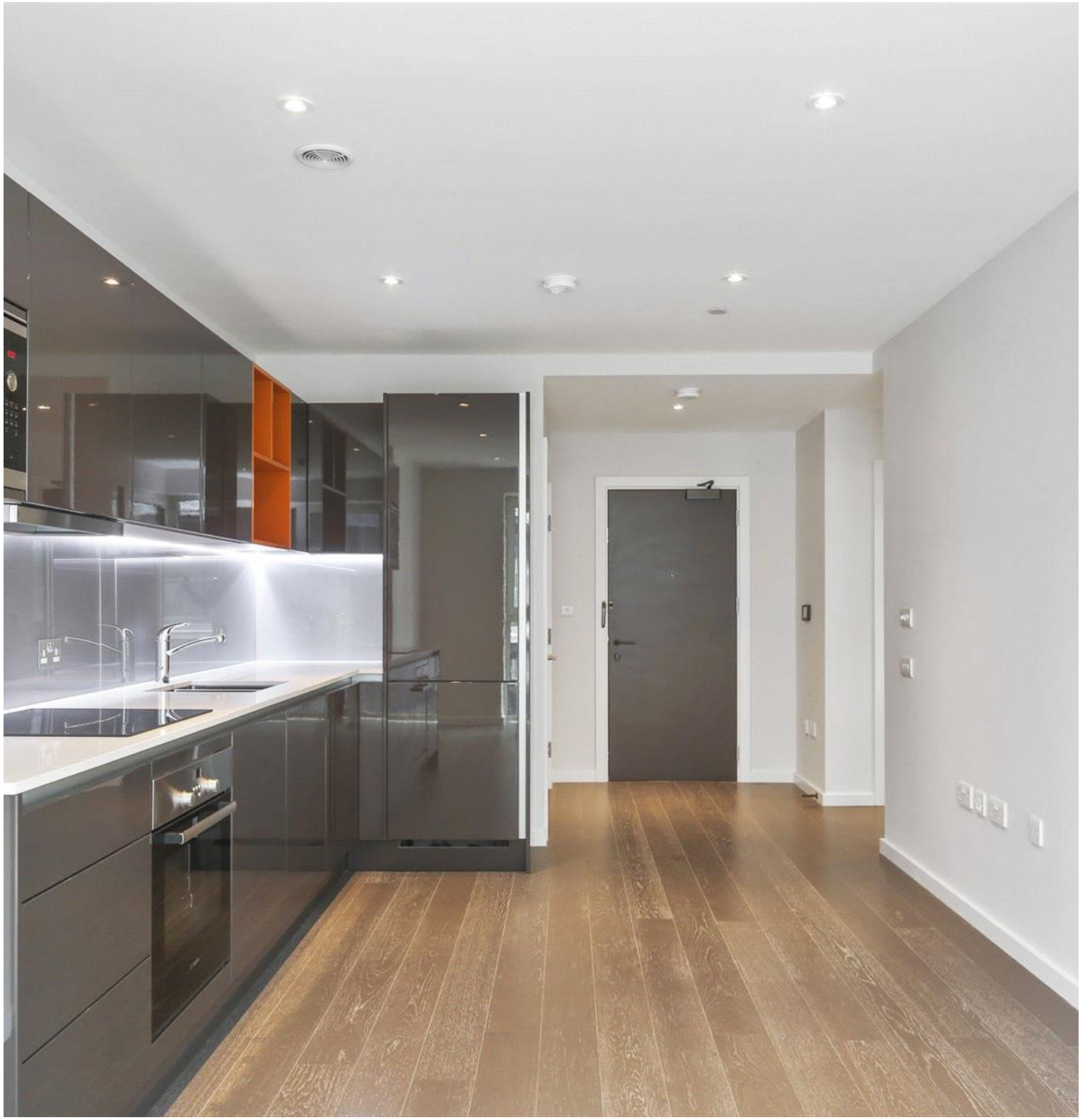


# Glasshouse Gardens, London E20

Asking price £465,000 Leasehold







## Description

Opportunity to purchase a 1 bedroom apartment within the East Tower of the popular Glasshouse Gardens development, E20. Glasshouse Gardens is situated at the gateway to Queen Elizabeth's Transport links servicing, Canary Wharf, the West End and the City.

Situated on the 5th floor and comprising of approximately 562 square feet, the property boasts an open-plan kitchen/living area with integrated appliances, floor-to-ceiling-windows allowing plenty of light, private balcony, double bedroom and large modern bathroom.

The development is directly opposite the amenities of Westfield Shopping Centre and a short walk from Stratford Underground Station.

Residents further benefit from a 24hr concierge service, residential gymnasium, chill room for groceries, secure intercom entry, lift access and is close to local amenities.

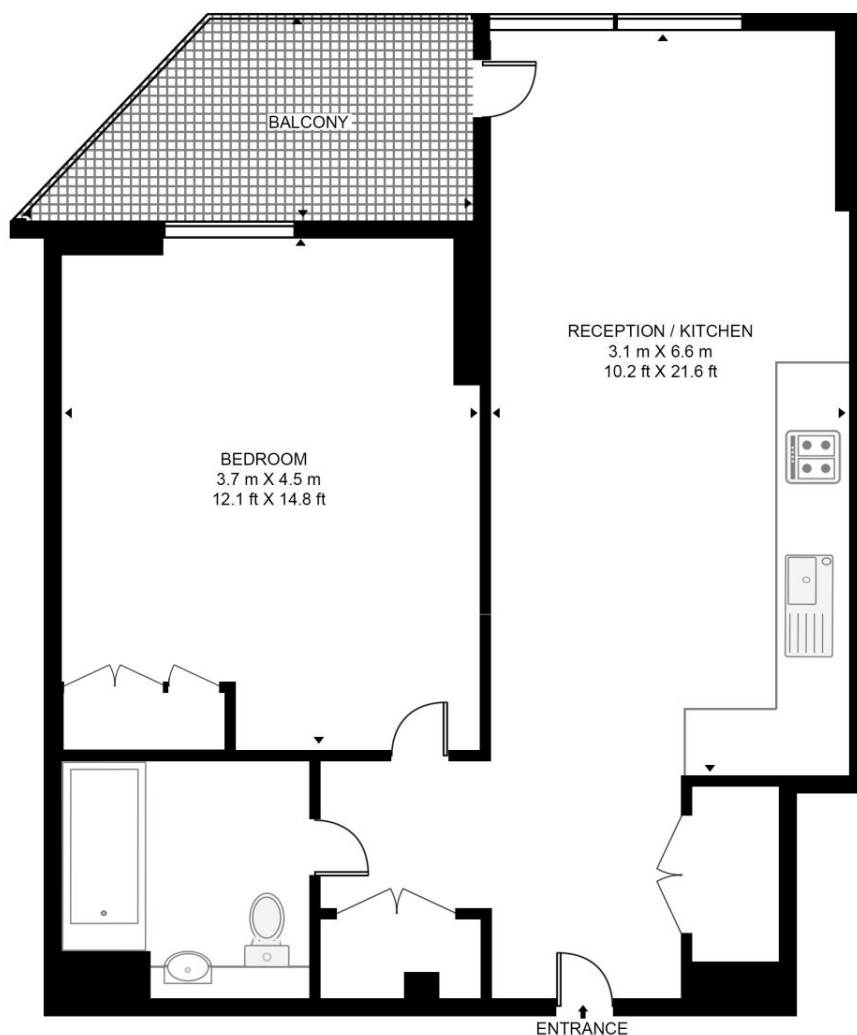
- One Bedroom
- One Bathroom
- Ultra Modern
- 5th Floor
- Balcony
- Residential Gym
- 24hr Concierge
- Approx. 562 sq ft (52.2 sq m)
- 0.3 miles to Stratford station
- EPC: B

# Floorplan

562 sq ft | 52 sq m

## CASSIA BUILDING

APPROXIMATE GROSS INTERNAL FLOOR AREA 562 SQ.FT (52.2 SQ.M)



**HDVA**

This floor plan has been defined by the RICS Code of Measurement. This floor plan and all others are for approximate representative purposes only and upon usage is agreed to as such by the client.

WWW: [hdvirtualart.com](http://hdvirtualart.com) | TEL: 0203.974.1567 | EMAIL: [info@hdvirtualart.com](mailto:info@hdvirtualart.com)

Stratford  
5 Station Street,  
London E15 1DA  
+4420 3147 1500  
[Lettingsstratford@eu.jll.com](mailto:Lettingsstratford@eu.jll.com)

*Urban living, your way.*

[jll.co.uk/residential](http://jll.co.uk/residential)

© 2019 Jones Lang LaSalle IP, Inc. All rights reserved. All information contained herein is from sources deemed reliable; however, no representation or warranty is made to the accuracy thereof.

