



Newcastle Place, London W2

Asking price £775,000 Leasehold







Description

A luxury one bedroom apartment in Westmark Tower, part of the new West End Gate development in Paddington. Arranged over the first floor the property comprises open plan kitchen/reception room, one double bedroom, large bathroom and a south facing private balcony, making most of natural daylight. Other benefits include 24 hour concierge, lift, gym, swimming pool, cinema, meeting room, residents lounge and private hire dining area. West End Gate by St Edward is built to the highest quality. Paddington mainline and underground stations are just a short walk away.

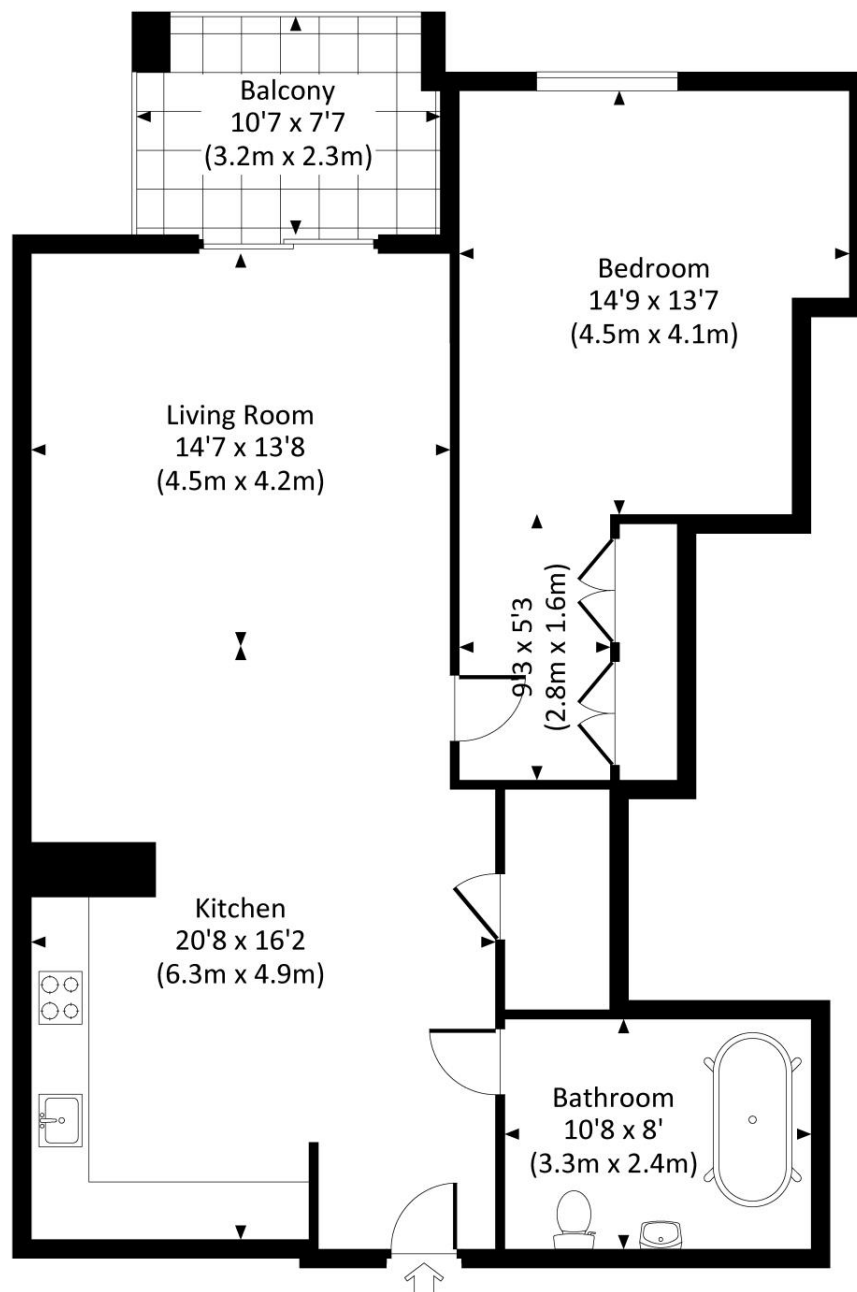
- One bedroom apartment
 - Open plan kitchen/reception room
 - Large bathroom
 - Private balcony
 - 24 Hour concierge
 - Resident only leisure facilities
 - Approx. 903 sq ft
 - EPC B
-

Floorplan

538 sq ft | 50 sq m

WESTMARK TOWER, W2

Approx. gross internal area
903 Sq Ft. / 83.9 Sq M.



FIRST FLOOR

All measurements are approximate and for guidance and illustrative purposes only.
Photography and Floor Plans by www.rayco.london - +44 7793 974 209

Kensington
387 Kensington High Street,
London W14 8QA
+4420 7087 5696
saleskensington@eu.jll.com

Urban living, your way.

jll.co.uk/residential

© 2019 Jones Lang LaSalle IP, Inc. All rights reserved. All information contained herein is from sources deemed reliable; however, no representation or warranty is made to the accuracy thereof.

