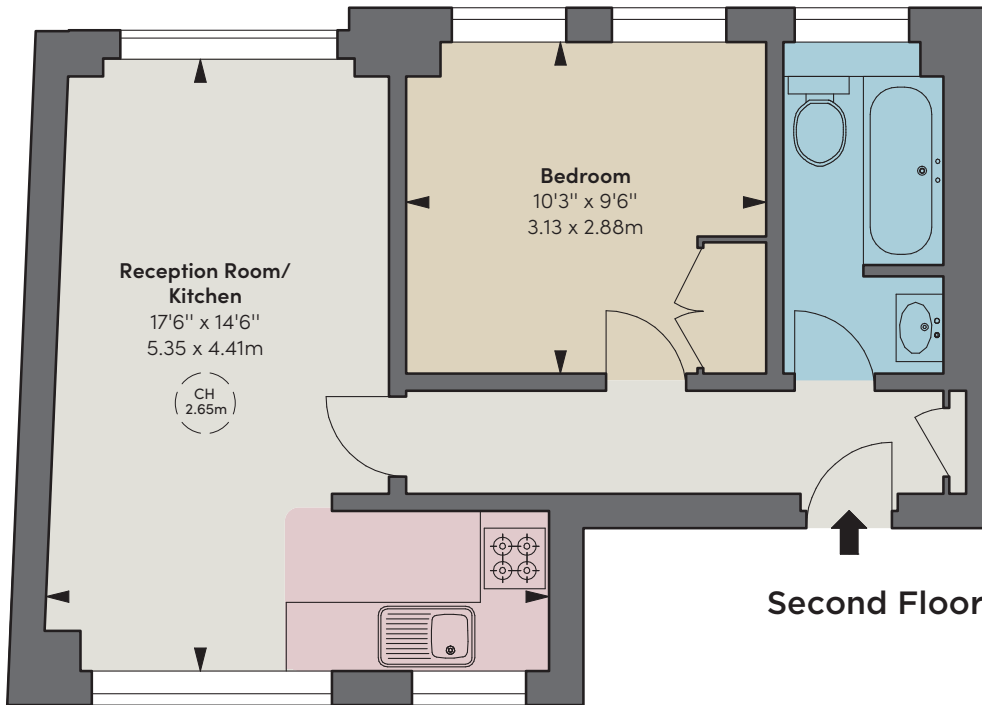


# Windsor Court Chelsea Green SW3





A very quaint "pied-à-terre" located in a portered block on the southern stretch of Cale Street with charming views over the newly landscaped Green. It is near to the King's Road and in the heart of the "Village" and all its shops and culinary outlets that the area is so well known for.

#### Accommodation

- Entrance hall
- Bedroom
- Bathroom
- Reception
- Open-plan kitchen
- Communal ground central heating and hot water
- Caretaker
- Lift



**Tenure** Leasehold; 125 years

**Guide Price** £595,000

**Ground Rent** Peppercorn

**Service Charge** 4.21% total outgoings (currently £5,563 pa plus £1,680 into a reserve fund)

#### Local Authority

The Royal Borough of Kensington & Chelsea

**Council Tax** Band C

**EPC Rating** C

**Approximate Gross Internal Area**

399 sq ft /  
37.15 sq m

#### Savills Earl's Court

237 Earl's Court Road  
London W5 9AH

**020 7578 6900**

dan.carrington@savills.com

savills.co.uk



*JLL Knightsbridge*

knightsbridge@eu.jll.com | 020 7306 1600

*JLL Chelsea*

chelsea@eu.jll.com | 020 7399 5010

jll.co.uk/residential