



## Millbank, London SW1P

Price £2,400 per week - Furnished,  
Unfurnished







## Description

Millbank Residences is the second phase of the highly anticipated 9 Millbank, developed by Berkley Homes. Millbank blends the deep history of the 1920s Grade II 'Imperial Chemical House' with a newly designed purpose built quarter offering exclusive, contemporary living for its residents. The development will provide residents with the highest quality leisure facilities, including a 24-hour concierge, a state-of-the-art gym, luxurious swimming pool with spa and treatment room, private cinema screening room, meeting rooms.

This three bedroom apartment has been crafted to the highest of specifications with a spacious and open plan living space featuring a luxury Kitchen with integrated Küppersbusch appliances, well-proportioned bedroom with built in wardrobes and elegant bathroom suite with rainfall shower. The apartment further benefits from engineered timber flooring, comfort cooling and underfloor heating throughout.

Living in Westminster also puts you within walking distance of three Royal Parks, upscale shopping at Knightsbridge, Mayfair's Michelin-starred restaurants and the theatres of the West End. Millbank itself is a world-renowned centre of art, home of the Tate Britain gallery and Chelsea College of Art and Design. Nearby educational institutions include the historic Wes

- 2 double bedrooms with en suite bathrooms
- Further double bedroom
- Spacious open plan kitchen with large reception/ dining room
- Family bathroom
- Unfurnished
- 6th floor
- Classic contemporary design
- Luxury on site facilities
- 24 hour concierge
- 0.5 Miles to Westminster station

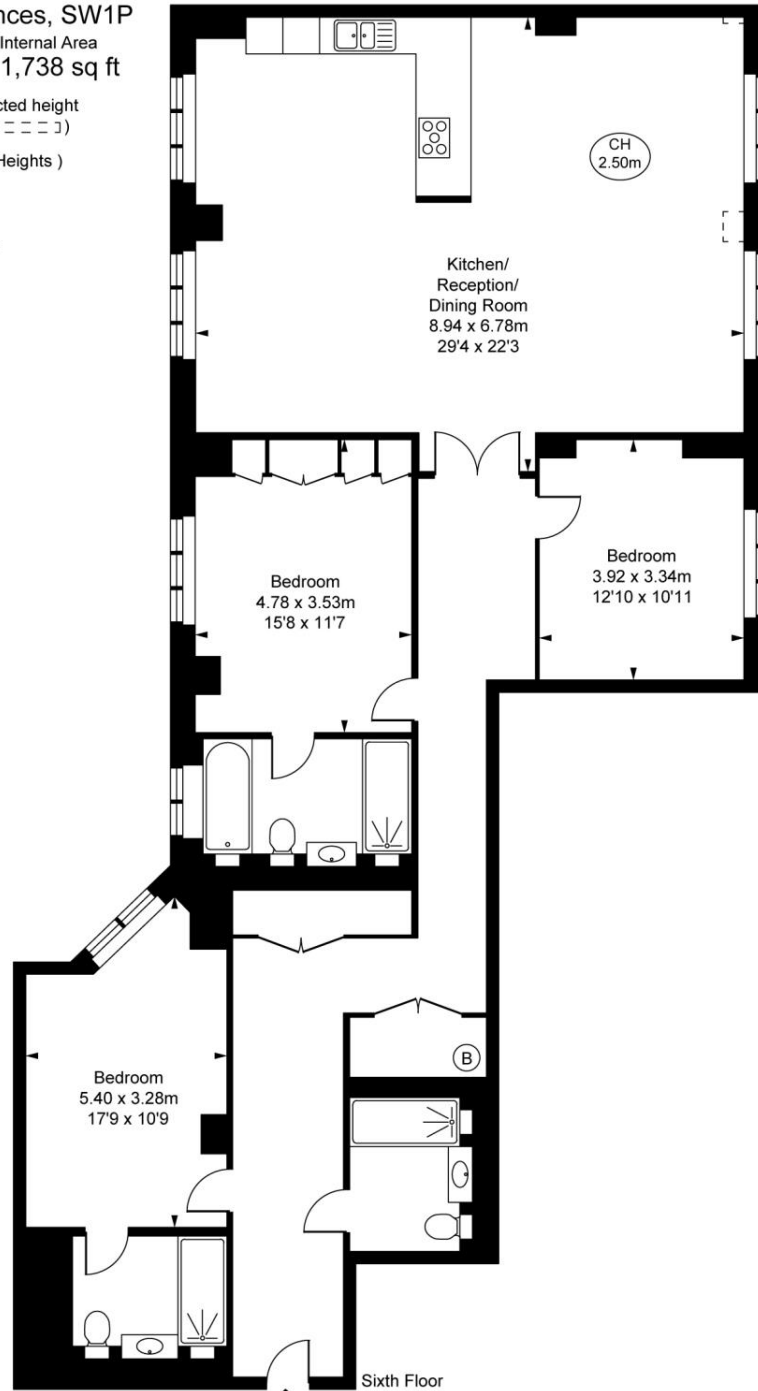
# Floorplan

sq ft | sq m

Millbank Residences, SW1P  
Approximate Gross Internal Area  
161.48 sq m / 1,738 sq ft

( Including restricted height  
under 1.5m [ ] )

( CH = Ceiling Heights )



This plan is not to scale. It is for guidance and not for valuation purposes.  
All measurements and areas are approximate only, and have been prepared in accordance with the current edition of the RICS Code of Measuring Practice.  
© Fulham Performance

Mayfair and Marylebone  
JLL, 30 Warwick Street,  
London W1B 5NH  
+44 207 399 5550  
tenancymanagement@eu.jll.co.uk

*Urban living, your way.*

[jll.co.uk/residential](http://jll.co.uk/residential)

© 2019 Jones Lang LaSalle IP, Inc. All rights reserved. All information contained herein is from sources deemed reliable; however, no representation or warranty is made to the accuracy thereof.

