



Strand, London WC2R

Price £1,750 per week - Furnished







Description

A luxurious sixth floor apartment in the modern converted period development. Marconi House is a Grade II listed building on London's famous Strand in the heart of the West End.

The apartment consists of an open plan reception space, kitchen featuring an island with Miele appliances, master bedroom with fitted wardrobes and en suite bathroom, two further each with en suites and fitted wardrobes, excellent storage. Smart home automation features include iPad style remote control touch screen devices, video entry phone security, comfort cooling, underfloor heating.

As well as paying the rent, you may also be required to make the following permitted payments. If your tenancy does not qualify as an AST, additional fees may apply. Please visit jll.co.uk/fees for details of fees which may be payable when renting a property.

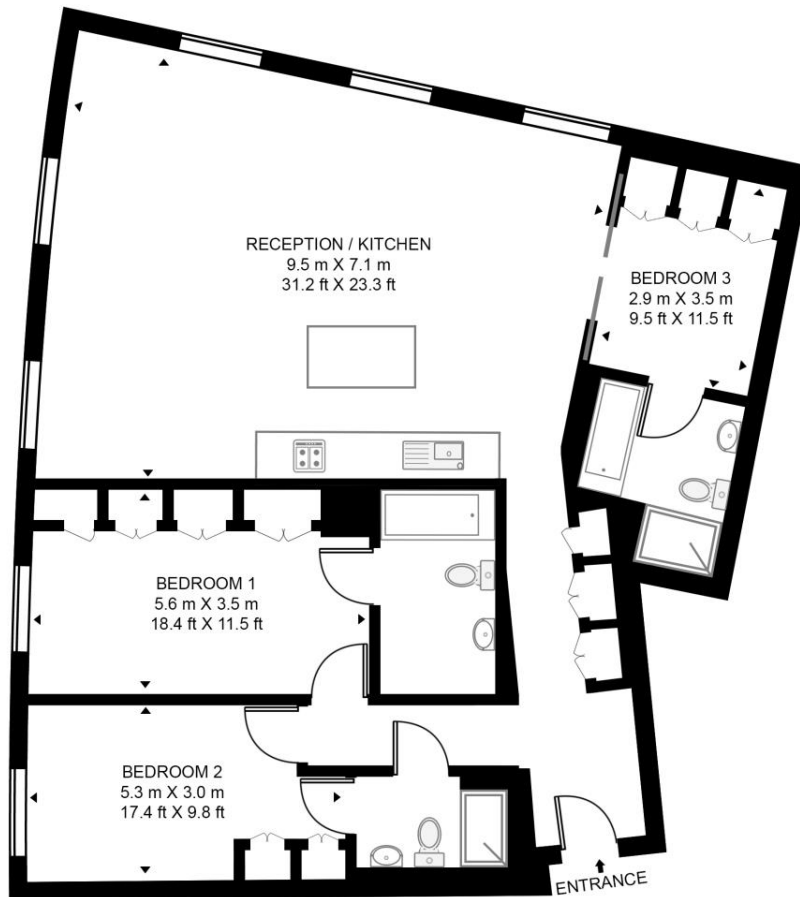
- 3 Bedrooms
- 3 Bathrooms
- 24 Hour concierge
- Smart home technology
- 0.3 miles from Temple station
- Furnished
- EPC: C
- Approx. 1433 sq ft

Floorplan

1,433 sq ft | 133 sq m

MARCONI HOUSE

APPROXIMATE GROSS INTERNAL FLOOR AREA 1433 SQ.FT (133.1 SQ.M)



SIXTH FLOOR



This floor plan has been defined by the RICS Code of Measurement. This floor plan and all others are for approximate representative purposes only and upon usage is agreed to as such by the client.
WWW: hdvirtualart.com | TEL: 0203.974.1567 | EMAIL: info@hdvirtualart.com

City
25 Walbrook The Walbrook
Building,
London EC4N 8AF
+4420 7337 4000

Urban living, your way.

jll.co.uk/residential

© 2019 Jones Lang LaSalle IP, Inc. All rights reserved. All information contained herein is from sources deemed reliable; however, no representation or warranty is made to the accuracy thereof.

