

1 New Tannery Way, London SE1

Price £550 per week - Furnished







Description

: A fully furnished 1 bedroom apartment in The Tannery, part of London Square Bermondsey development in the vibrant and popular Bermondsey / London Bridge area SE1.

Situated on the 4th floor, this spacious 1 bedroom apartment is offered fully furnished and comprises a large open plan reception area and fitted kitchen, large balcony, double bedrooms with fitted wardrobes, luxury bathroom, wood flooring and excellent storage space.

The development boasts fantastic amenities which include 12 hour concierge and resident's gym (once the gym is completed). The Tannery is situated in the vibrant and trendy hub of Bermondsey / London Bridge, with Bermondsey Station and London Bridge Station within walking distance.

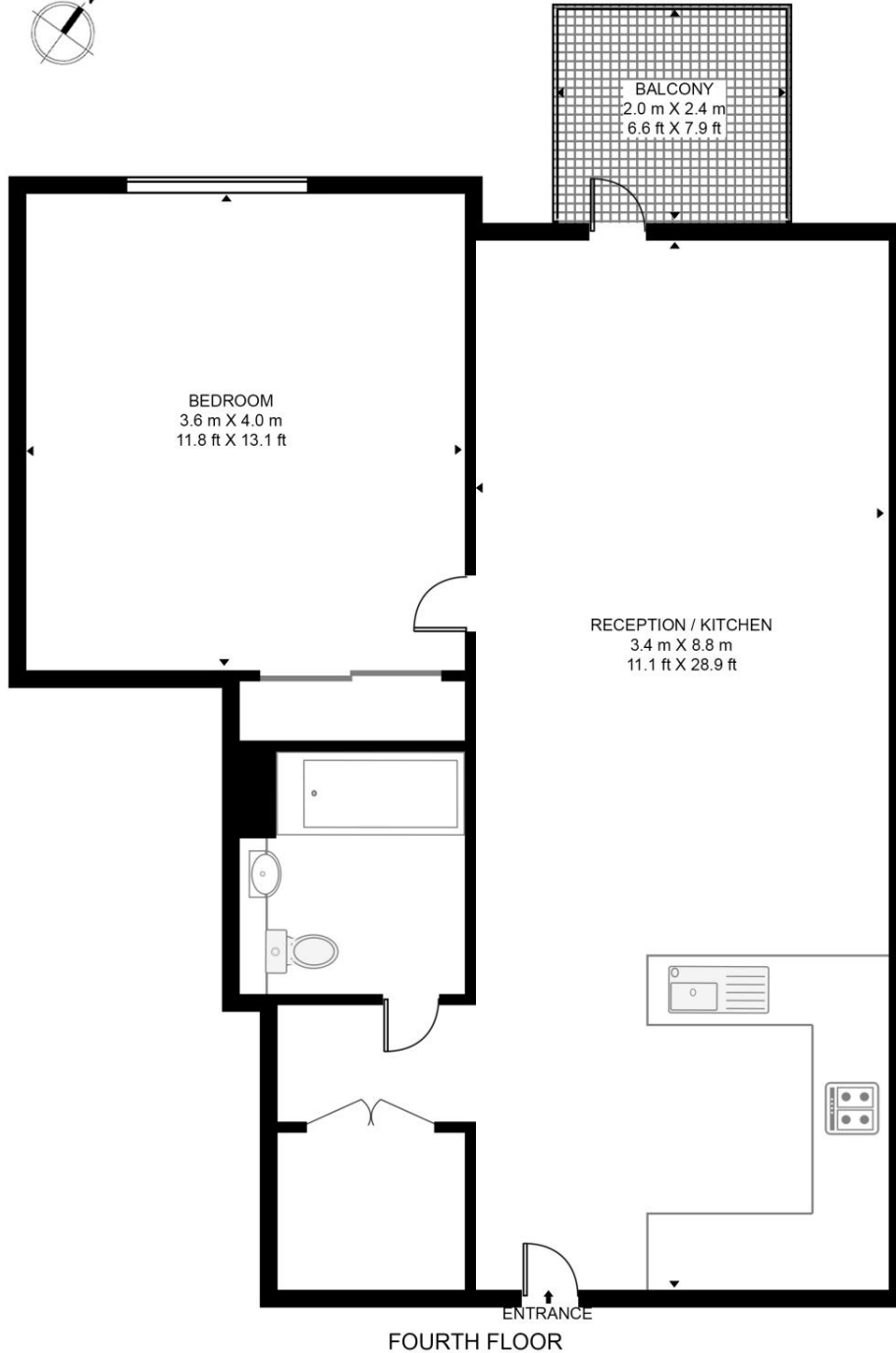
- 1 Bedroom
- 1 Bathroom
- 4th floor
- Large balcony
- On-site amenities including resident's gym
- 12 hour concierge
- 1.3 miles to Bermondsey Station
- Approx. 570 sq ft (53.0 sq m)
- Furnished
- EPC: B

Floorplan

570 sq ft | 53 sq m

THE TANNERY

APPROXIMATE GROSS INTERNAL FLOOR AREA 566 SQ.FT (52.6 SQ.M)



HDVA

This floor plan has been defined by the RICS Code of Measurement. This floor plan and all others are for approximate representative purposes only and upon usage is agreed to as such by the client.

WWW: hdvirtualart.com | TEL: 0203.974.1567 | EMAIL: info@hdvirtualart.com

City
25 Walbrook The Walbrook
Building,
London EC4N 8AF
+4420 7337 4000

Urban living, your way.

jll.co.uk/residential

© 2019 Jones Lang LaSalle IP, Inc. All rights reserved. All information contained herein is from sources deemed reliable; however, no representation or warranty is made to the accuracy thereof.

